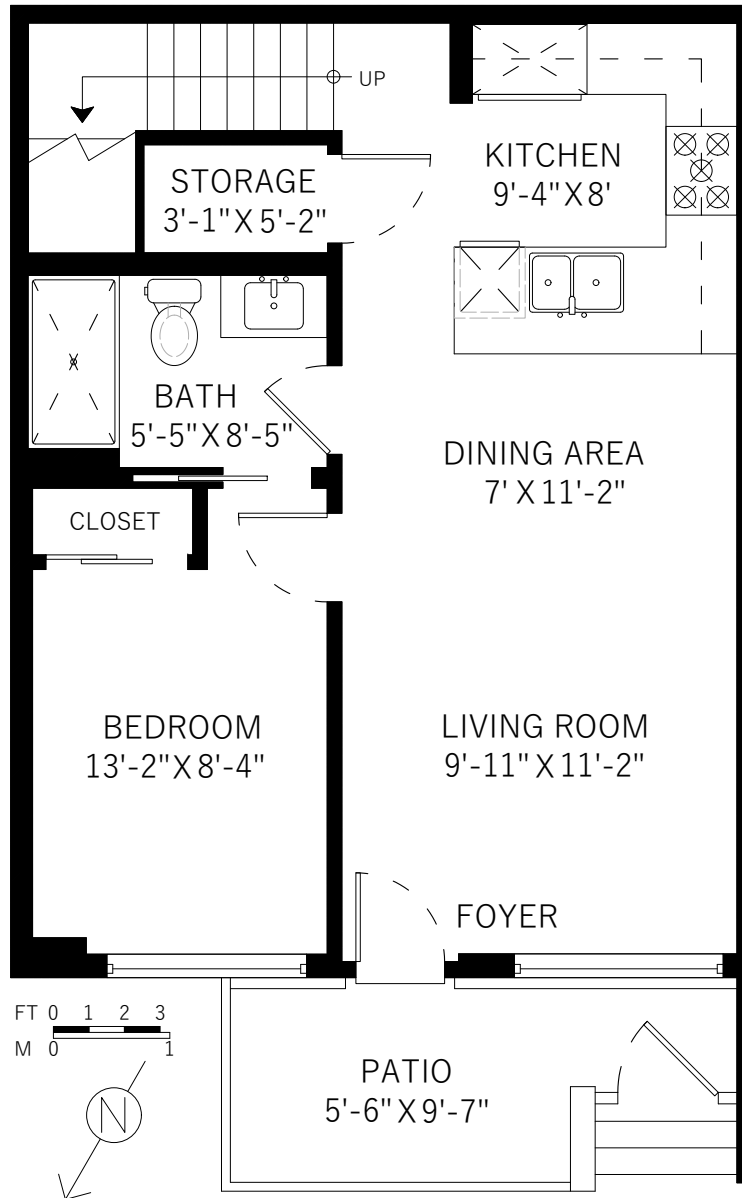


# 3570 Sawmill Crescent

Vancouver, BC

Main Floor	579 SQ.FT.
Upper Floor	633 SQ.FT.
<b>Total</b>	<b>1212 SQ.FT.</b>



Main Floor: 579 Sq.Ft.  
Ceiling Height: 7'-8" / Max: 9'



Upper Floor: 633 Sq.Ft.  
Ceiling Height: 8' / Max: 9'