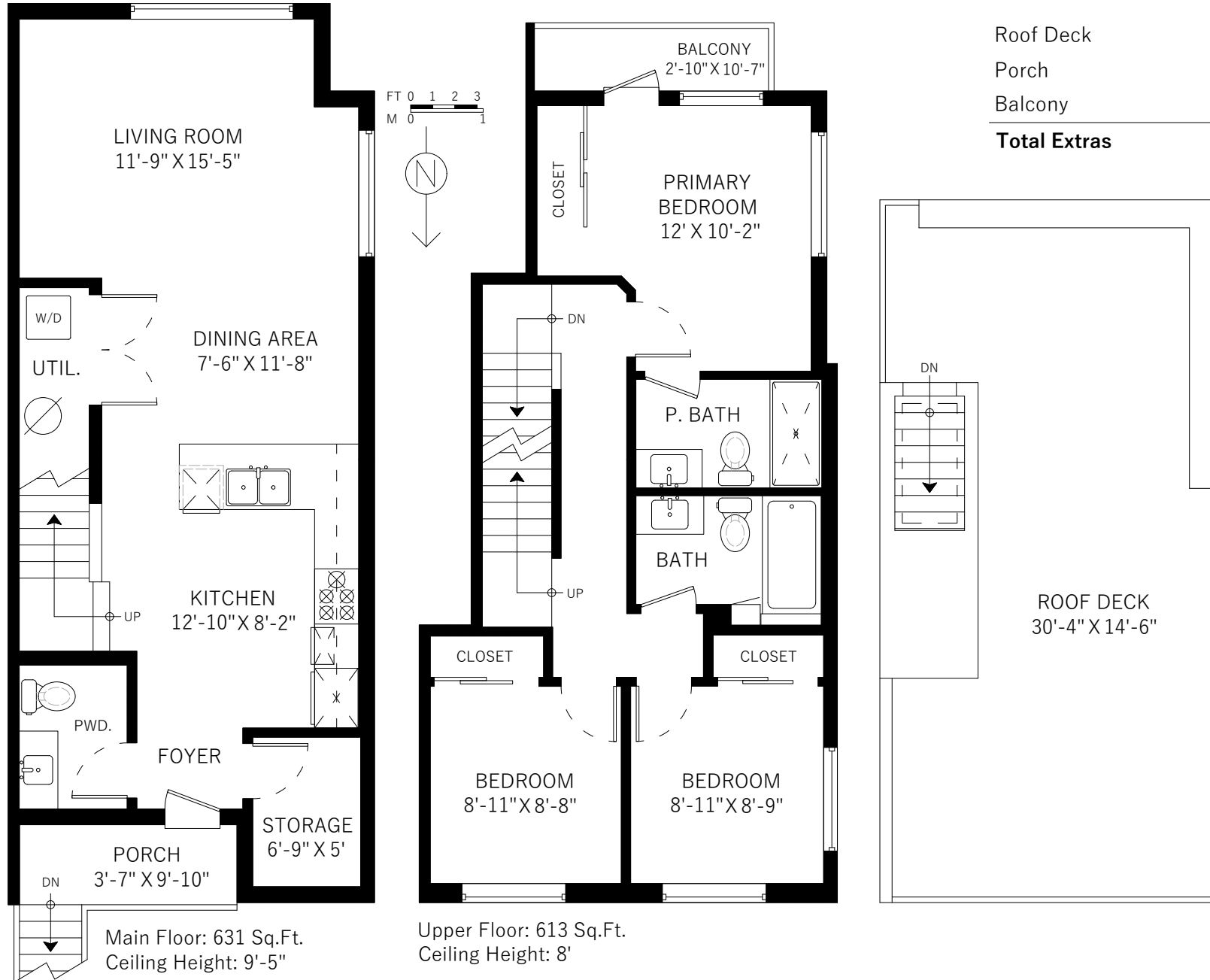


105-321 E 16th Avenue

Vancouver, BC

Main Floor	631 SQ.FT.
Upper Floor	613 SQ.FT.
Total	1244 SQ.FT.



Roof Deck	389 SQ.FT.
Porch	37 SQ.FT.
Balcony	34 SQ.FT.
Total Extras	460 SQ.FT.

Main Floor: 631 Sq.Ft.
Ceiling Height: 9'-5"

Upper Floor: 613 Sq.Ft.
Ceiling Height: 8'