



NICOLE JOHNSTON PREC\*

604.793.7686

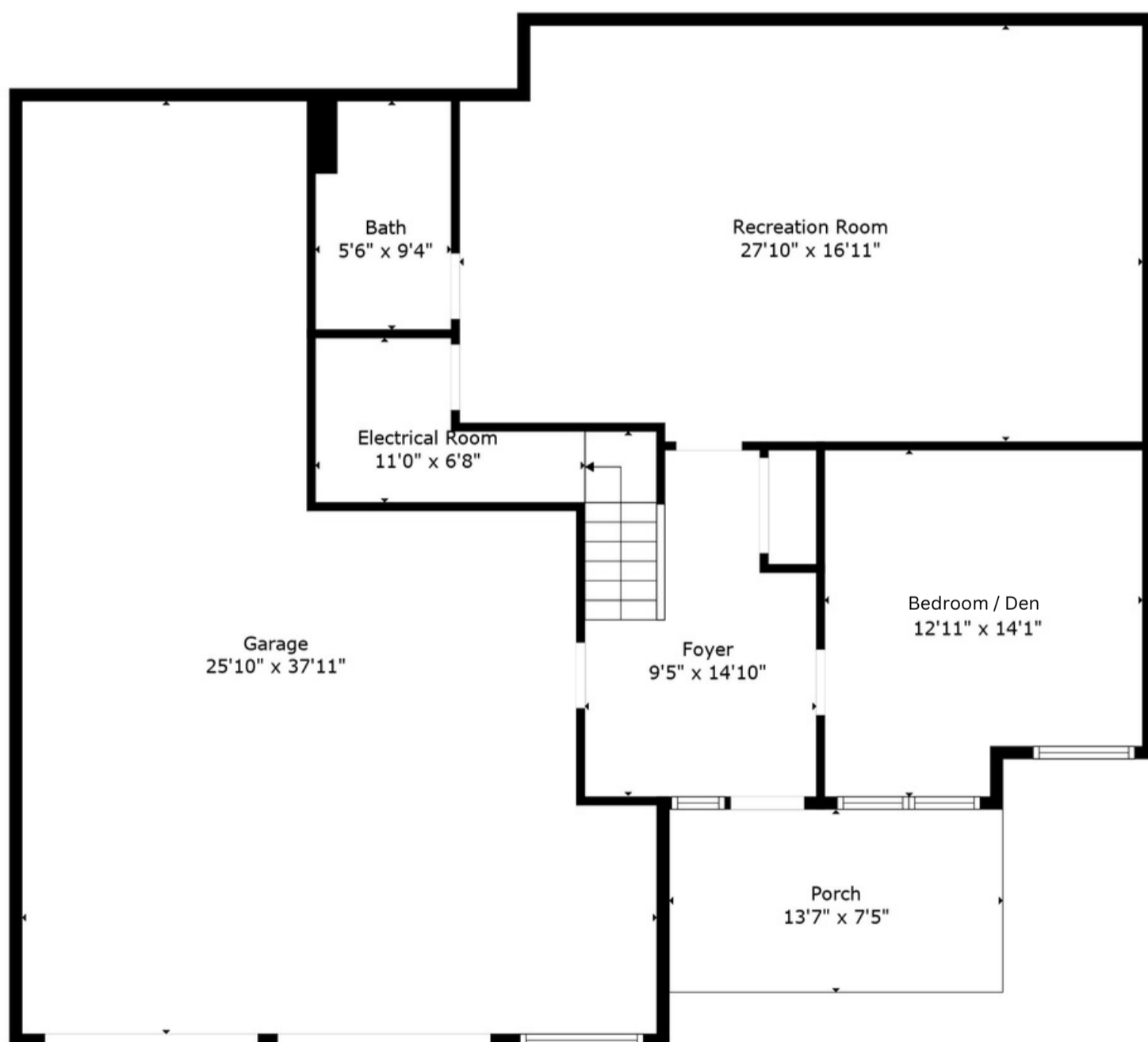
nicole.happyhomesbc@gmail.com

www.HomesInChilliwack.com

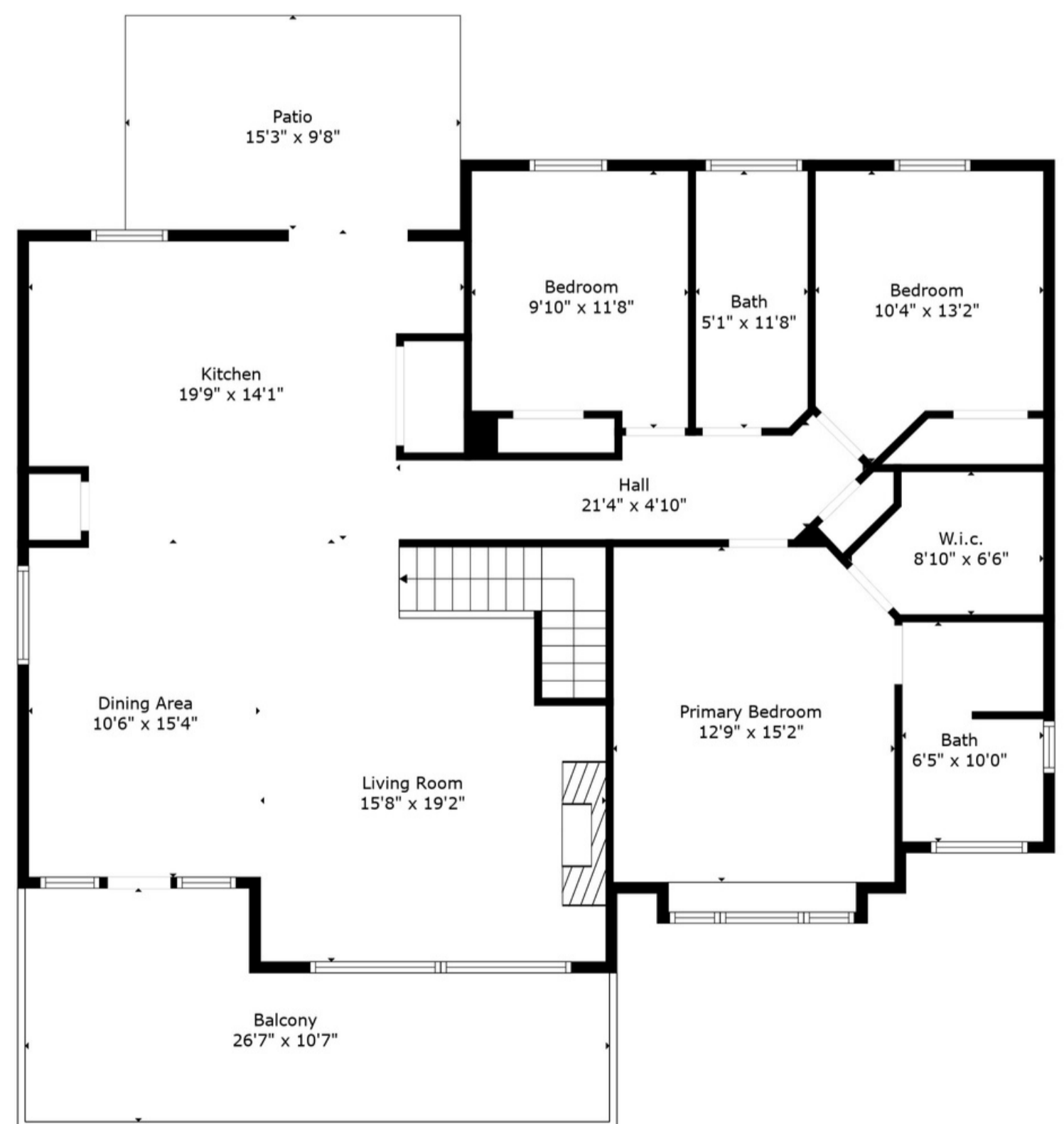
**45989 Weeden Drive  
Chilliwack, BC V2R 5X2**

Floor 1:	886 sq.ft.
Floor 2:	1480 sq.ft.
<b>Total Livable:</b>	<b>2366 sq.ft.</b>

Garage:	704 sq.ft.
Porch:	101 sq.ft.
Balcony:	219 sq.ft.
Patio:	148 sq.ft.
<b>Total Extras:</b>	<b>1172 sq.ft.</b>



Floor 1



Floor 2

E&O Insured. Total square foot calculated to gross unit area. SQFT based on interior measurements to exterior walls, not taken from original blueprints, may include unfinished area. This is for marketing purposes only and is not intended for architectural/construction use. All details, sizes & placements should be considered approximate within +/- 2% tolerance.