



Kelly & Nicole Johnston PREC*

604.793.7686

nicole.happyhomesbc@gmail.com

www.homesinchilliwack.com

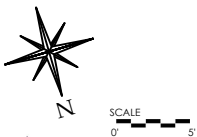
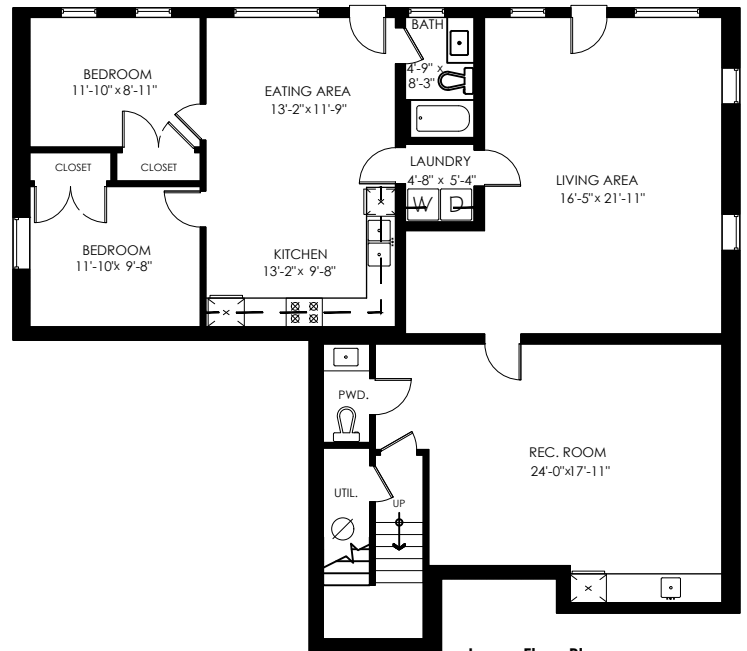
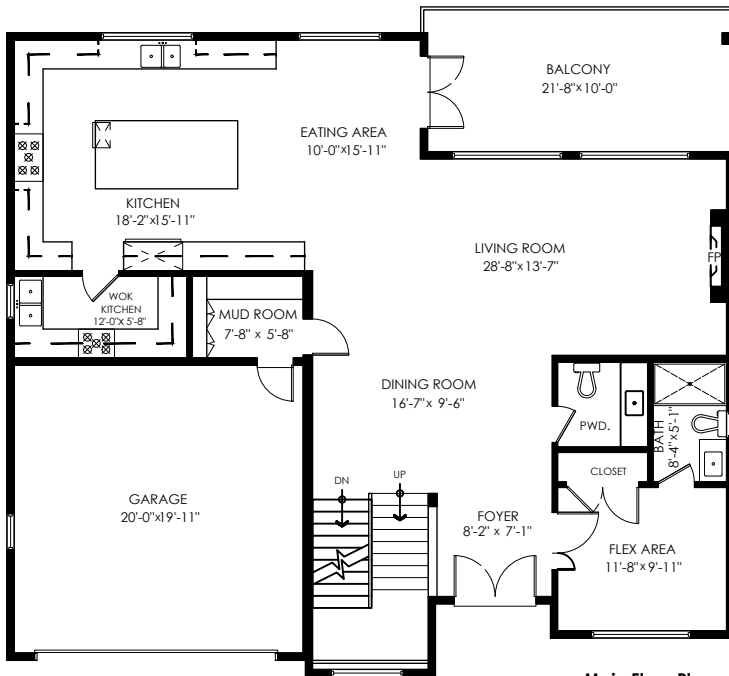
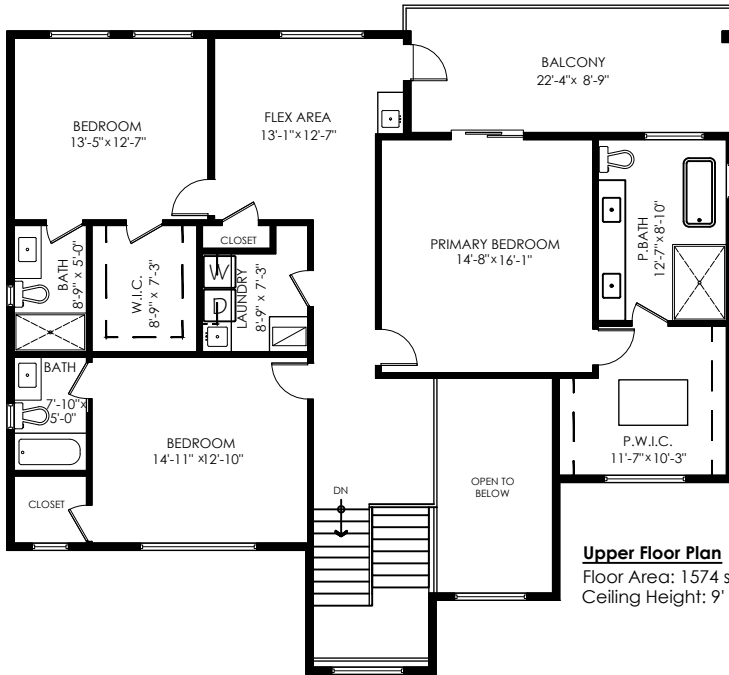
46110 Crestview Dr Chilliwack

Main Floor: 1,551 sq.ft.
 Upper Floor: 1,574 sq.ft.
 Lower Floor: 1,726 sq.ft.
Total Livable: 4,851 sq.ft.

Garage: 419 sq.ft.
Grand Total: 5,270 sq.ft.

Main Balcony: 213 sq.ft.
 Upper Balcony: 198 sq.ft.
Total Extras: 411 sq.ft.

Open To Below: 127 sq.ft.



E&O Insured. Total square foot calculated to gross unit area. SQFT based on interior measurements to exterior walls, not taken from original blueprints, may include unfinished area. This is for marketing purposes only and is not intended for architectural/construction use. All details, sizes & placements should be considered approximate within +/- 2% tolerance.

info@pixlworks.com www.pixlworks.com 604.329.5788



MEASURED ON: (2023-08-02)