



Kelly & Nicole Johnston PREC*
604.793.7686

nicole.happyhomesbc@gmail.com

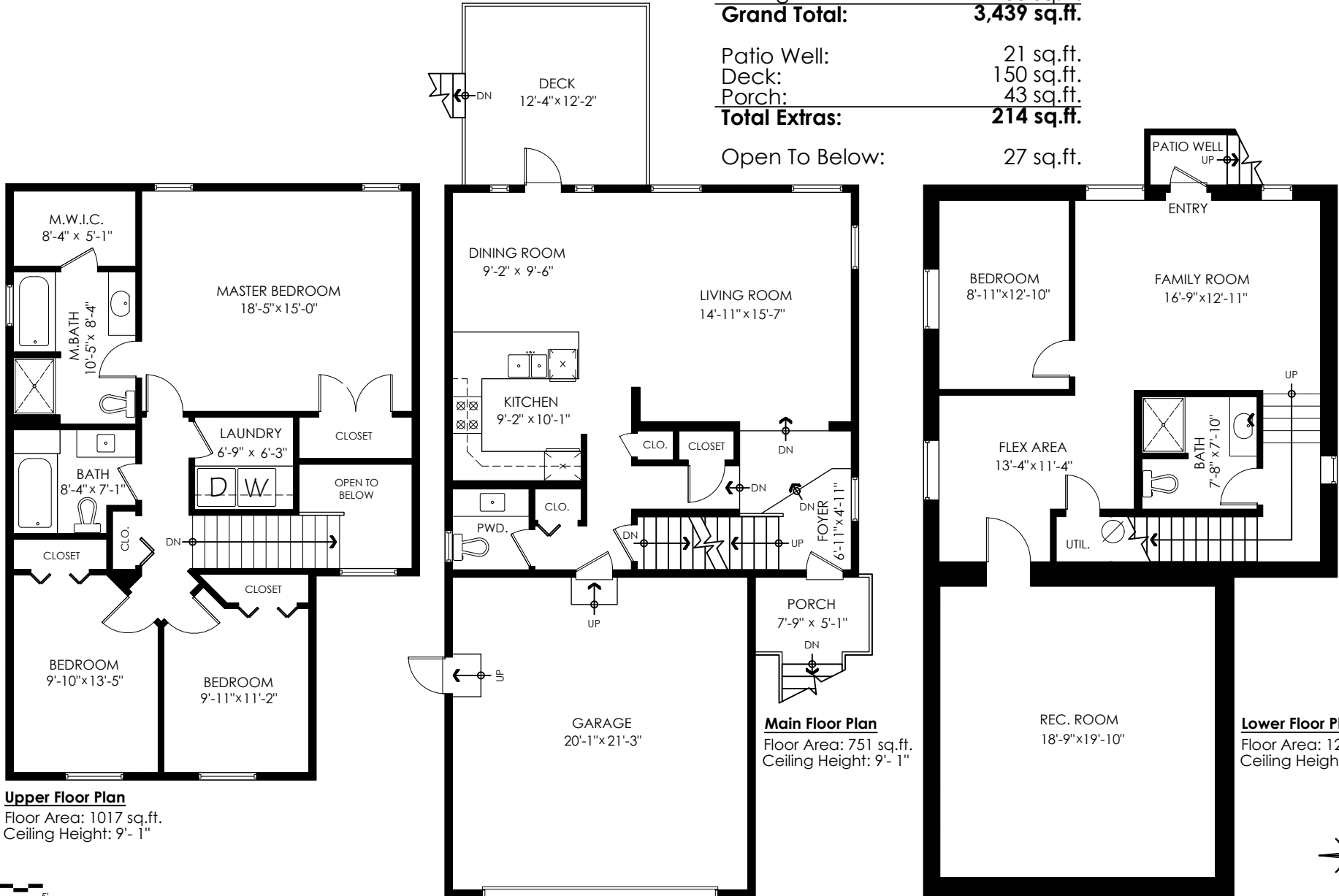
Main Floor: 751 sq.ft.
Upper Floor: 1,017 sq.ft.
Lower Floor: 1,211 sq.ft.
Total Livable: 2,979 sq.ft.

**19-5545 Peach Rd
Chilliwack**

Garage: 460 sq.ft.
Grand Total: 3,439 sq.ft.

Patio Well: 21 sq.ft.
Deck: 150 sq.ft.
Porch: 43 sq.ft.
Total Extras: 214 sq.ft.

Open To Below: 27 sq.ft.



Upper Floor Plan

Floor Area: 1017 sq.ft.
Ceiling Height: 9'- 1"

Main Floor Plan

Floor Area: 751 sq.ft.
Ceiling Height: 9'- 1"

Lower Floor Plan

Floor Area: 1211 sq.ft.
Ceiling Height: 9'- 6"



E&O Insured. Total square foot calculated to gross unit area. SQFT based on interior measurements to exterior walls, not taken from original blueprints, may include unfinished area. This is for marketing purposes only and is not intended for architectural/construction use. All details, sizes & placements should be considered approximate within +/- 2% tolerance.

info@pixlworks.com www.pixlworks.com 604.329.5788

MEASURED ON: (2022-09-06)

