

33-46485 Airport Rd Chilliwack

Floor Area: 1,579 sq.ft.

Garage: 372 sq.ft.

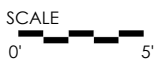
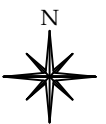
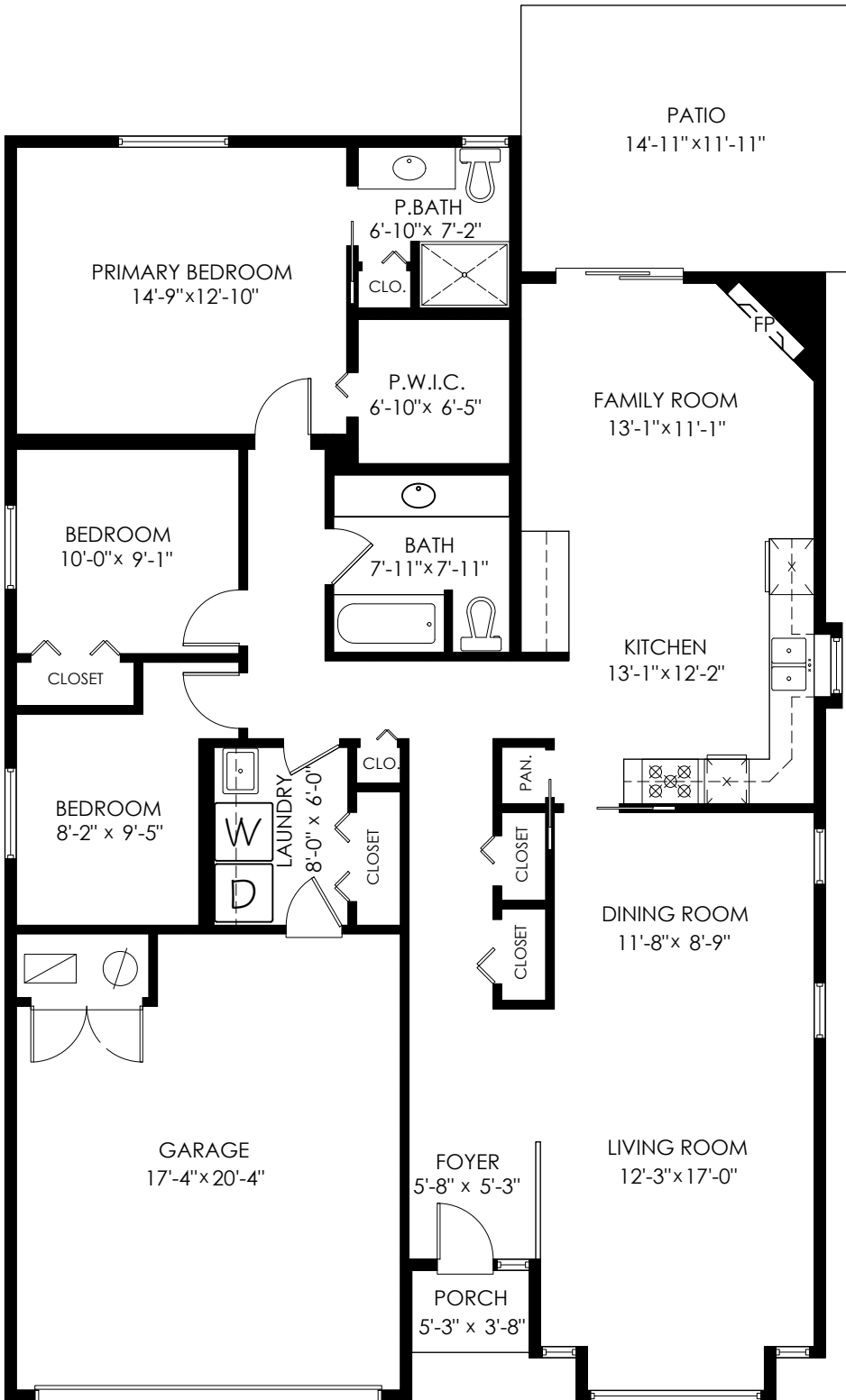
Grand Total: 1,951 sq.ft.

Patio: 178 sq.ft.

Porch: 19 sq.ft.

Total Extras: 197 sq.ft.

Ceiling Height: 8'-1"



MEASURED ON: (2023-02-23)

info@pixlworks.com www.pixlworks.com 604.329.5788



E&O Insured. Total square foot calculated to gross unit area. SQFT based on interior measurements to exterior walls, not taken from original blueprints, may include unfinished area. This is for marketing purposes only and is not intended for architectural/construction use. All details, sizes & placements should be considered approximate within +/- 2% tolerance.