



Nicole Johnston PREC\*

604.793.7686

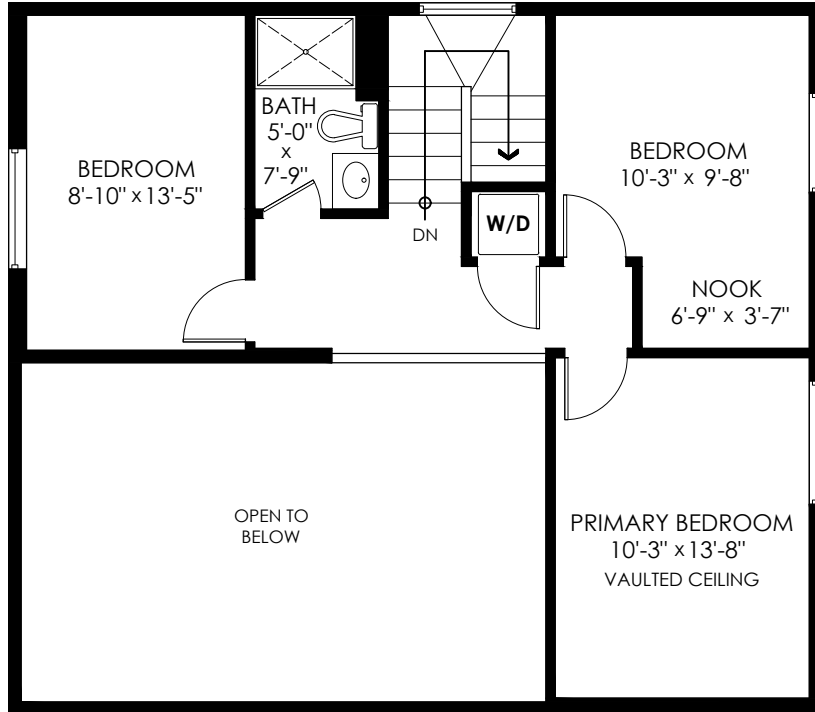
nicole.happyhomesbc@gmail.com

# 172 Towers Rd Manning Park

Main Floor:	934 sq.ft.
Upper Floor:	629 sq.ft.
<b>Total Livable:</b>	<b>1,563 sq.ft.</b>

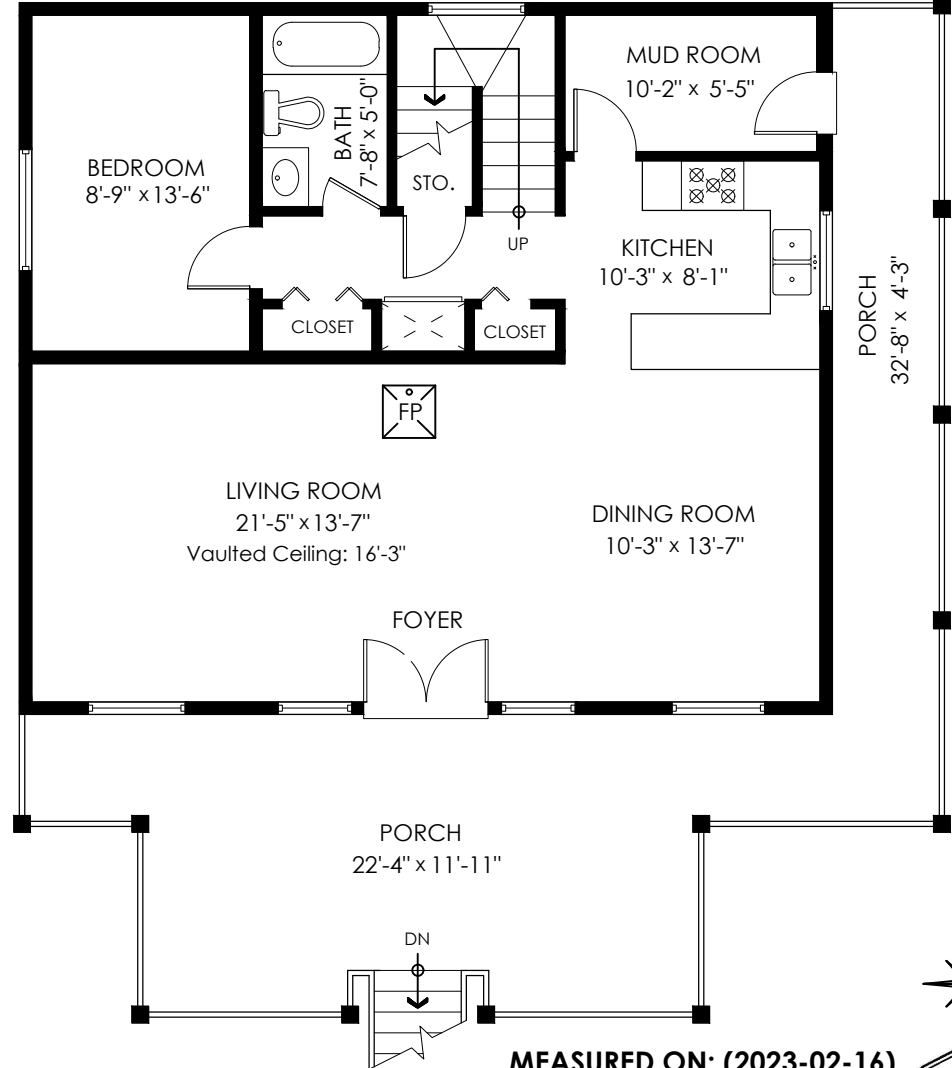
## Upper Floor Plan

Floor Area: 629 sq.ft.  
Ceiling Height: 7'-6"



## Main Floor Plan

Floor Area: 934 sq.ft.  
Ceiling Height: 8'-0"



Porch:	441 sq.ft.
Open To Below:	305 sq.ft.



E&O Insured. Total square foot calculated to gross unit area. SQFT based on interior measurements to exterior walls, not taken from original blueprints, may include unfinished area. This is for marketing purposes only and is not intended for architectural/construction use. All details, sizes & placements should be considered approximate within +/- 2% tolerance.

MEASURED ON: (2023-02-16)  
info@pixlworks.com www.pixlworks.com 604.329.5788

