



Kelly & Nicole Johnston PREC\*

604.793.7686

nicole.happyhomesbc@gmail.com

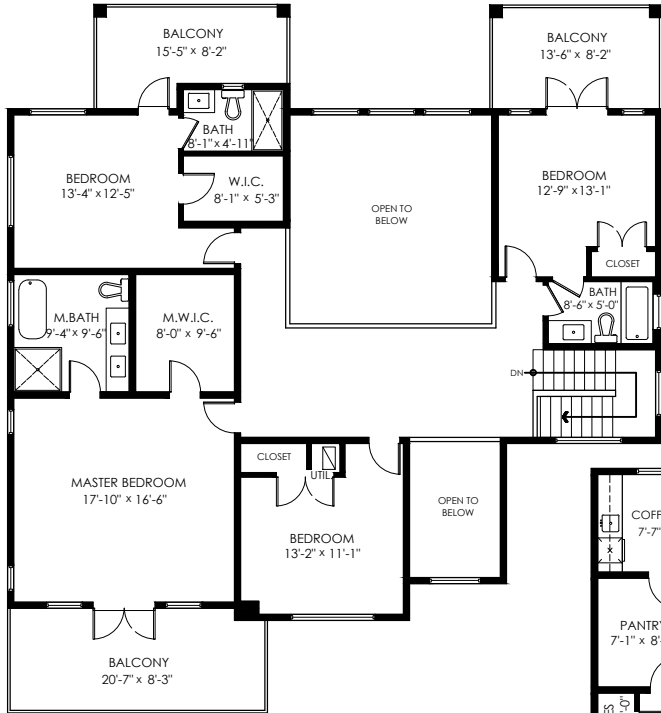
# 5638 Crimson Ridge Chilliwack

Main Floor:	1,855 sq.ft.
Upper Floor:	1,613 sq.ft.
Lower Floor:	1,855 sq.ft.
<b>Total Livable:</b>	<b>5,323 sq.ft.</b>

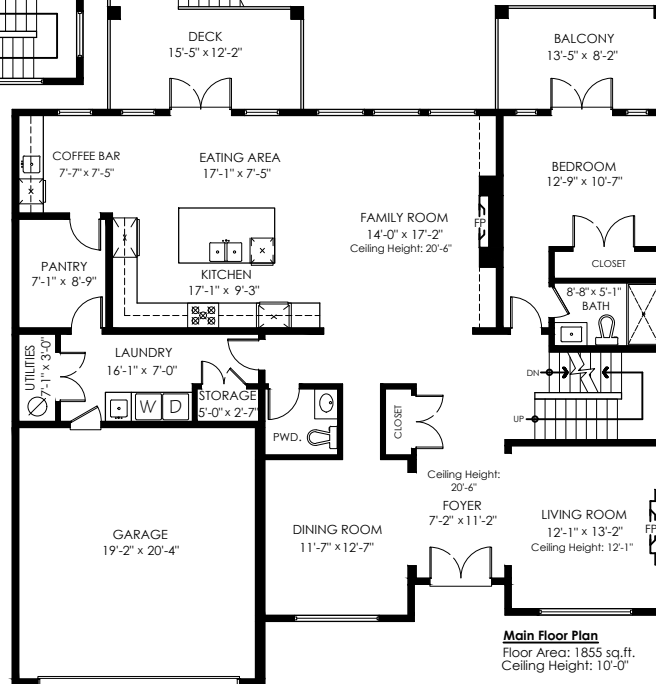
Garage:	414 sq.ft.
<b>Grand Total:</b>	<b>5,737 sq.ft.</b>

Patio:	479 sq.ft.
Deck:	146 sq.ft.
Balconies:	491 sq.ft.
<b>Total Extras:</b>	<b>1,116 sq.ft.</b>

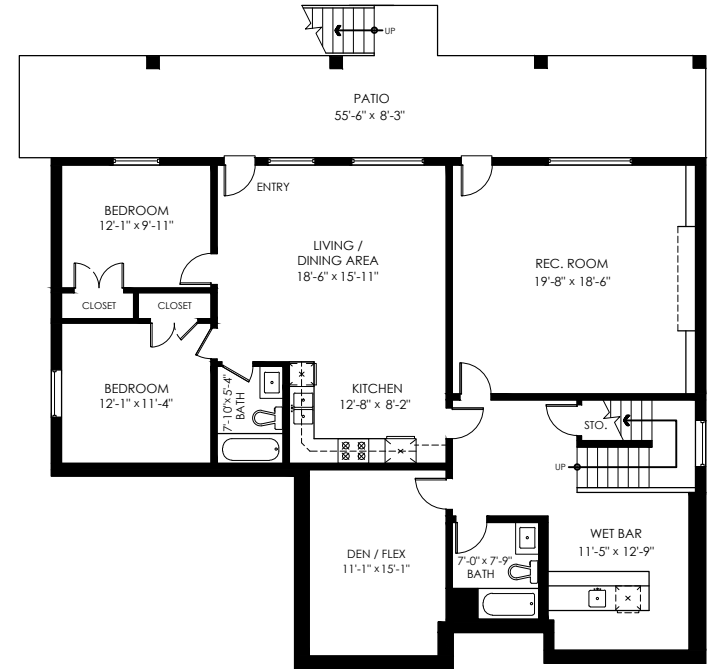
Open To Below:	374 sq.ft.
----------------	------------



**Upper Floor Plan**  
Floor Area: 1613 sq.ft.  
Ceiling Height: 9'-1"



**Main Floor Plan**  
Floor Area: 1855 sq.ft.  
Ceiling Height: 10'-0"



**Lower Floor Plan**  
Floor Area: 1855 sq.ft.  
Ceiling Height: 9'-0"



E&O Insured. Total square foot calculated to gross unit area. SQFT based on interior measurements to exterior walls, not taken from original blueprints, may include unfinished area. This is for marketing purposes only and is not intended for architectural/construction use. All details, sizes & placements should be considered approximate within +/- 2% tolerance.

info@pixlworks.com www.pixlworks.com 604.329.5788

MEASURED ON: (2022-10-31)

