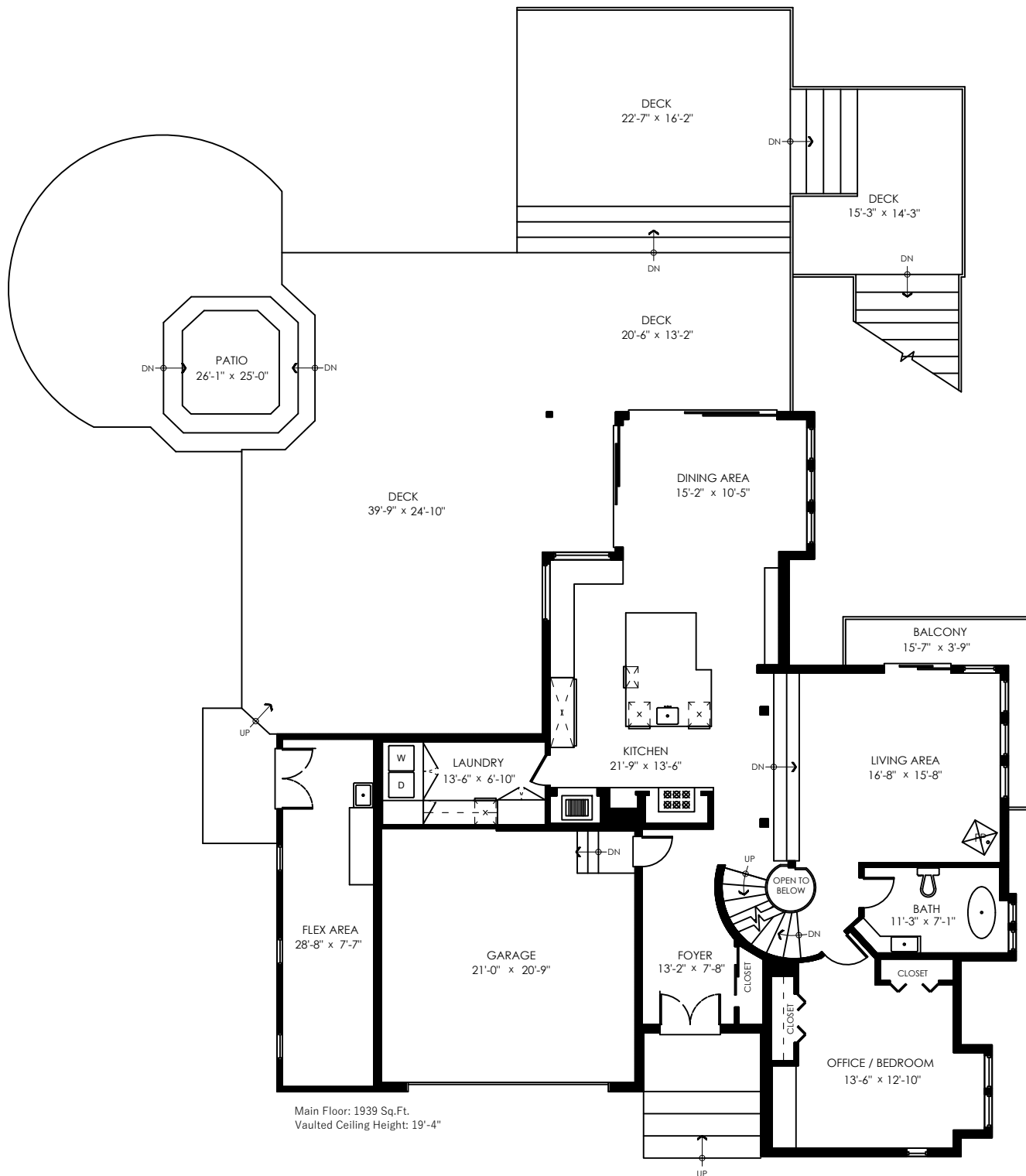


2889 Allan Rd.
North Vancouver, BC



Main Floor 1939 SQ.FT.

Total 1939 SQ.FT.

Patio 523 SQ.FT.

Deck 1990 SQ.FT.

Balcony 92 SQ.FT.

Garage 456 SQ.FT.

Total Extras 3061 SQ.FT.

Open To Below 12 SQ.FT.

Main Floor: 1939 Sq.Ft.
Vaulted Ceiling Height: 19'-4"

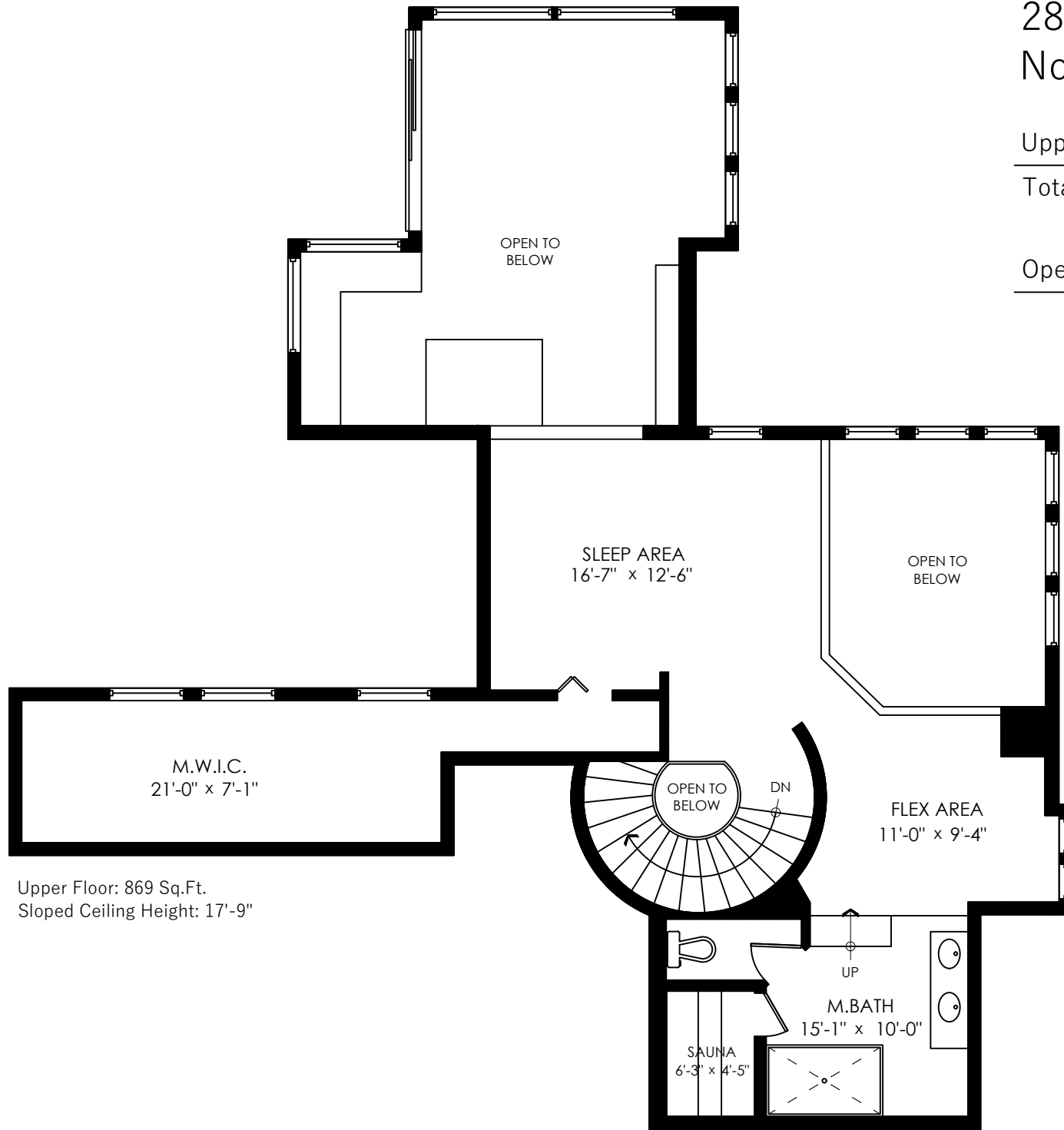


2889 Allan Rd.
North Vancouver, BC

Upper Floor 869 SQ.FT.

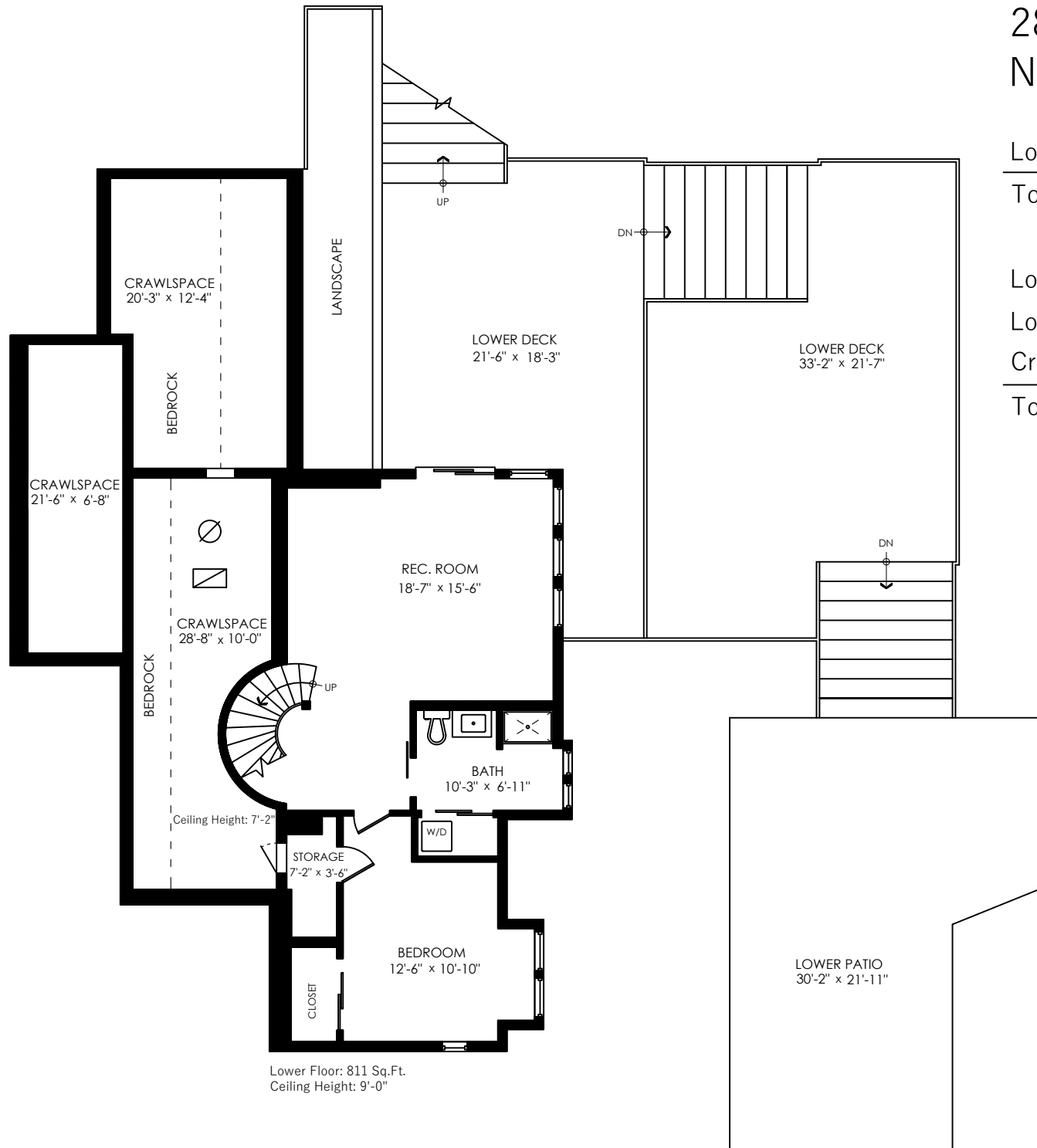
Total 869 SQ.FT.

Open To Below 558 SQ.FT.



Upper Floor: 869 Sq.Ft.
Sloped Ceiling Height: 17'-9"

2889 Allan Rd.
North Vancouver, BC



Lower Floor: 811 Sq.Ft.
Ceiling Height: 9'-0"

Lower Floor 811 SQ.FT.

Total 811 SQ.FT.

Lower Patio 553 SQ.FT.

Lower Deck 1129 SQ.FT.

CrawlSpace 755 SQ.FT.

Total Extras 2437 SQ.FT.

