

FLOOR PLAN

2412 CARMARIA COURT, NORTH VANCOUVER

MAIN: 1,043 sq ft
UPPER: 1,163 sq ft
LOWER: 1,005 sq ft
TOTAL 3,211 sq ft



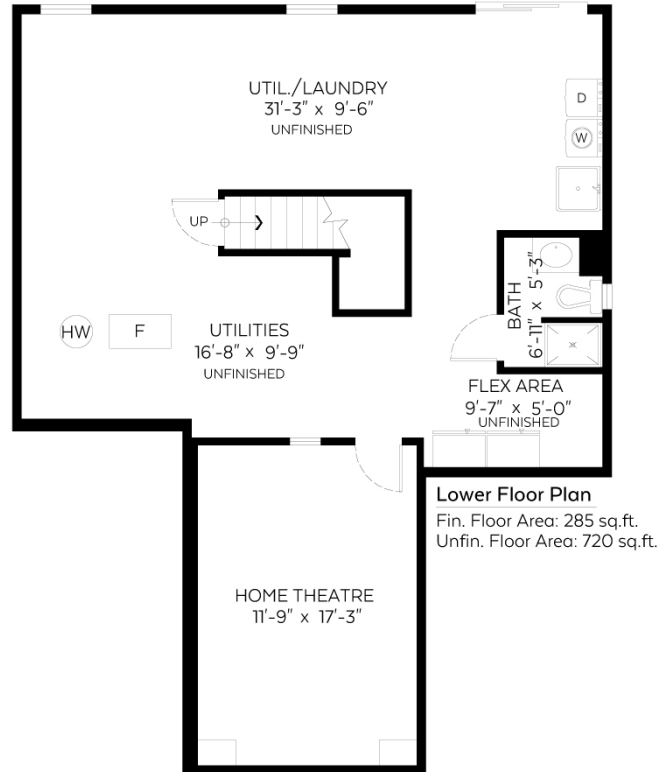
brandon.

brandon crichton | 778.847.2453 | agentbrandon.com



VPG REALTY

VPG REALTY INC. | 159-1233 Lynn Valley Road



Main Floor:	1,043 sq.ft.
Upper Floor:	1,163 sq.ft.
Fin. Lower Floor:	285 sq.ft.

Total: 2,491 sq.ft.

Unfin. Lower Floor: 720 sq.ft.

Grand Total: 3,211 sq.ft.

Open To Below: 156 sq.ft.

Auxiliary Area

Garage: 405 sq.ft.

Balconies: 240 sq.ft.



Measured on: Sept. 5, 2018

The floor plan is not suitable for architectural/construction and is covered under E&O. © Excelsior Measuring Inc. 2018. All rights reserved for Excelsior Measuring Inc. Users shall not publish and distribute such material (in whole or in part) and/or incorporate it in other works in any form.



NORTH

Pixilink
 SOLUTIONS
 604-639-5434
 WWW.PIXILINK.COM

brandon.

brandon crichton | 778.847.2453 | agentbrandon.com



VPG REALTY

VPG REALTY INC. | 159-1233 Lynn Valley Road