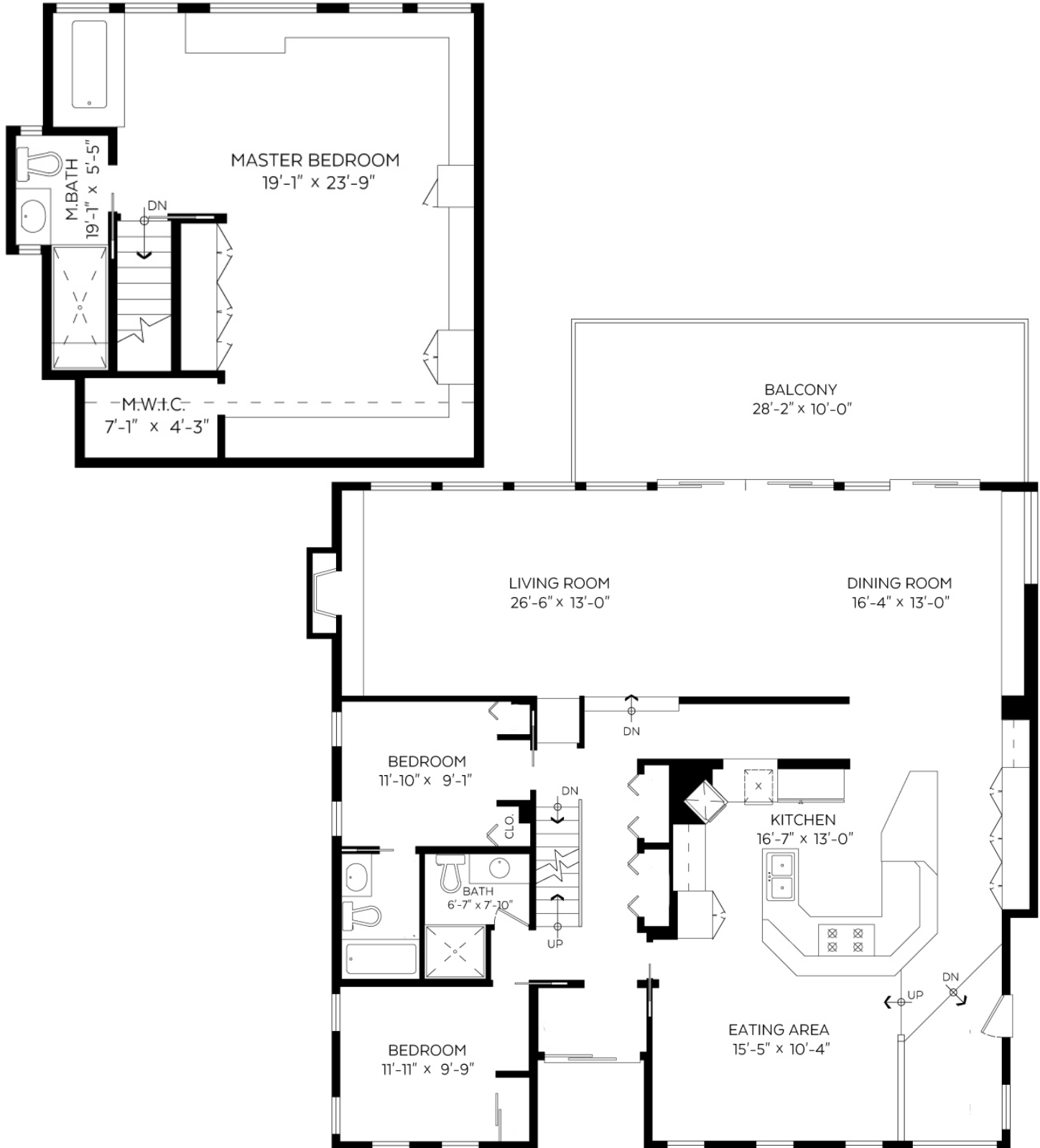


FLOOR PLAN

329 CARTELIER ROAD, NORTH VANCOUVER

LOWER FLOOR: 1,393 sq. ft
MAIN FLOOR: 1,790 sq. ft
MASTER UPPER: 512 sq. ft



Measured on: August 2, 2017

The floor plan is not suitable for architectural/construction and is covered under E&O. © Excelsior Measuring Inc. 2017. All rights reserved for Excelsior Measuring Inc. Users shall not publish and distribute such material (in whole or in part) and/or incorporate it in other works in any form.



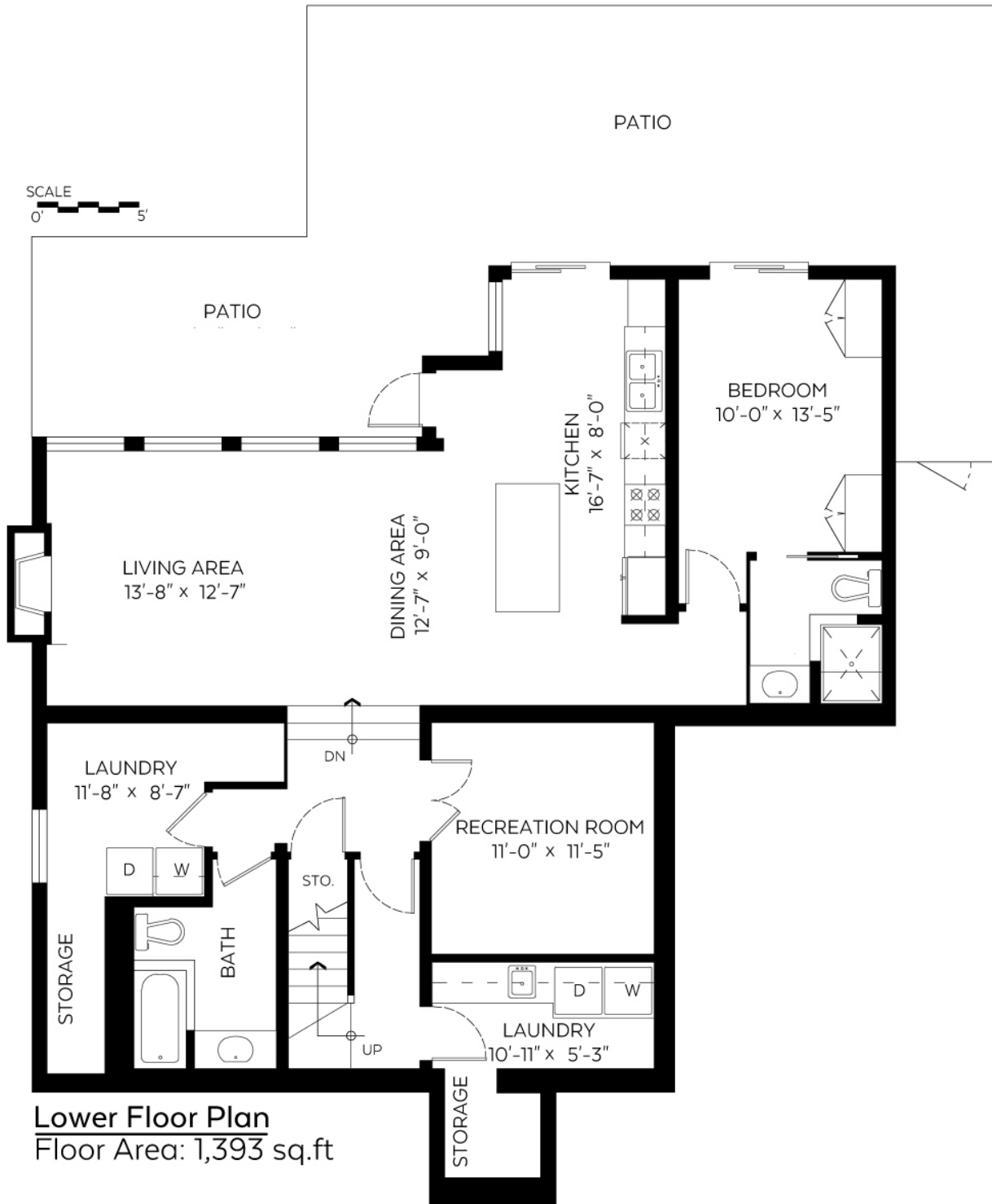
NORTH

Pixilink
SOLUTIONS
604-639-5434
WWW.PIXILINK.COM

FLOOR PLAN

329 CARTELIER ROAD, NORTH VANCOUVER

LOWER FLOOR: 1,393 sq. ft
MAIN FLOOR: 1,790 sq. ft
MASTER UPPER: 512 sq. ft



Measured on: August 2, 2017

The floor plan is not suitable for architectural/construction and is covered under E&O. © Excelsior Measuring Inc. 2017. All rights reserved for Excelsior Measuring Inc. Users shall not publish and distribute such material (in whole or in part) and/or incorporate it in other works in any form.



NORTH

Pixilink
SOLUTIONS
604-639-5434
WWW.PIXILINK.COM