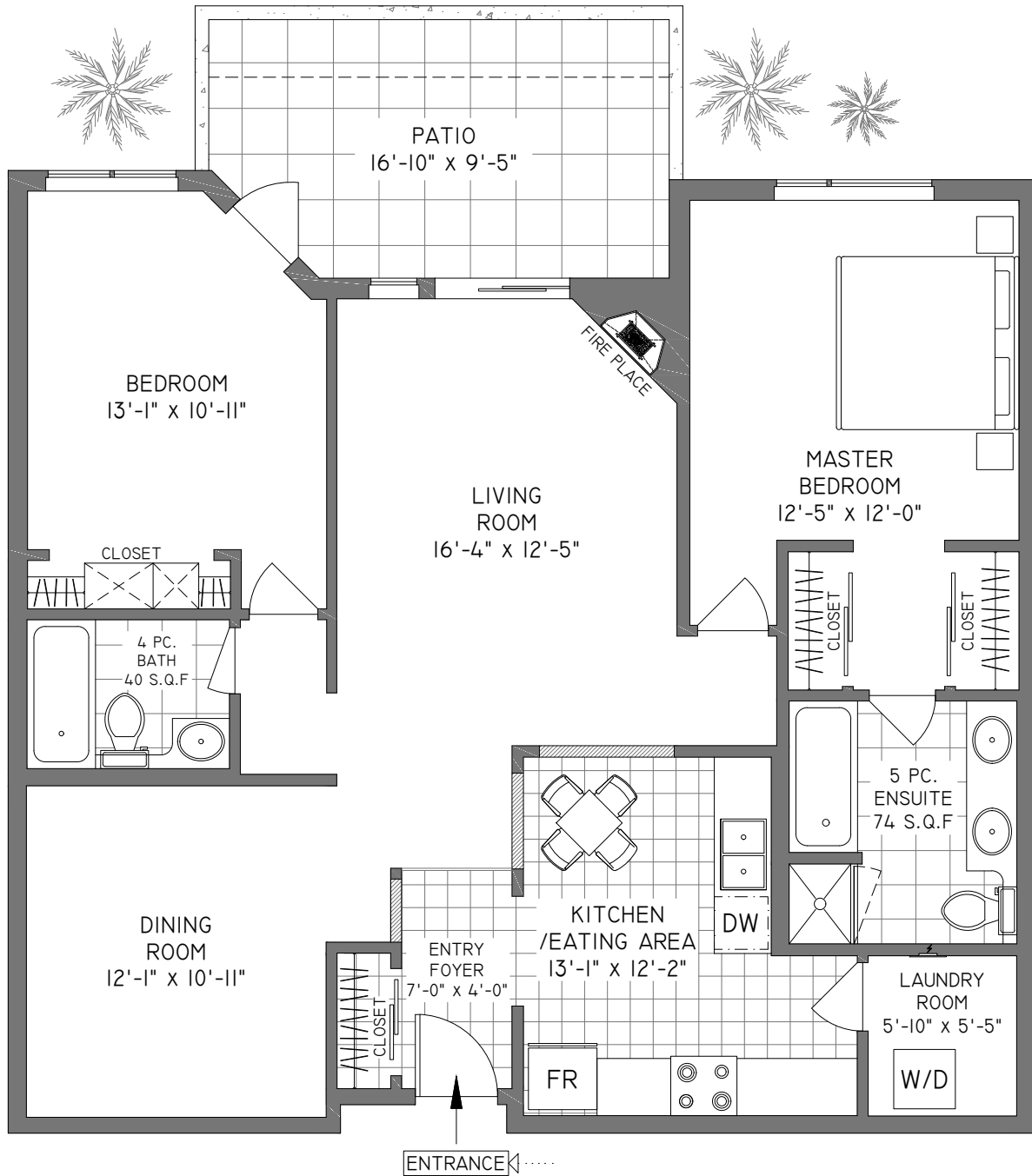




#104 - 1281 PARKGATE AVENUE NORTH VANCOUVER

1224 SQ. FT.

8'-0" CEILING HEIGHT



Booked on
the Pixilink App™



FLOOR	AREA (SQ. FT.)	
	FINISHED	PATIO
FIRST	1224	150

THE REPRESENTED FLOOR PLANS ARE NOT SUITABLE FOR CONSTRUCTION/ARCHITECTURAL PURPOSES. EVERY EFFORT HAS BEEN MADE TO REPRESENT ALL DIMENSION ACCURATELY. E&O INSURED. FINAL SQUARE FOOTAGE MAY BE OBTAINED FROM STRATA PLAN.