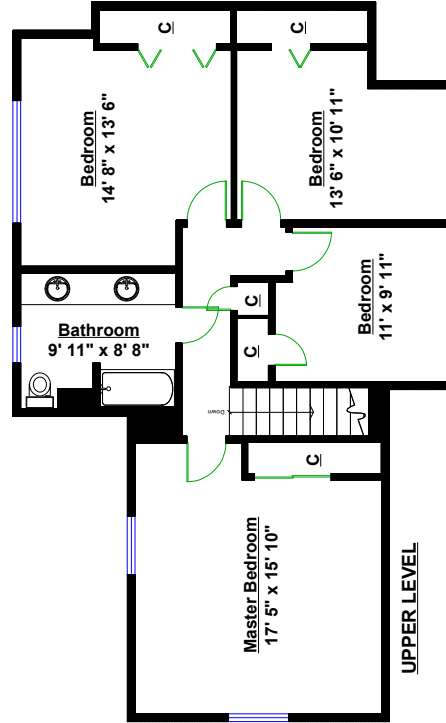
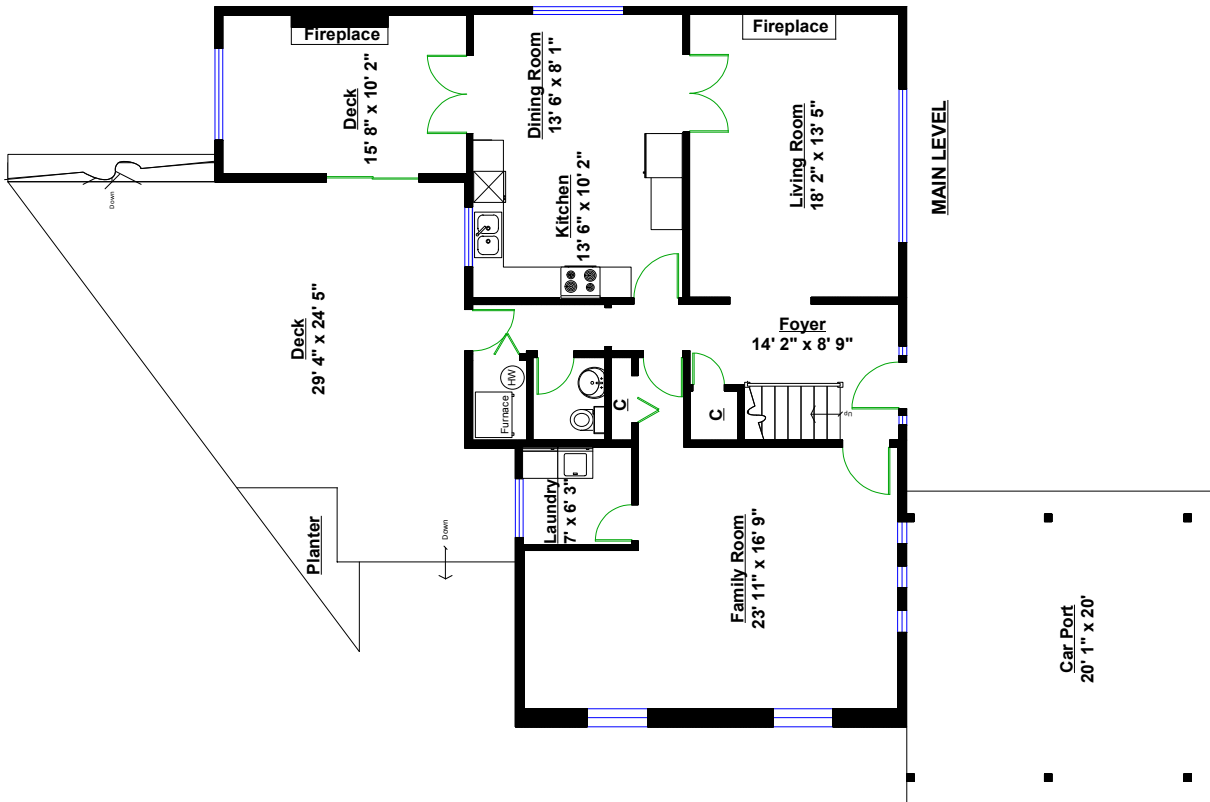


# 992 Canyon Boulevard, North Vancouver

<b>Totals**</b>			
Main Level		Other Areas	401 sq. ft.
Floor:	1,315 sq. ft.	Car Port:	493 sq. ft.
Exterior Wall:	115 sq. ft.	Deck:	894 sq. ft.
<b>TOTAL:</b>	<b>1,430 sq. ft.</b>	<b>TOTAL:</b>	<b>894 sq. ft.</b>
Upper Level			
Floor:	964 sq. ft.		
Exterior Walls:	75 sq. ft.		
<b>TOTAL:</b>	<b>1,039 sq. ft.</b>		
<b>GRAND TOTAL:</b>	<b>2,469 sq. ft.</b>		



**Pixilink**  
SOLUTIONS

\*\* Approx. based on interior measurements to exterior walls  
\*\* Total square footage not taken from original blueprints



**BC**  
FLOOR PLANS