



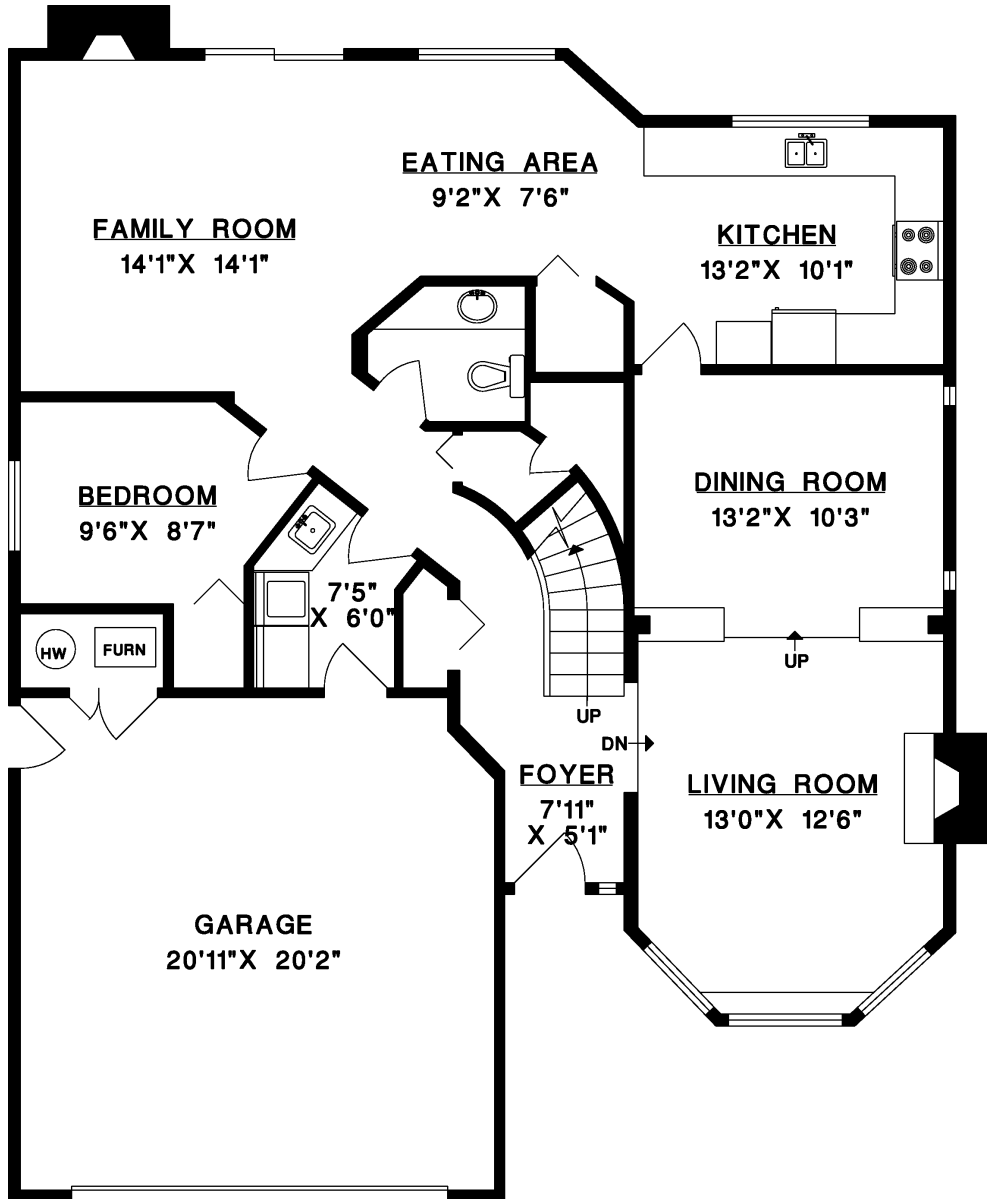
INA ERVIN

778.863.2552

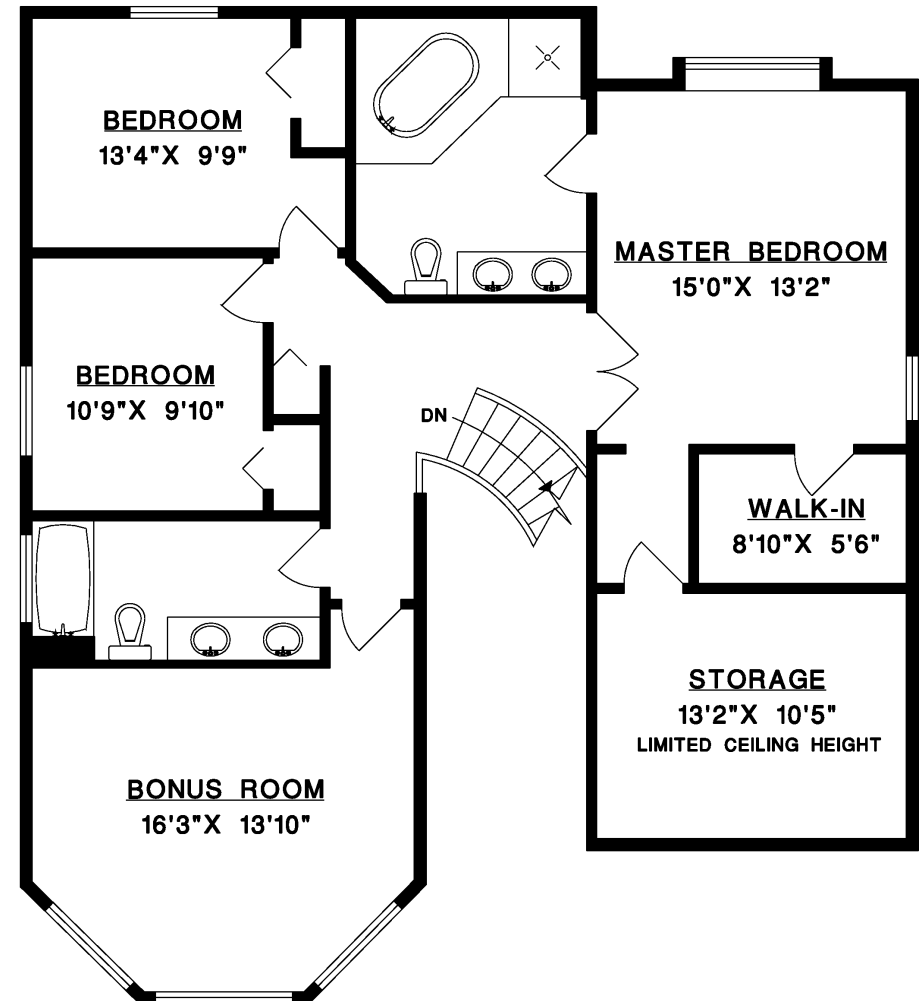
**COLDWELL
BANKER**
PRESTIGE REALTY
INAERVIN.COM

**3838 MOUNT SEYMOUR PARKWAY
NORTH VANCOUVER**

MAIN FLOOR	1,275 SQ.FT.
UPPER FLOOR	1,235 SQ.FT.
TOTAL	2,510 SQ.FT.
GARAGE	467 SQ.FT.



MAIN FLOOR



UPPER FLOOR



SCALE