



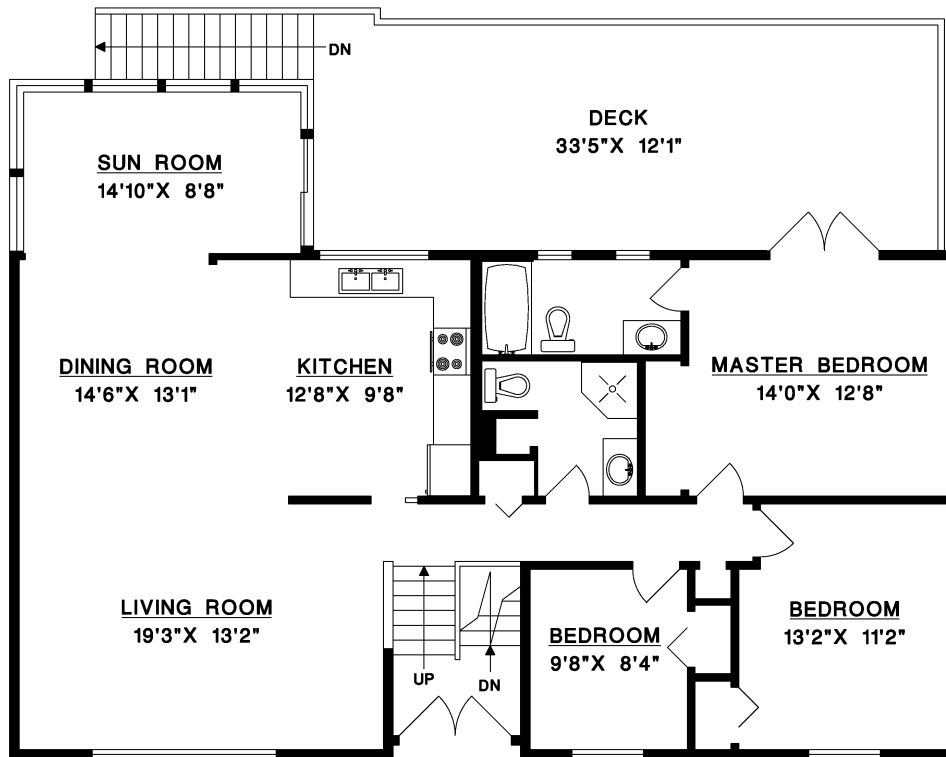
INA ERVIN

778.863.2552

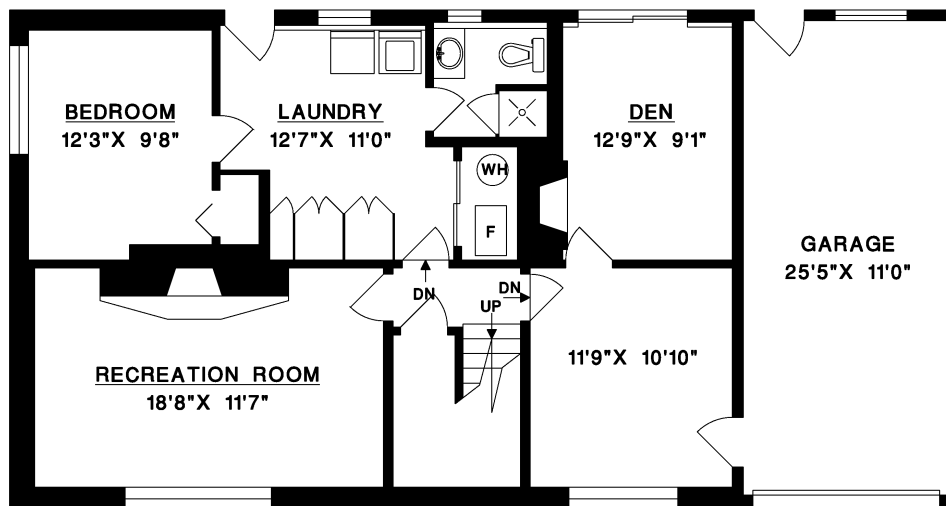
COLDWELL BANKER PRESTIGE REALTY INAERVIN.COM

2465 BIRNEY PLACE NORTH VANCOUVER

MAIN FLOOR	1,525 SQ.FT.
LOWER FLOOR	1,015 SQ.FT.
TOTAL	2,540 SQ.FT.
GARAGE	307 SQ.FT.
DECK	422 SQ.FT.



MAIN FLOOR



LOWER FLOOR

