

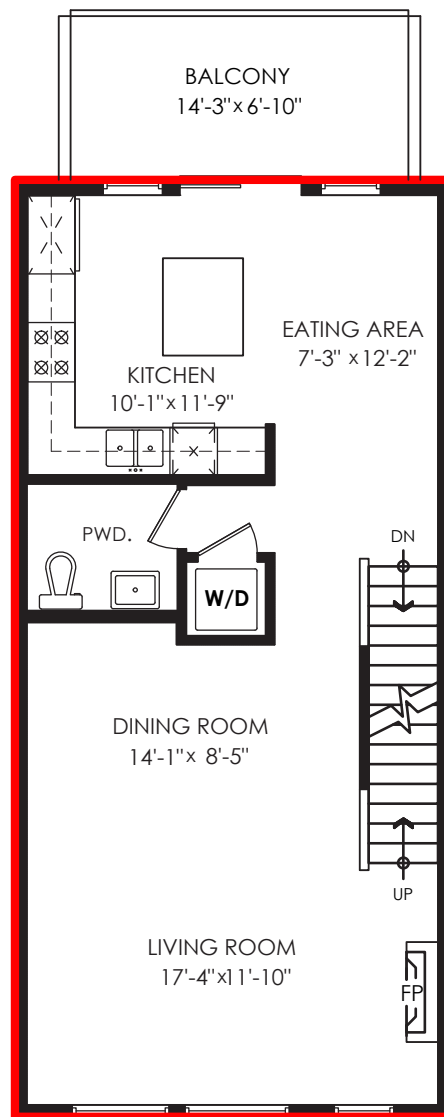
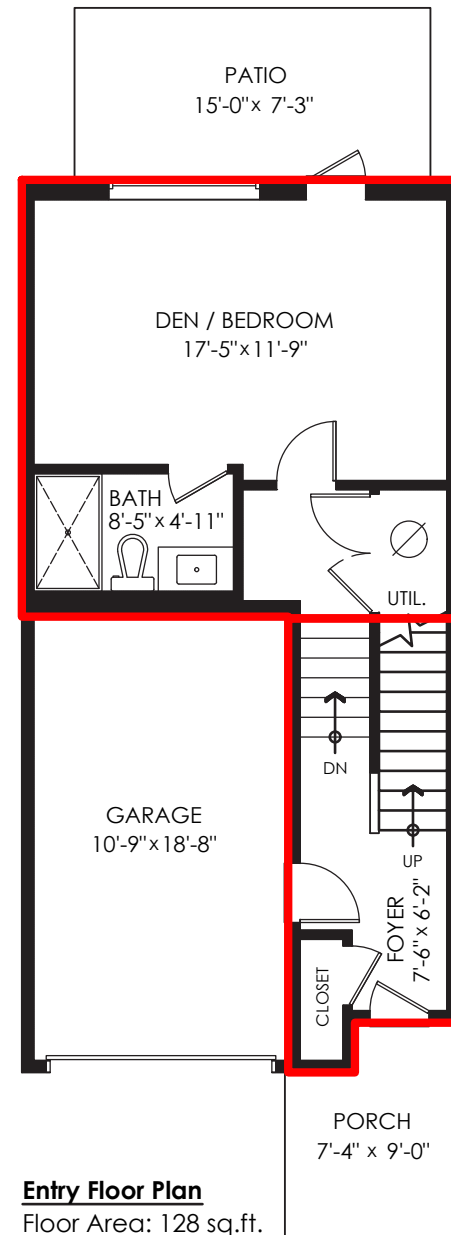
# 120 - 1480 SOUTHVIEW STREET, COQUITLAM

Main Floor: 724 sq.ft.  
 Upper Floor: 753 sq.ft.  
 Entry Floor: 128 sq.ft.  
 Lower Floor: 340 sq.ft.  
**Total: 1,945 sq.ft.**

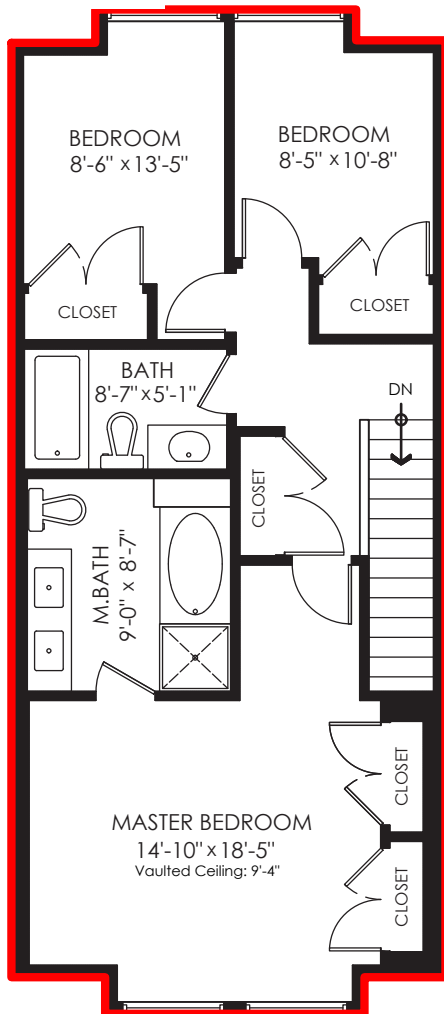
Garage: 215 sq.ft.  
 Patio: 109 sq.ft.  
 Balcony: 98 sq.ft.  
 Porch: 60 sq.ft.  
**Total Extras: 482 sq.ft.**

## 120-1480 Southview Street, Coquitlam

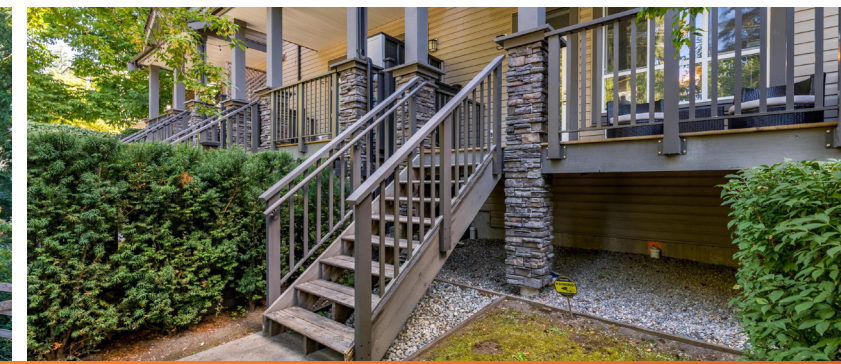
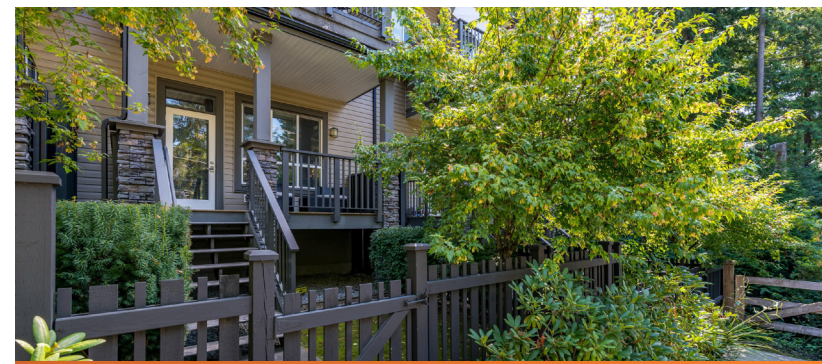
**Lower Floor Plan**  
 Floor Area: 340 sq.ft.  
 Ceiling Height: 12'-6"



**Main Floor Plan**  
 Floor Area: 724 sq.ft.  
 Ceiling Height: 9'-0"



**Upper Floor Plan**  
 Floor Area: 753 sq.ft.  
 Ceiling Height: 8'-0"



**This Home includes a 12 month satisfaction guarantee if you buy from me. Ask for details!**

The enclosed information while deemed to be correct, is not guaranteed.  
 This communication is not intended to solicit properties already listed for sale.

Produced and printed by **cotala** [www.cotala.com](http://www.cotala.com)

604-813-5130 | [barry@connerty.ca](mailto:barry@connerty.ca) | [www.connerty.ca](http://www.connerty.ca)





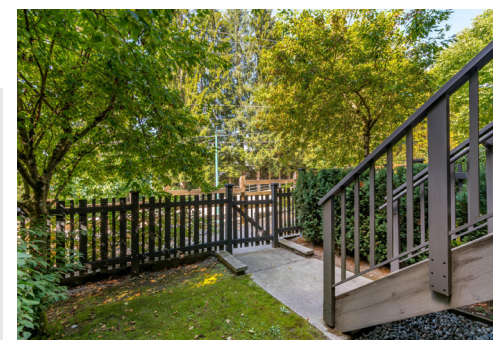
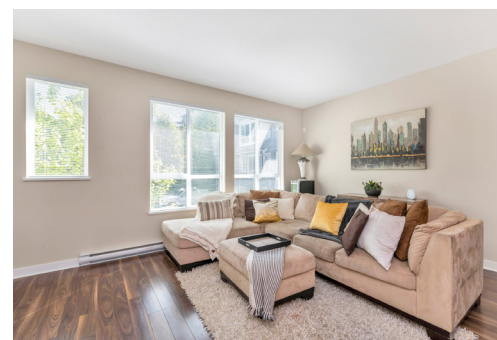
RE/MAX  
ALL POINTS REALTY

Seller's we have buyers for your home!

120 - 1480 Southview Street, Coquitlam



Welcome home to this absolutely gorgeous, Cedar Creek townhouse by Intergulf. Nestled in a quiet cul-de-sac in a highly sought after Burke Mountain neighbourhood, this home has everything you want. 3 large bedrooms upstairs with master bedroom easily accommodating a king sized bed and with vaulted ceilings. Main floor has a large, bright living room, open concept kitchen with high-end appliances and a patio for BBQ. Also on the main is a large powder room for guests. Downstairs is a large entertainment room with full bathroom that could easily be used as 4th bedroom. Large deck and yard as well as a full garage. Steps to transit and close to schools and shopping. Nothing missing here but you, call to view today.



**BARRY CONNERTY**  
CONNERTY IS REAL ESTATE

Price	\$839,000
Tax	\$3615.93/2020
Maint	\$322.77
Size	1,945 sf
Bedrooms	3
Bathrooms	4