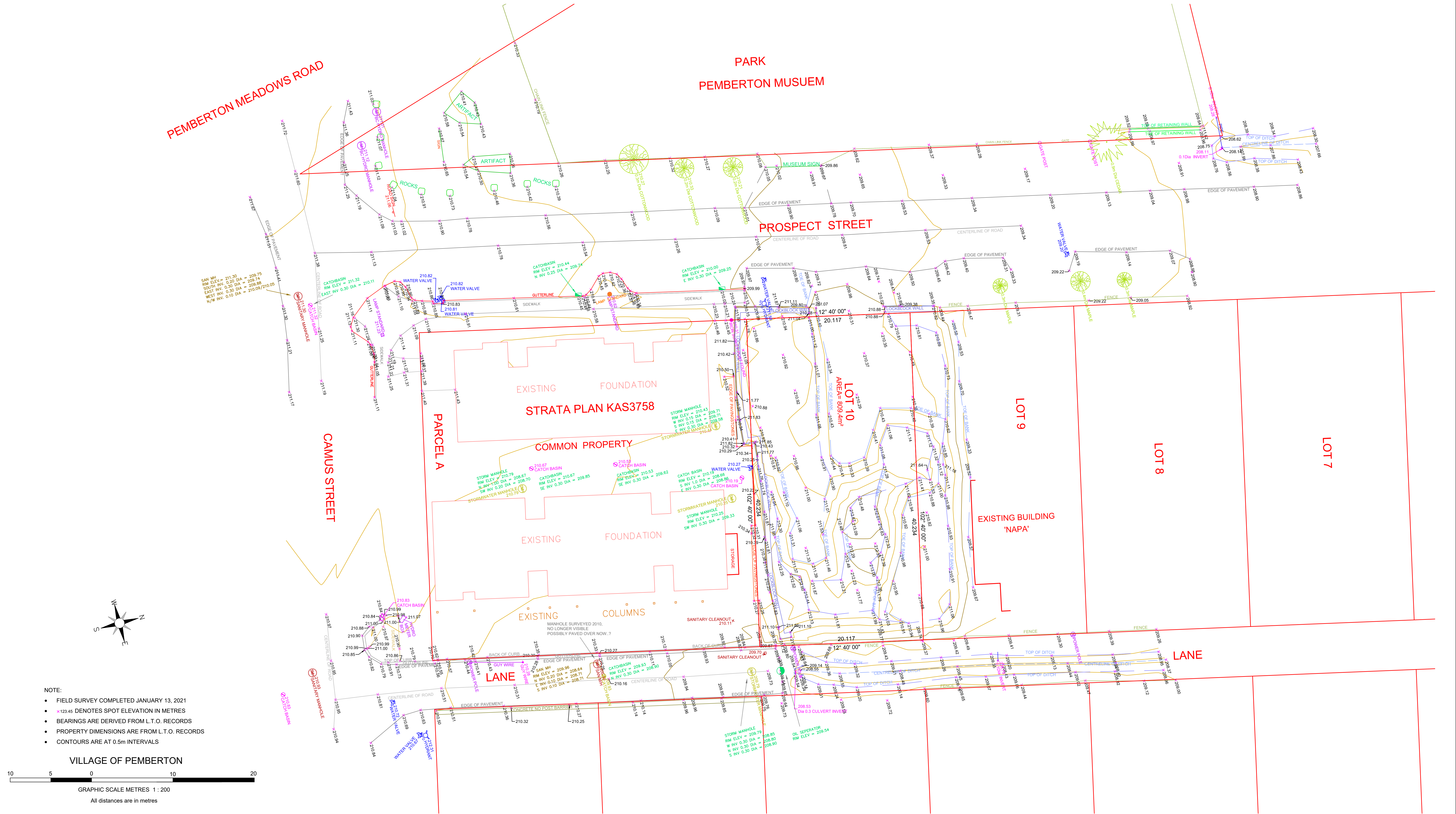


PLAN SHOWING TOPOGRAPHY AND SITE FEATURES SITUATED UPON LOT 10, BLOCK 3, D.L.'S 202 & 203, LILLOOET DISTRICT, PLAN 1624



- NOTE:**
- FIELD SURVEY COMPLETED JANUARY 13, 2021
 - *123.45 DENOTES SPOT ELEVATION IN METRES
 - BEARINGS ARE DERIVED FROM L.T.O. RECORDS
 - PROPERTY DIMENSIONS ARE FROM L.T.O. RECORDS
 - CONTOURS ARE AT 0.5m INTERVALS

VILLAGE OF PEMBERTON



GRAPHIC SCALE METRES 1 : 200

All distances are in metres

DOUG BUSH SURVEY SERVICES Ltd.
Douglas J. Bush, ASCT, RSIS
Applied Science Technologist (Geomatics)
Unit 18, 1370 Alpha Lake Road, Whistler, B.C. V8E 0H9
Phone 932-3314 / Fax: 932-3039
E-mail: dougb@dbss.ca / http://dbss.ca

Revision :

Notes:

ELEVATIONS ARE GEODETIC CVD28 DERIVED FROM WATER RESOURCES MONUMENT NO. 1068 LOCATED ON THE WEST SIDE OF THE PEMBERTON MEADOWS HIGHWAY IN D.L. 202 ELEVATION USED = 211.324 METRES

Plan date:
January 20, 2021

Files:
04211.CRD

P.I.D.: 011-506-652

Client:

Project:

FITZGERALD CONSTRUCTION

7454 PROSPECT STREET

Certified Correct.

Douglas J. Bush ASCT, RSIS
Applied Science Technologist (Geomatics)

This 19th day of January, 2021

SCALE: 1:200

JOB NO.: J21017

DWG.: 21010D_METRIC

SHEET: