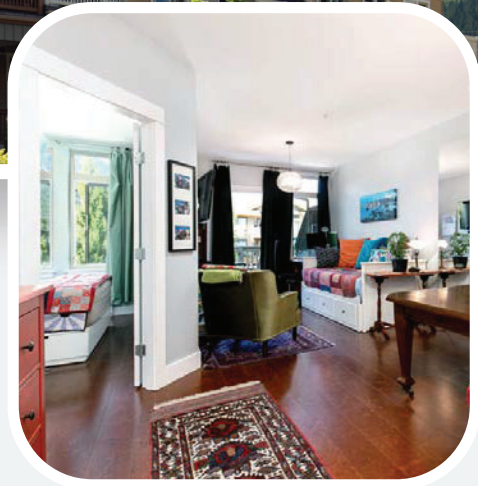


---

Offered at  
**\$495,000**

---



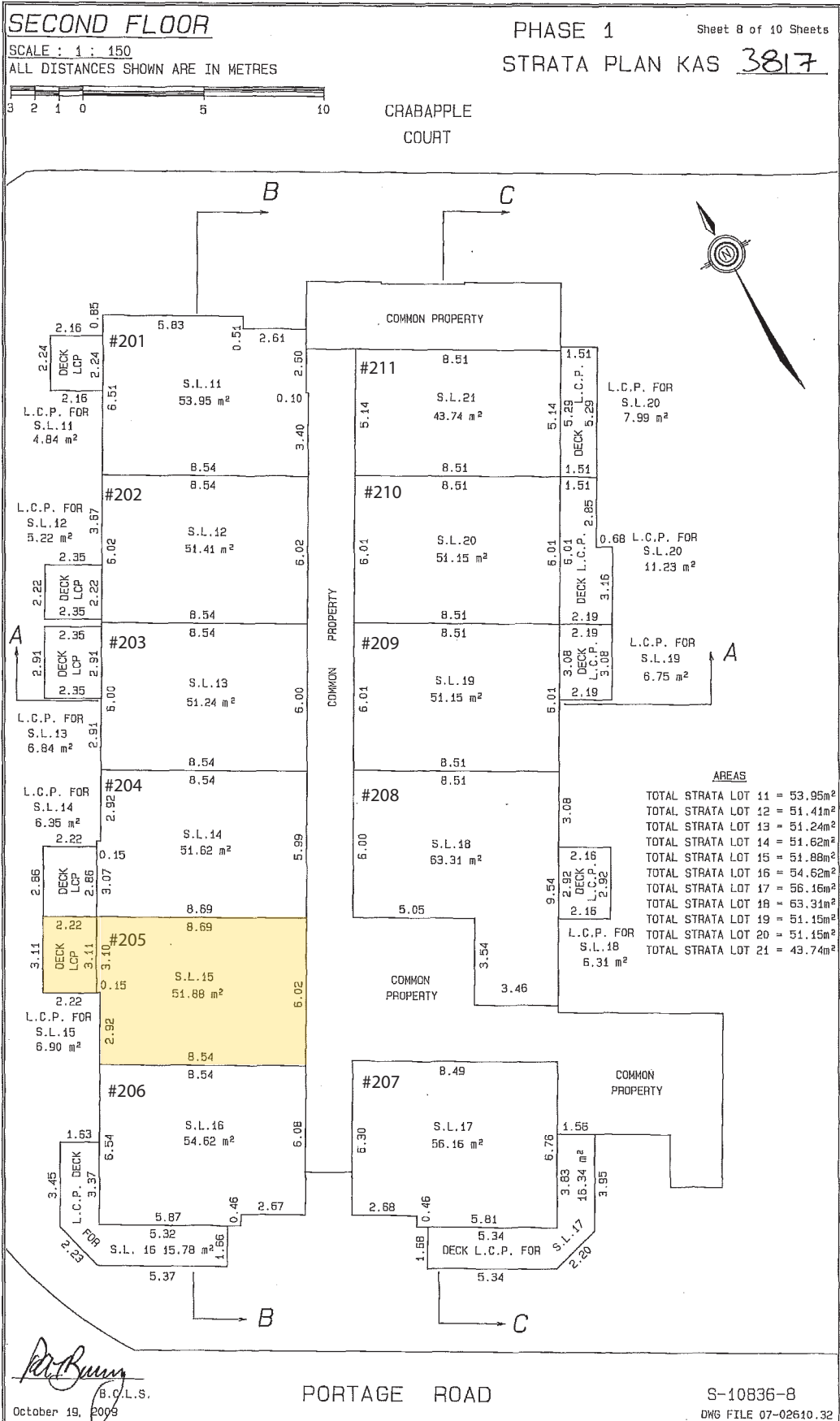
## 205 Pemberton Gateway

Centrally located one bedroom condo with great views, a beautiful renovation and offering fantastic value! The stylish updates include cork flooring throughout, custom tile and a bright, very functional kitchen and new bathroom. Off the living space is a private balcony with a beautiful mountain view, a perfect spot to enjoy your morning coffee.

### Features

- 1 Bedrooms
- 1 Bathroom
- Underground Parking
- Balcony
- Storage locker
- Open Concept
- New Kitchen
- Bright & Spacious

WHISTLER  
REAL ESTATE  
COMPANY



ORIGINAL

# THIRD FLOOR

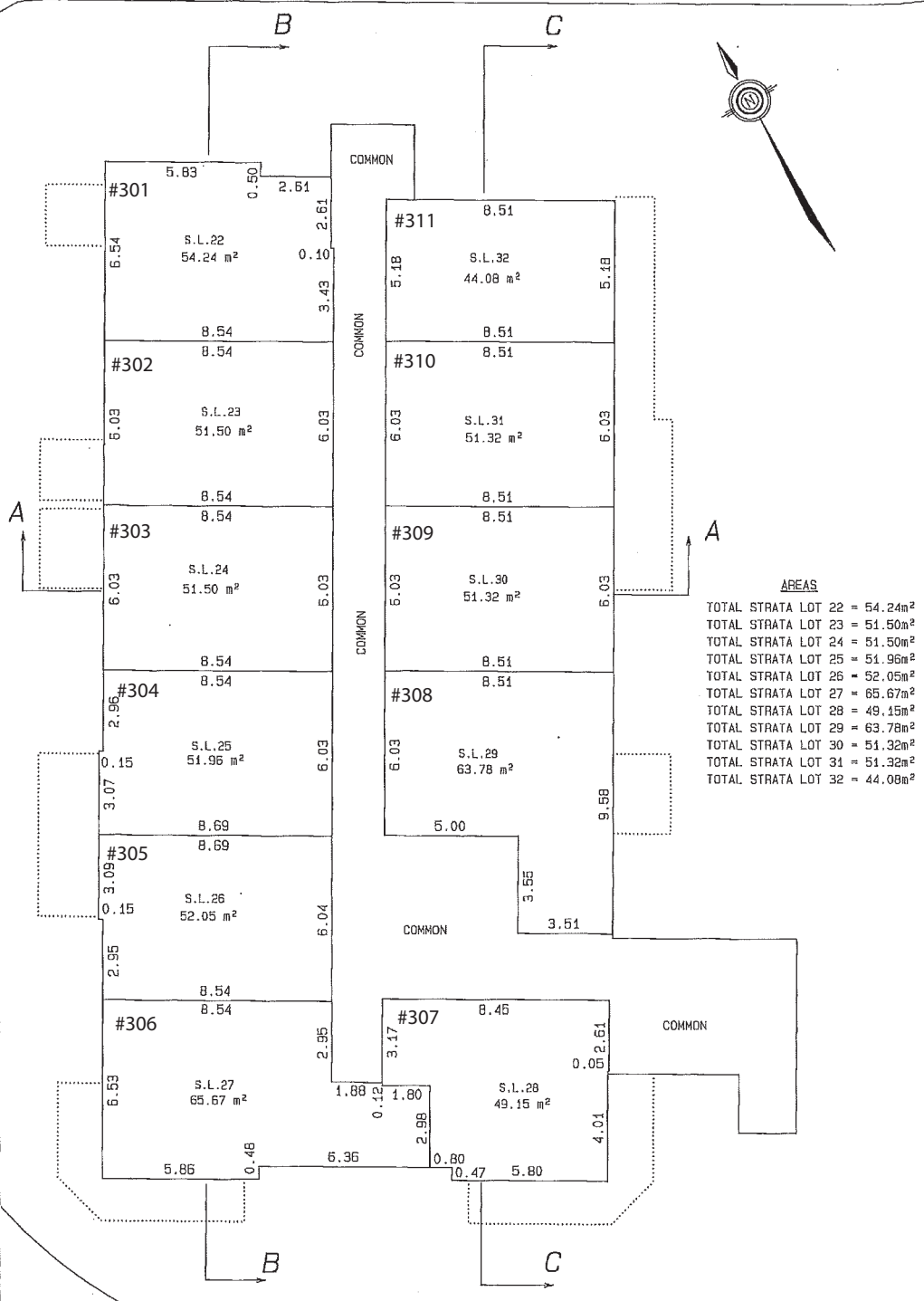
# PHASE 1 STRATA PLAN KAS 3817

Sheet 9 of 10 Sheets

SCALE : 1 : 150  
ALL DISTANCES SHOWN ARE IN METRES



CRABAPPLE  
COURT



**AREAS**

TOTAL STRATA LOT 22	= 54.24m <sup>2</sup>
TOTAL STRATA LOT 23	= 51.50m <sup>2</sup>
TOTAL STRATA LOT 24	= 51.50m <sup>2</sup>
TOTAL STRATA LOT 25	= 51.96m <sup>2</sup>
TOTAL STRATA LOT 26	= 52.05m <sup>2</sup>
TOTAL STRATA LOT 27	= 65.67m <sup>2</sup>
TOTAL STRATA LOT 28	= 49.15m <sup>2</sup>
TOTAL STRATA LOT 29	= 63.78m <sup>2</sup>
TOTAL STRATA LOT 30	= 51.32m <sup>2</sup>
TOTAL STRATA LOT 31	= 51.32m <sup>2</sup>
TOTAL STRATA LOT 32	= 44.08m <sup>2</sup>

*Paul Barry*  
B.C.L.S.  
October 19, 2009

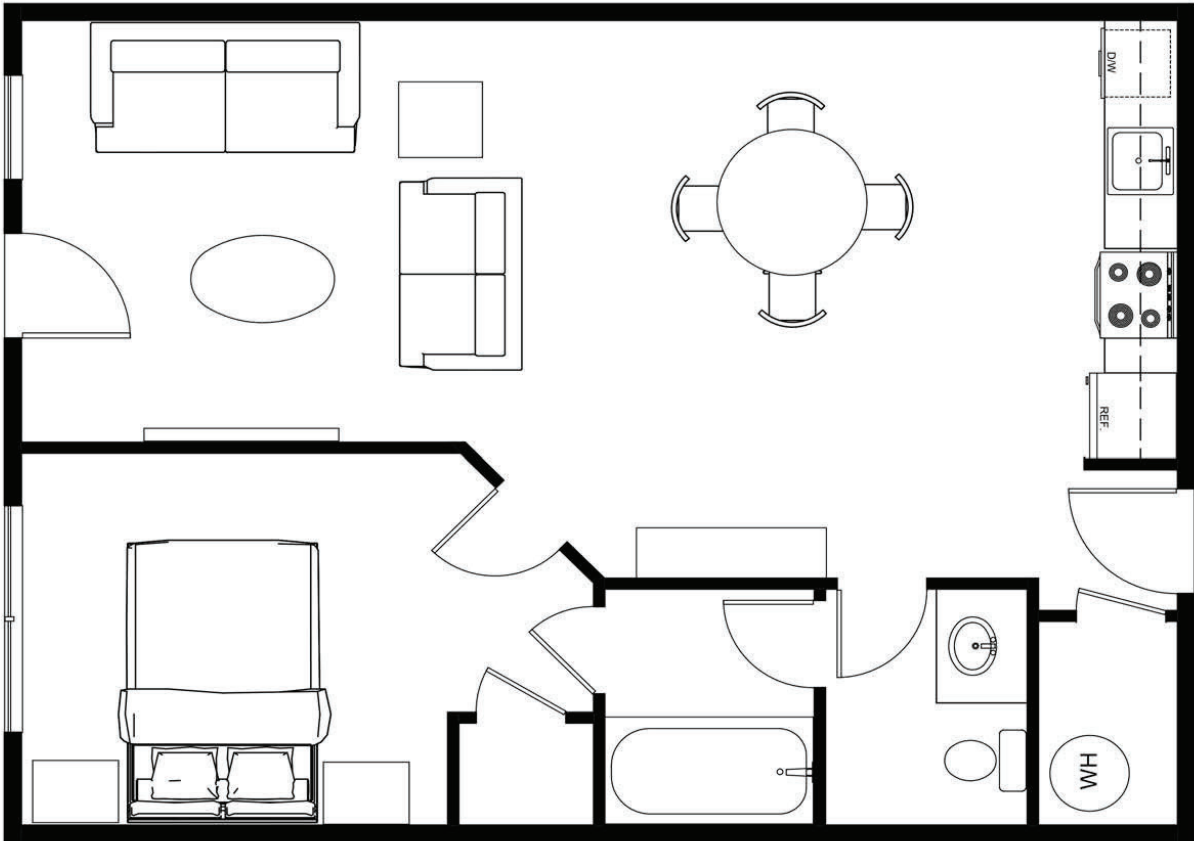
PORTAGE ROAD

S-10836-9  
DWG FILE 07-02610.42

**ORIGINAL**



DECK



HALL

TYPICAL B UNIT 560 SQ FT