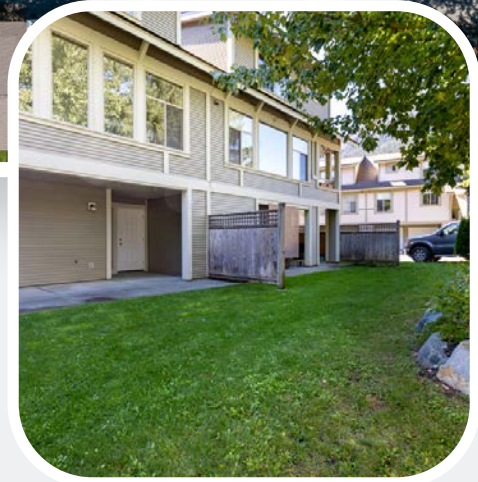
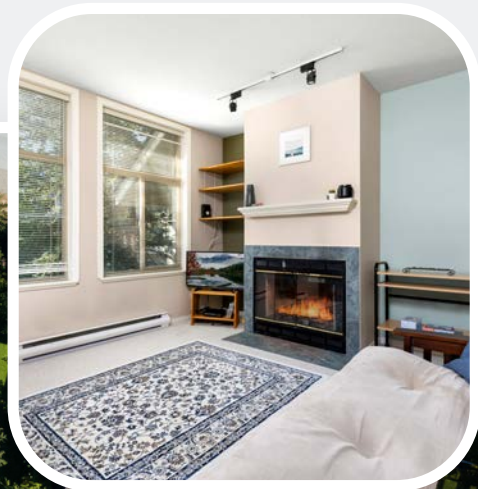


**PEMBERTON:
WHERE YOUR
ROOTS HAVE ROOM
TO GROW.**

Offered at
\$799,000



#4 Monte Vale

Three bedrooms at a 2 bedroom price. Monte Vale is a popular complex situated in the heart of one of Pemberton's most beloved family neighbourhoods. A quiet location within the complex backing onto a walking trail and close to the communities amenities. This home offers room for the whole family as well as all the toys!

Features

- 3 Bedrooms
- 2 Bathrooms
- Garage
- Garden Patio
- Ample Storage
- Fireplace
- Spacious Kitchen
- 2 Parking Spots

Contact Us DANIELLE MENZEL PREC*



604.698.5128

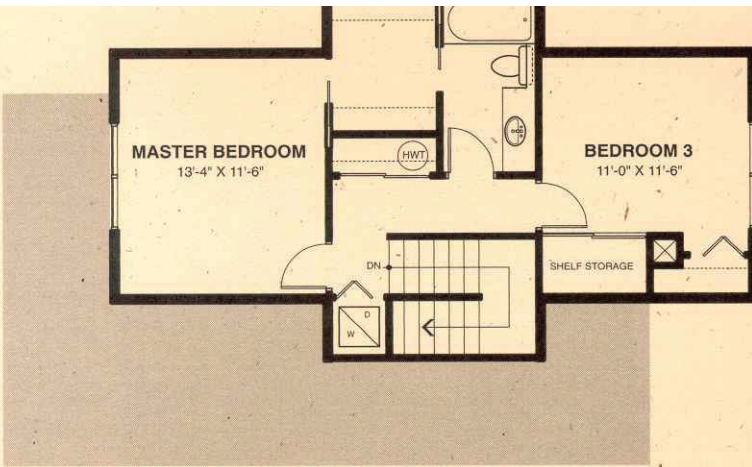


danielle@wrec.com

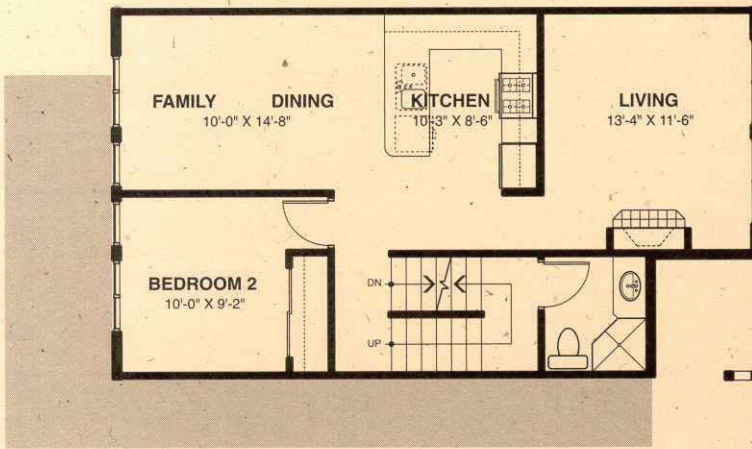


www.RealestatePemberton.com

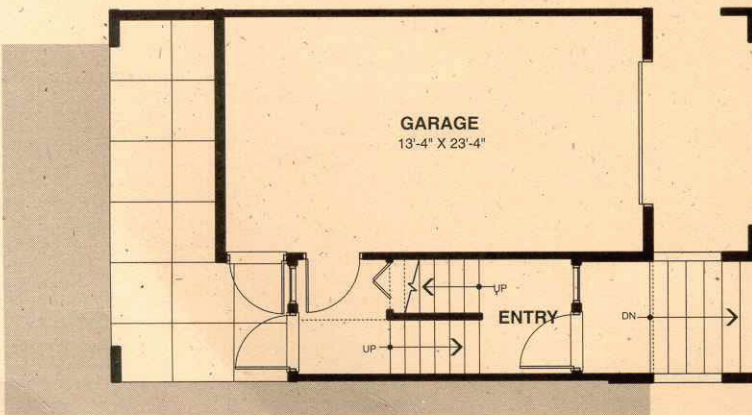
THE WHISTLER REAL ESTATE CO. LTD.



UPPER LEVEL
575 SQ FT



MAIN LEVEL
702 SQ FT



LOWER LEVEL
110 SQ FT

UNIT "C"
THREE BEDROOM
1,387 SQ FT

THREE LEVEL
WITH GARAGE

MONTE VALE
TOWNHOMES
PEMBERTON, B.C.

