

---

Offered at  
**\$699,000**

---



## 302 Winchester

Spectacular views, beautiful updates, and a great location! Located on the top floor, this home gets plenty of sun light, and features a large balcony, and fully updated kitchen and bathroom. This condo offers plenty of storage including a designated storage locker as well as 2 parking stalls in the secured underground with elevator access.

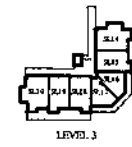
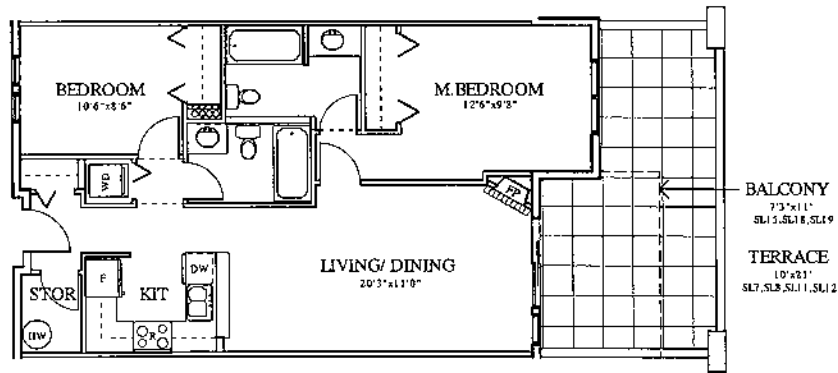
### Features

- 2 Bedrooms
- 2 Bathrooms
- Vaulted Ceilings
- Large Sundeck
- Storage Locker
- 2 Underground Parking stalls
- In-Suite Laundry
- Top Floor

WHISTLER  
REAL ESTATE  
COMPANY

## Floor Plans

Mirror of Floor Plan



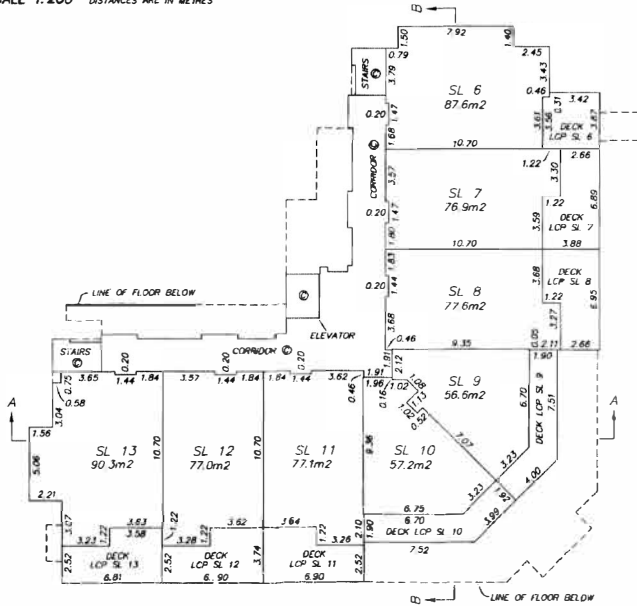
**UNIT B**  
2 BEDROOM  
76.3 M<sup>2</sup> (821.3 FT<sup>2</sup>)

THE WINCHESTER

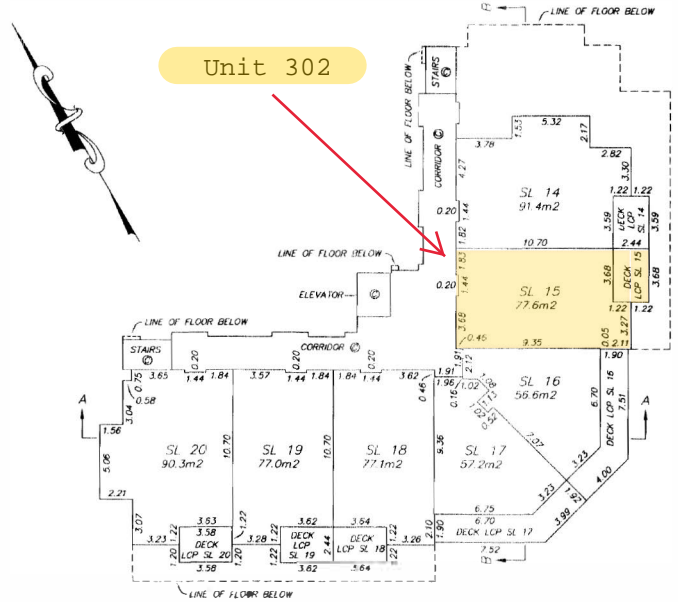
**FLOOR PLANS AND SECTION**

**STRATA PLAN KAS2800**

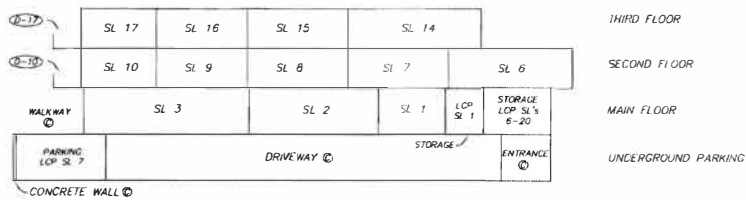
SCALE 1:200 DISTANCES ARE IN METRES



**SECOND FLOOR**



**THIRD FLOOR**



**SECTION B - B**

APRIL 6th, 2005

B.C.L.S

BUTLER SUNDVICK & ASSOCIATES  
 PROFESSIONAL LAND SURVEYORS  
 107 - 32885 Veituro Avenue  
 ABBOTSFORD, B.C. V2S 6A3  
 TEL: (604) 853-2300  
 FAX: (604) 853-2710  
 FILE: M3132  
 DWG: 3132S-C