

---

Offered at  
**\$579,000**

---



## 311 Elements

A bright and airy condo in the heart of Pemberton! This home was designed with clean contemporary finishes, a stainless-steel appliance package, and big windows to maximize the light throughout. Enjoy the morning light from your east facing living room and bedroom, and savour the amazing view of Mount Currie.

### Features

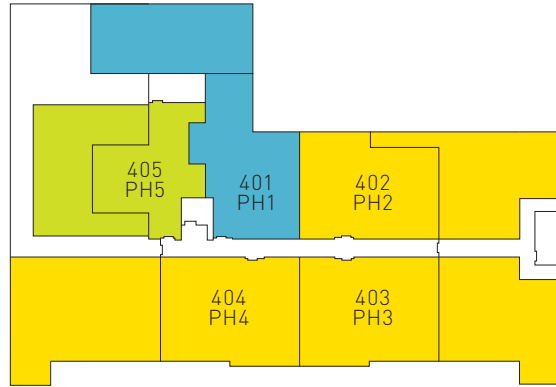
- Central Locale
- 1 Bedroom + Den
- 1 Bathroom
- Rooftop Patio
- Bike Storage
- Underground Parking
- In-Suite Laundry
- Bright & Spacious

WHISTLER  
REAL ESTATE  
COMPANY

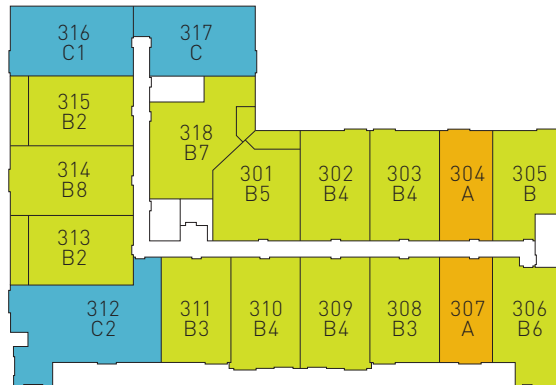
# BUILDING PLAN

- STUDIO / JUNIOR 1 BEDROOM ■
- 1 BEDROOM + DEN ■
- 2 BEDROOM / 2 BEDROOM + DEN ■
- 3 BEDROOM ■

FOURTH FLOOR



THIRD FLOOR

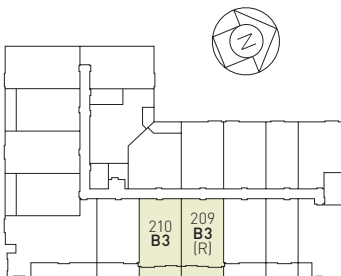
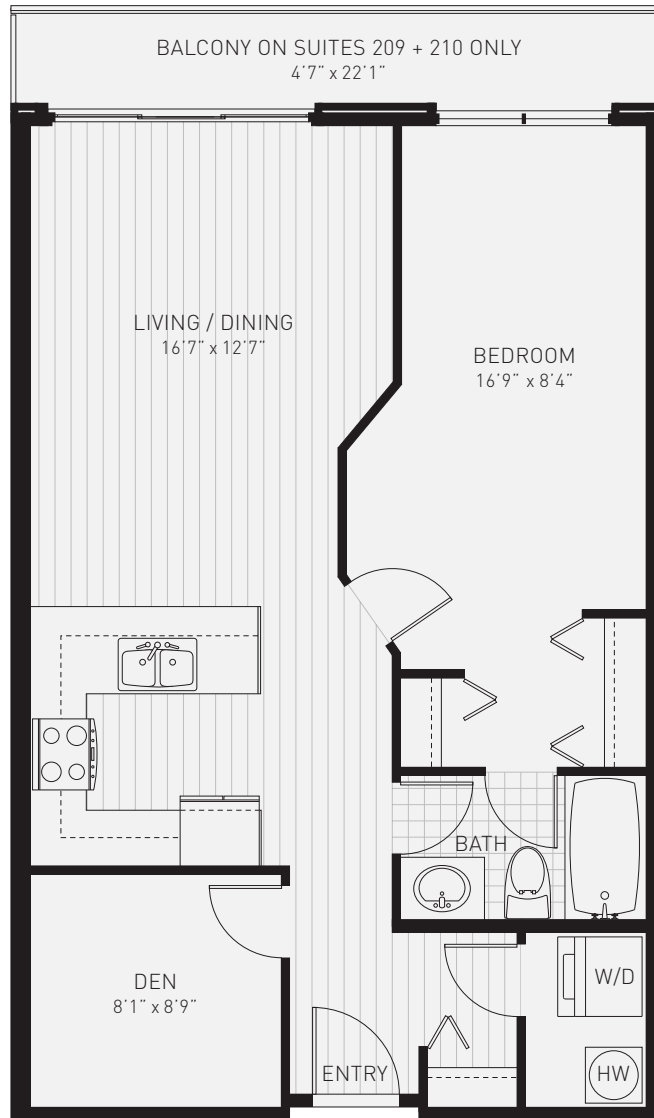


SECOND FLOOR

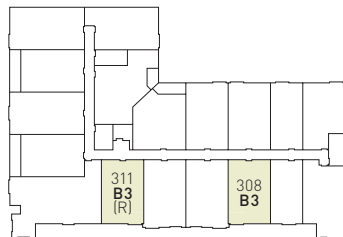


# PLAN B3 732 – 764 SQ FT

1-BEDROOM + DEN, BALCONY



SECOND FLOOR



THIRD FLOOR

(R) DENOTES REVERSE OF PLAN.