



107-7350 CRABAPPLE DRIVE

Two bedroom, two bathroom energy efficient
condo at the entrance to Pemberton

Offered at \$579,000

New Home Warranty
Underground Garage
Energy Efficient

Corner Unit
E V Charging Station
Steps from trails

Orion is a state of the art, energy efficient condo building located at the entrance to downtown Pemberton. This property was completed in 2020 using some of the most energy saving building practices available. #107 is a two bedroom, two bathroom corner unit with a very spacious open concept living area. Enjoy the morning light that pours in from the east-facing glass doors off the master and the living room. The kitchen has a modern design, stainless steel appliances and ample island countertop with seating for four at the breakfast bar. The master bedroom has a walk-through closet to the full ensuite, and there is in-suite laundry. The building design has underground access to your private 1 car garage; plenty of room for storage and parking. Elements uses “Sun’s Energy” and air sourced heat pump for primary heat, (which has a cooling effect in the summer), with digital thermostats as backup heat for the coldest days. The heat and the hydro bill are all included in your monthly strata fee. This is truly a great home in town with quick, walkable access to everything Pemberton has to offer.

PEMBERTON: WHERE YOUR ROOTS HAVE ROOM TO GROW.

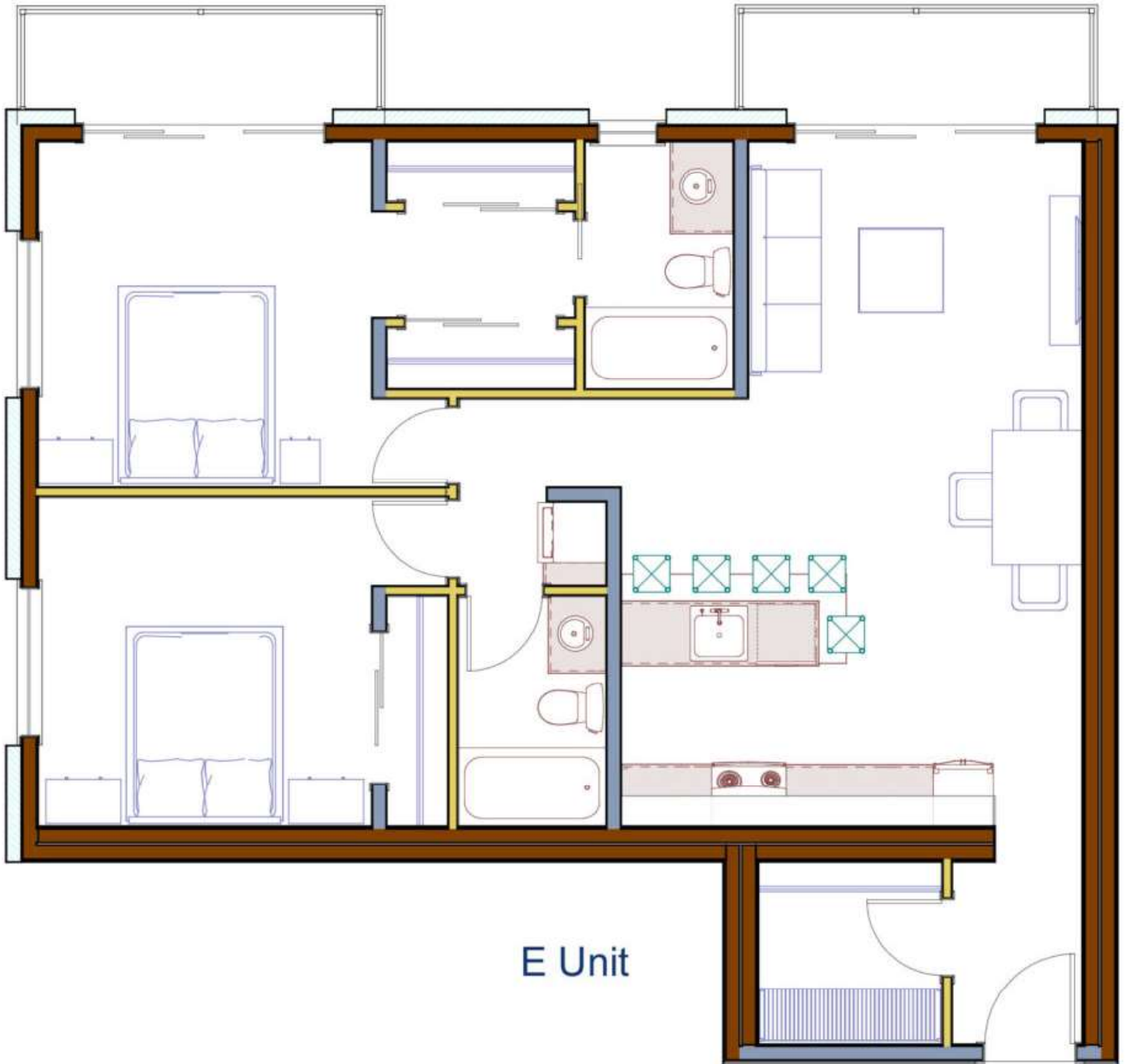


The
WHISTLER REAL ESTATE
Company Limited



REALESTATEPEMBERTON.COM

📞 604.698.5128 ✉️ danielle@wrec.com



E Unit



