

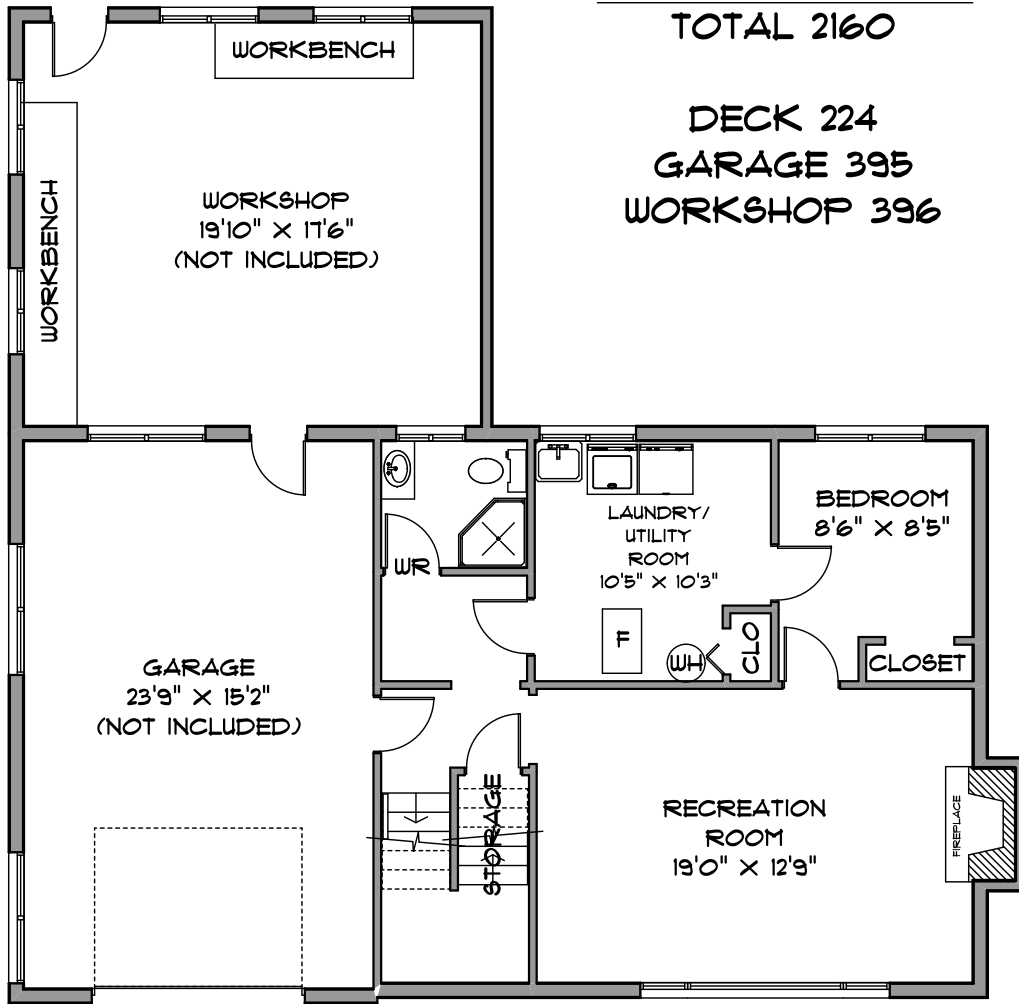
12219 CRESTON STREET
MAPLE RIDGE



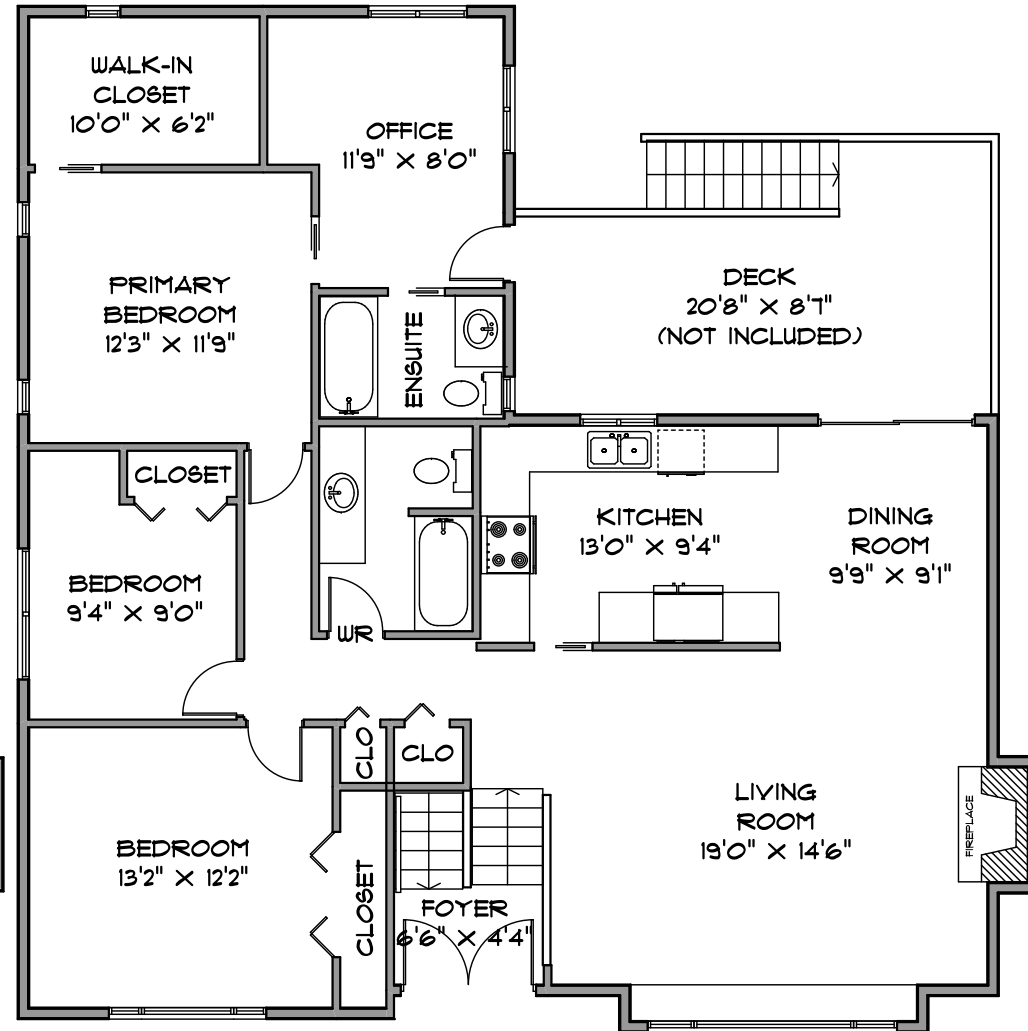
LESLEY McDONNELL
778-838-2378

SQUARE FOOTAGE
MAIN LEVEL 1496
LOWER LEVEL 664
TOTAL 2160

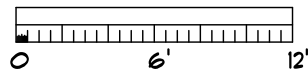
DECK 224
GARAGE 395
WORKSHOP 396



LOWER LEVEL 664 SQ. FT.



MAIN LEVEL 1496 SQ. FT.



MEASUREMENTS SHOULD BE CONSIDERED APPROXIMATE
AND ARE FOR PROMOTIONAL USE ONLY.
E & O Insured

778-231-6542 JANUARY 2022

