



Tracey Bosch

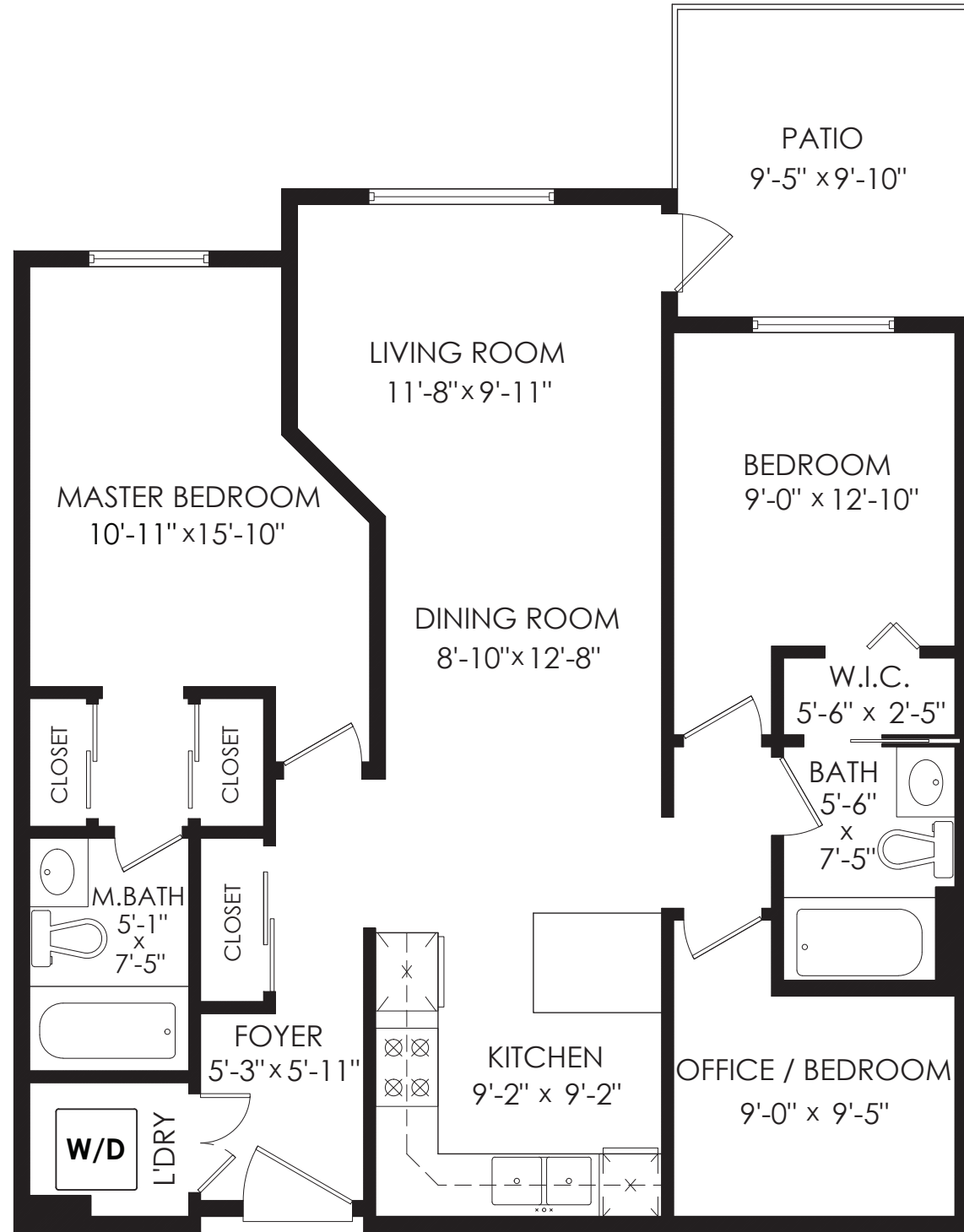
Personal Real Estate Corporation
604.539.SOLD (7653)
admin@traceybosch.com
www.traceybosch.com

*"Building Clients
For Life"*



116-19774 56 Ave, Langley

Floor Area: 962 sq.ft.
Patio: 91 sq.ft.
Ceiling Height: 7'-11"



Measurements, Design & Scanning | 604-329-5788

E&O Insured. Total square foot calculated to gross unit area. SQFT based on interior measurements to exterior walls, not taken from original blueprints, may include unfinished area. This is for marketing purposes only and is not intended for architectural/construction use. All details, sizes & placements should be considered approximate within +/- 2% tolerance. www.PixlWorks.com



The enclosed information while deemed to be correct, is not guaranteed.
This communication is not intended to solicit properties already listed for sale.

Produced and printed by **cotala** www.cotala.com

116 - 19774 56 AVENUE, LANGLEY



COMPLIMENTS OF

Tracey Bosch

Personal Real Estate Corporation

604.539.SOLD (7653)
admin@traceybosch.com
www.traceybosch.com

*"Building Clients
For Life"*



Wolstencroft Realty
INDEPENDENTLY OWNED AND OPERATED, BROKER



TAKE THE TOUR

116 - 19774 56 AVENUE, LANGLEY

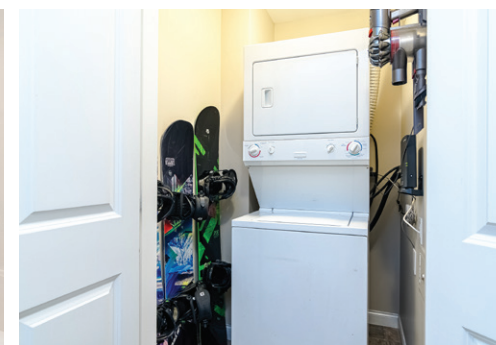


Large covered patio - WALK-OUT to LAWN AND GARDENS. STUNNING - Impeccably kept, beautifully updated & decorated GROUND FLOOR 2 bedroom, 2 bathroom & den with air conditioning, in-suite laundry, in-suite storage, storage locker & 2 underground parking spaces in Madison Station! Well laid out with separated bedrooms each with own bathroom. Gorgeous kitchen with granite breakfast bar counter & stainless steel appliances. Off the living room is a large patio to enjoy your morning coffee or afternoon bbq. Well maintained building with recreation & exercise room make this a great place to call home. Walk to shops, restaurants, Samz Neighborhood Pub, transit, parks, recreation & miles of nature trails. Close to Willowbrook Mall & major driving routes.



Tracey Bosch

Personal Real Estate Corporation
"Building Clients For Life"



Style	Ground Level
Maint. Size	\$388.57
Size	962 sf
Bedrooms	2
Bathrooms	2