

#306 - 2285 BOWKER AVE.

VICTORIA, BC

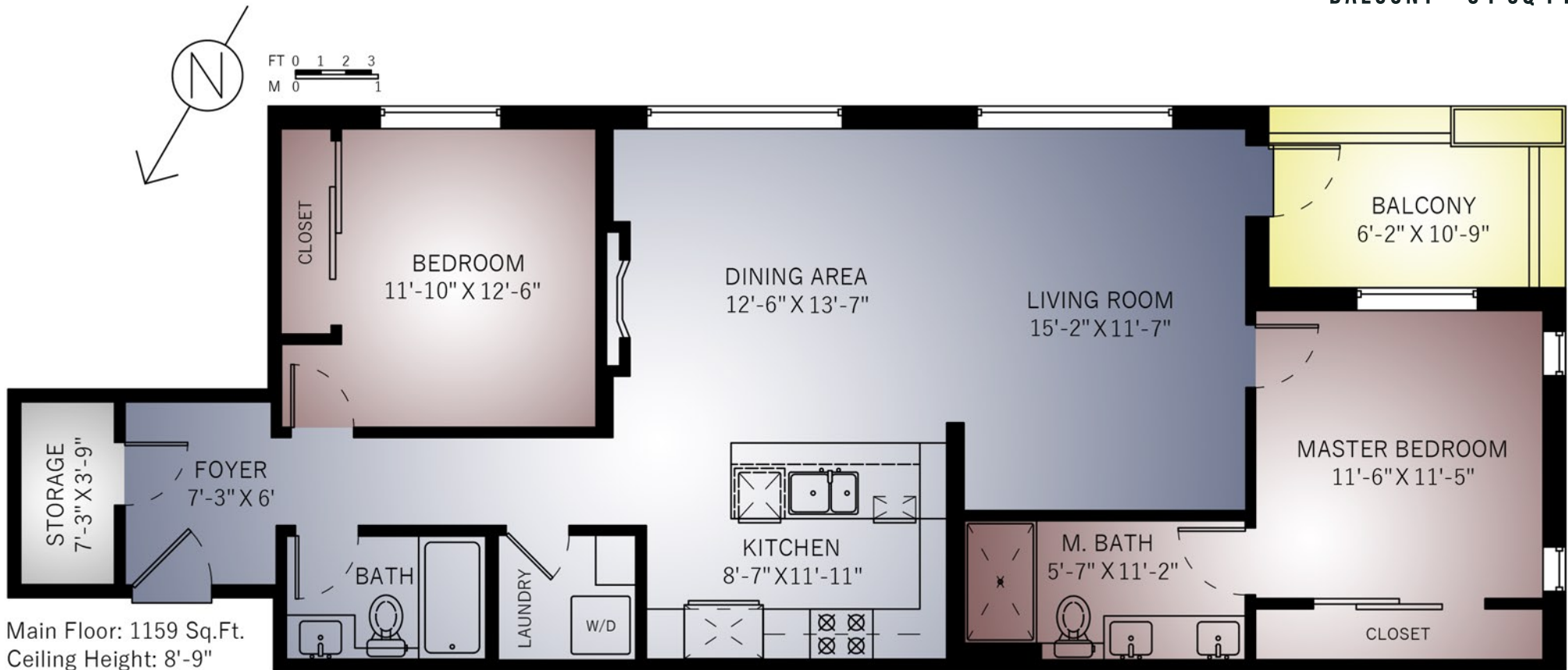
2 BEDROOMS

2 BATHROOMS

1159 SQUARE FEET

MAIN FLOOR - 1159 SQ FT

BALCONY - 64 SQ FT



BOBBY SPARROW
REAL ESTATE



WWW.BOBBYSPARROWREALTY.COM