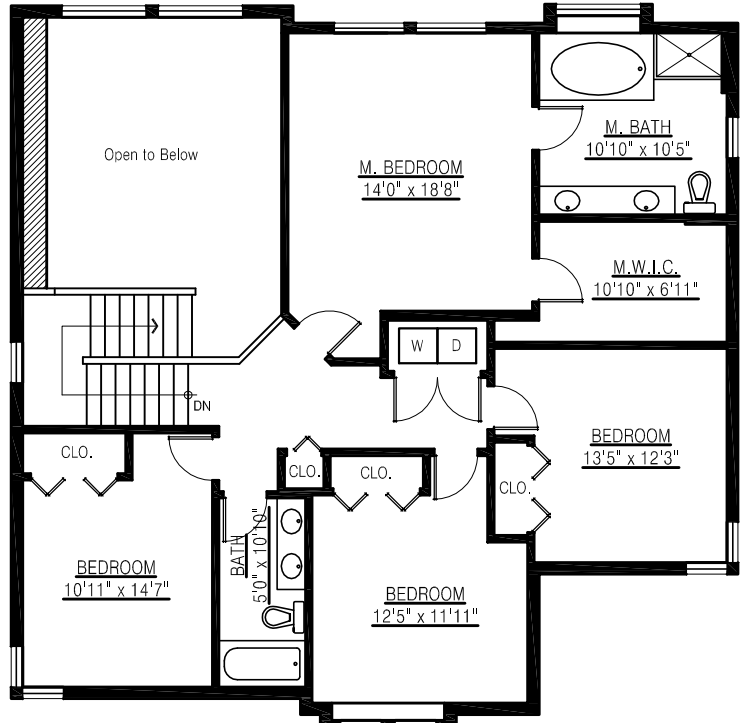


**1211 Burkemont Place
Coquitlam, BC**

Lower Floor: 1,305 sq. ft.
Main Floor: 1,365 sq. ft.
Upper Floor: 1,265 sq. ft.
Total: 3,935 sq. ft.

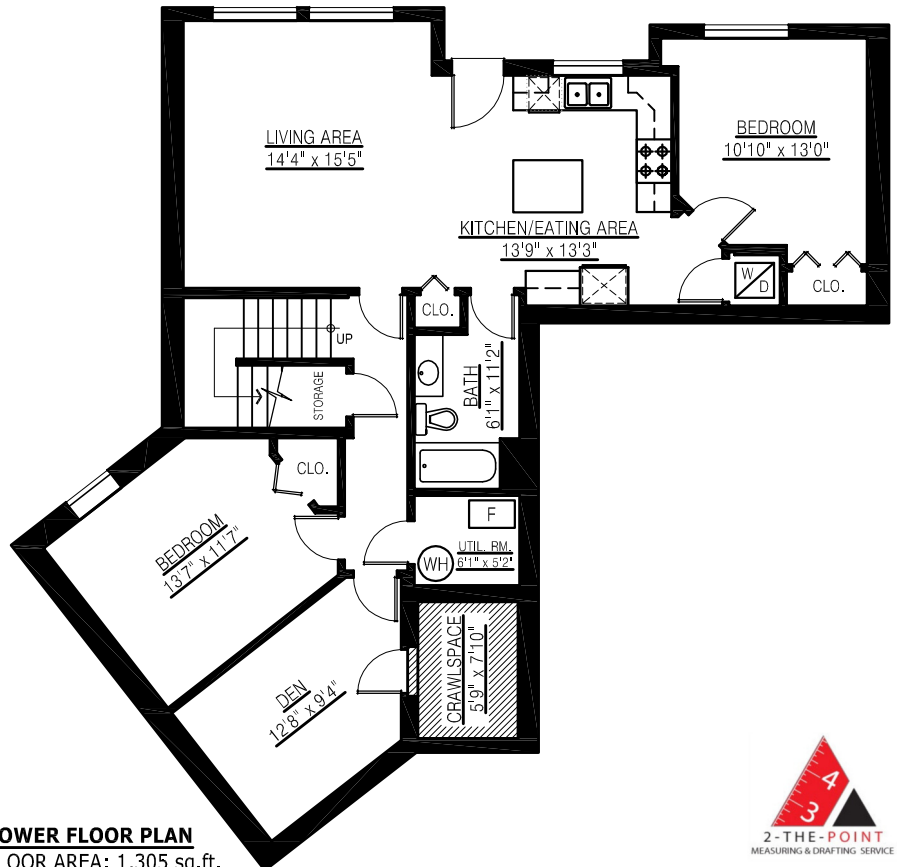
Decks: 361 sq. ft.
Crawlspace: 60 sq. ft.



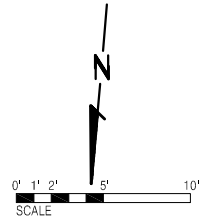
UPPER FLOOR PLAN
FLOOR AREA: 1,265 sq.ft.



MAIN FLOOR PLAN
FLOOR AREA: 1,365 sq.ft.



LOWER FLOOR PLAN
FLOOR AREA: 1,305 sq.ft.



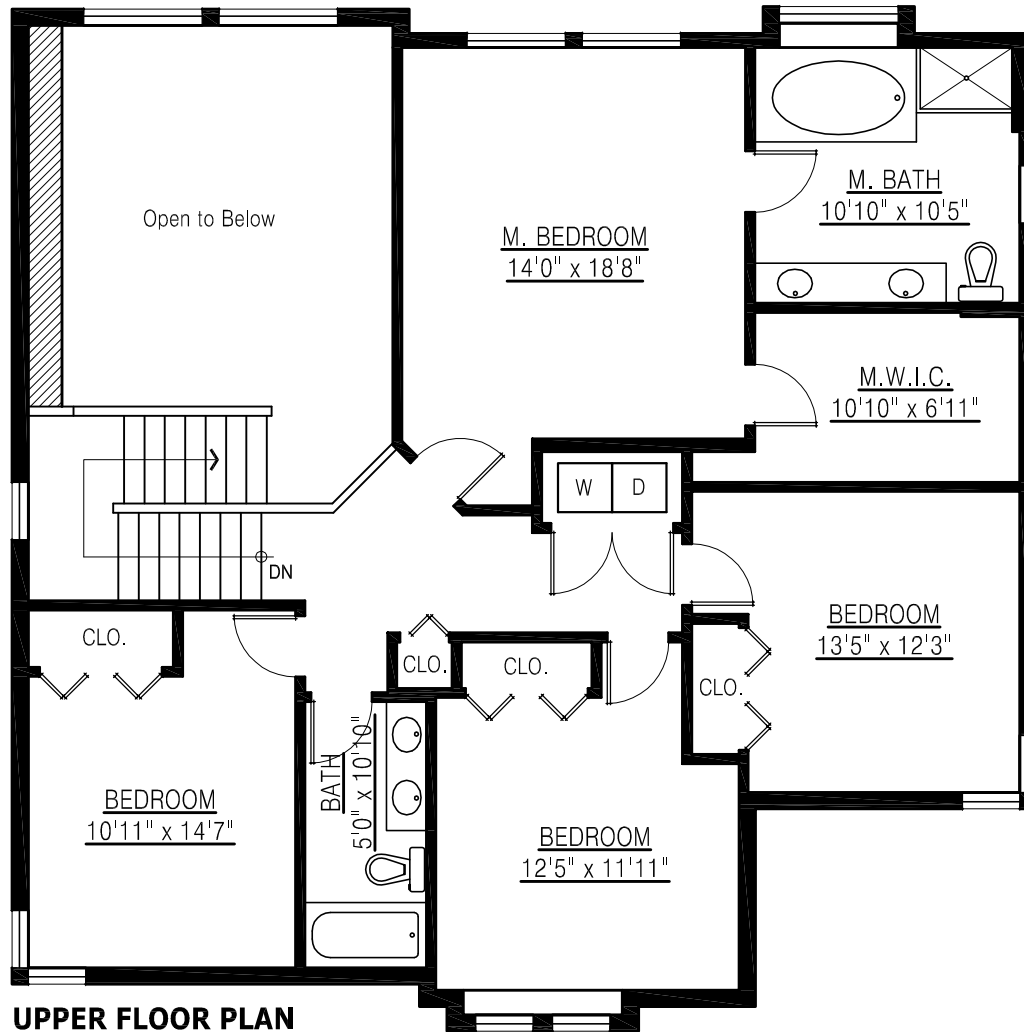
Lower Floor: 1,305 sq. ft.
Main Floor: 1,365 sq. ft.
Upper Floor: 1,265 sq. ft.
Total: 3,935 sq. ft.

Decks: 361 sq. ft.
Crawlspace: 60 sq. ft.

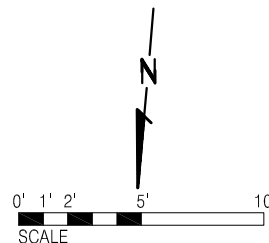


Lower Floor: 1,305 sq. ft.
Main Floor: 1,365 sq. ft.
Upper Floor: 1,265 sq. ft.
Total: 3,935 sq. ft.

Decks: 361 sq. ft.
Crawlspace: 60 sq. ft.



UPPER FLOOR PLAN
FLOOR AREA: 1,265 sq.ft.



Lower Floor: 1,305 sq. ft.
Main Floor: 1,365 sq. ft.
Upper Floor: 1,265 sq. ft.
Total: 3,935 sq. ft.

Decks: 361 sq. ft.
Crawlspace: 60 sq. ft.



LOWER FLOOR PLAN
FLOOR AREA: 1,305 sq.ft.

