

\$535,000

212-898 Vernon Ave
Saanich, BC
MLS® 937382

Finding your perfect home

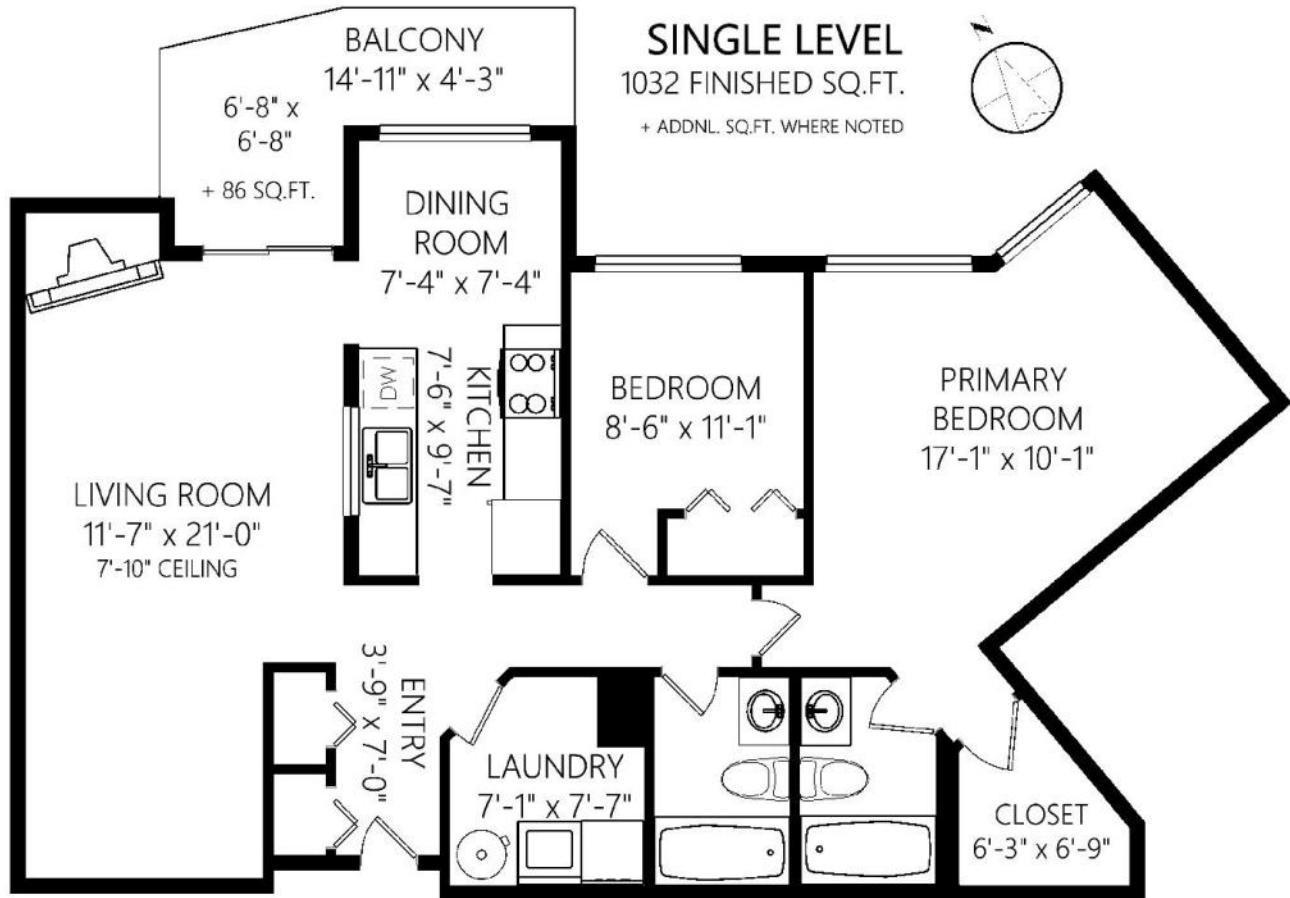
IS WHAT I DO

Property Details

| | | | |
|--------------|--------------------------------|--------------------|------------------------------|
| # Bedrooms | 2 | Parking Type | 1 spot secure underground |
| # Bathrooms | 2 full baths | Rental Restriction | Unrestricted (no short term) |
| Monthly Fee | \$469 | Pet Restriction | 1 dog or 2 cats |
| Fee includes | Management, garbage, insurance | Age Restriction | none |
| Floor Space | 1032 sqft | Property Taxes | \$2,025 (2022) |
| Title | Freehold/Strata | Assessment | \$538,000 (2023) |



212-898 Vernon Ave

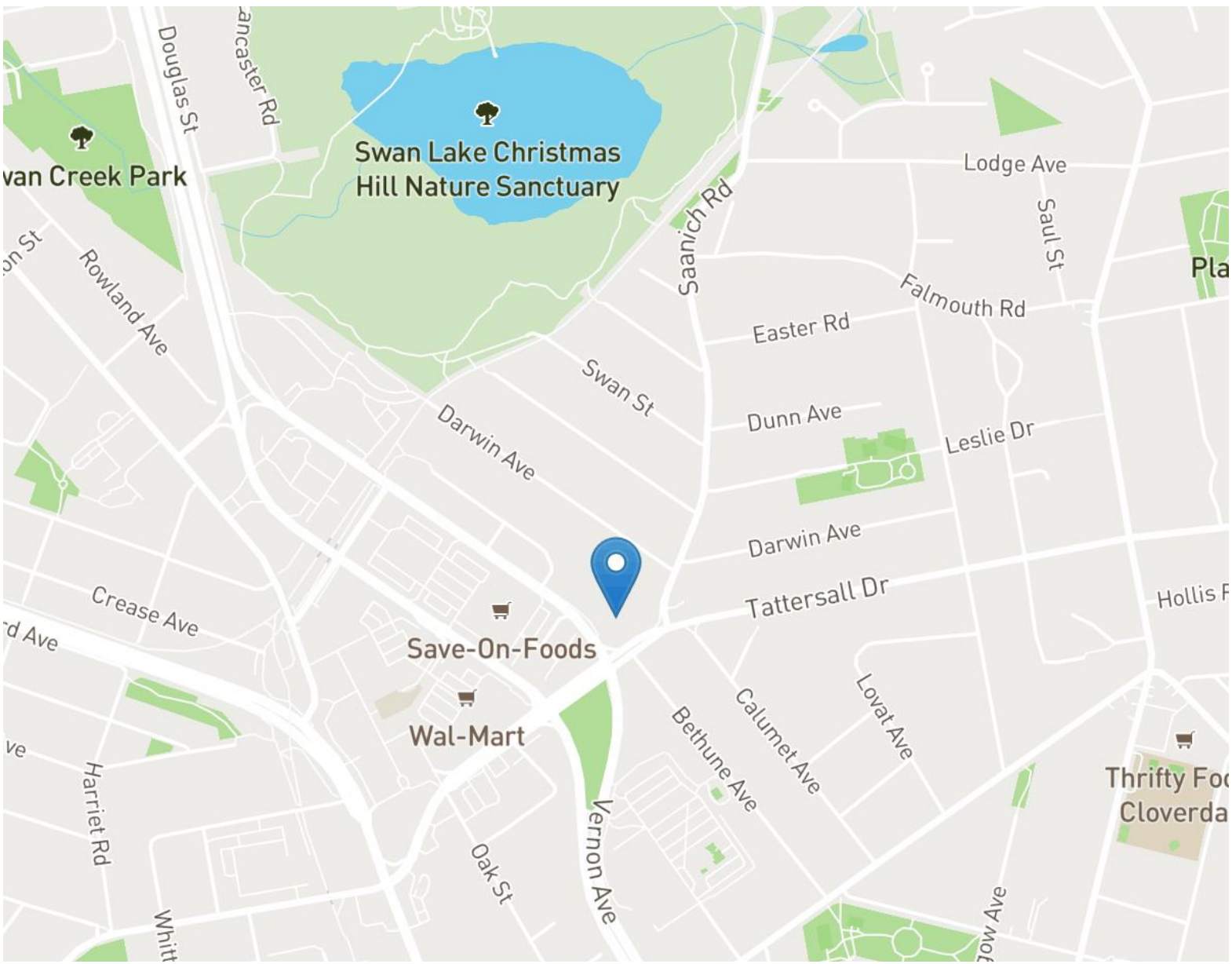


| | Fin. Sq.Ft. | UnFin. Sq.Ft. | Total Sq.Ft. |
|--------------|-------------|---------------|--------------|
| Single Level | 1032 | 0 | 1032 |
| Balcony | 0 | 86 | 86 |
| Total | 1032 | 86 | 1118 |

Shown length and width dimensions are approximate.
 Area sq.ft. is representative of the on-site measurements. (1" accuracy)



Figures, Calculations, and Representations are for indicative and promotional purpose only.
 VI Standard Real Estate Services Inc. will not be liable for any damages of any kind arising from the mis-use of this information.





Discover Uptown Living

Where comfort meets convenience!

Welcome to the Chelsea Green, an outstanding combination of convenience and comfort. Discover the charm of this spacious two-bedroom, two full bath condo spanning just over 1000 sqft. This thoughtfully designed home features a generous master suite with a walk-in closet, ensuite, second bedroom and in suite laundry room. Cozy up in front of the natural gas fireplace and rest easy with secure parking and separate storage. Positioned on the quiet side of the complex overlooking the manicured courtyard, you can relax and enjoy the freedom to BBQ from your spacious deck. This unit offers the flexibility of renting and welcomes your furry friends. Ideally situated walking distance from Uptown Mall, Swan Lake, Save on Foods, Galloping Goose trail, Uptown bus exchange and a wide array of amenities, Chelsea Green is your gateway to a vibrant and fulfilling lifestyle. The existing mortgage is transferable to a qualified buyer with a favorable rate and just over 2 years remaining.

All offices are independently owned and operated, except those marked as "Royal LePage Real Estate Services Ltd., Brokerage", "Royal LePage West Real Estate Services" and "Royal LePage Sussex". Not intended to solicit currently listed properties or buyers under contract. The above information is from sources believed reliable, however, no responsibility is assumed for the accuracy of this information. ©2019 Bridgemark Real Estate Services Manager Limited. All rights reserved.



Mike Vanderkruyk

Personal Real Estate Corporation
c 250.588.1979
mikevdk@royallepage.ca

Royal LePage Coast Capital Realty
2541 Estevan Avenue
Victoria, BC V8R2S6