



**\$1,539,000**

**4042 Cavallin Court**

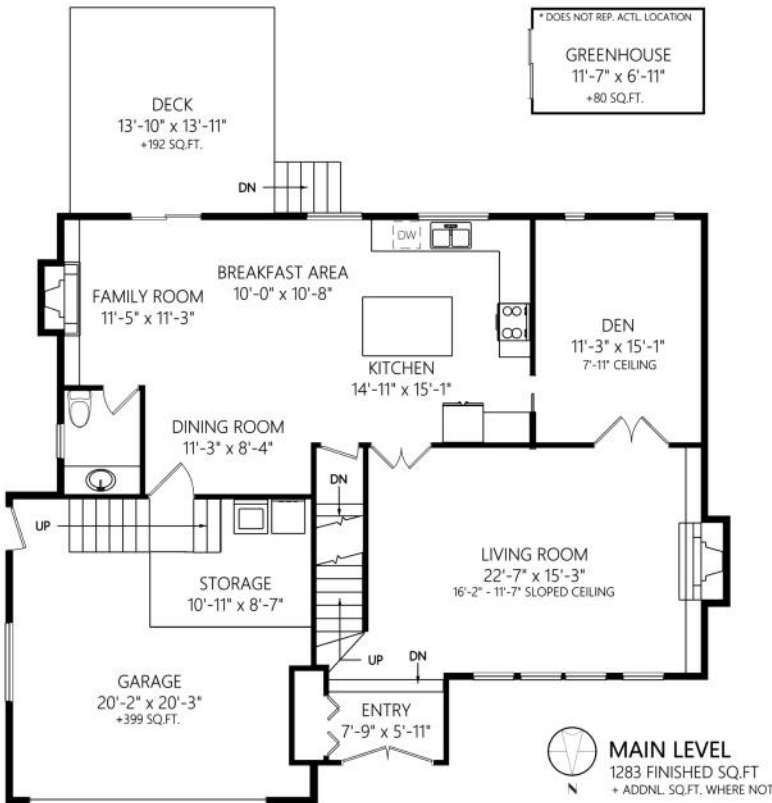
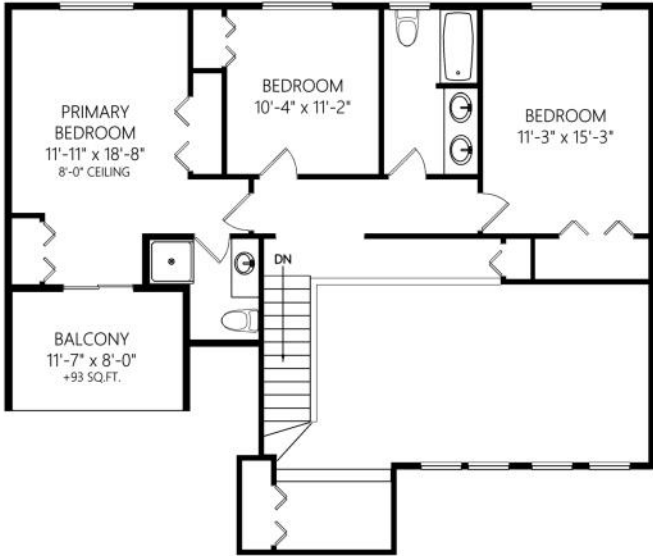
Saanich, BC  
MLS® 960857

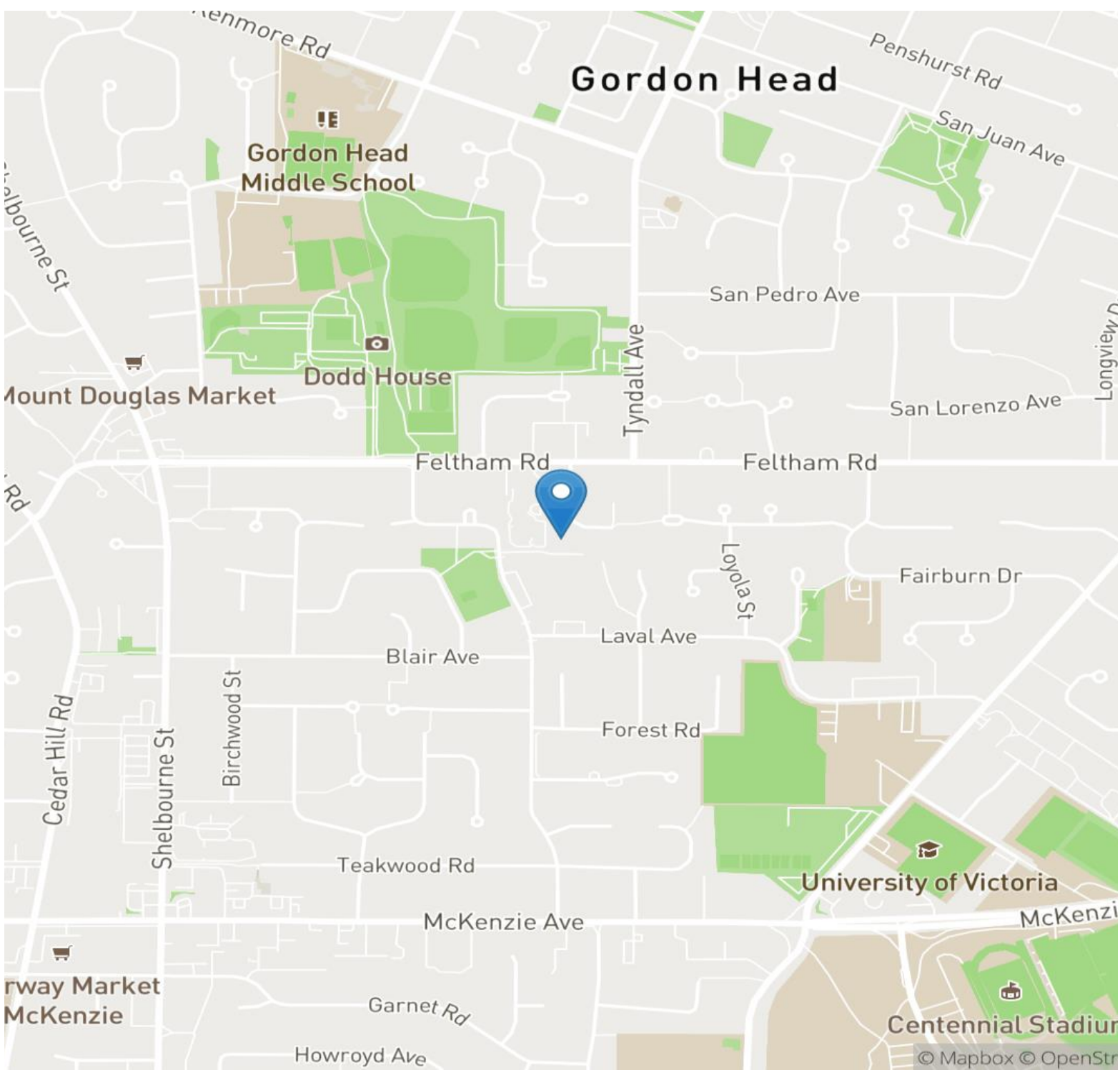
Finding your perfect home

**IS WHAT I DO**

Property Details

# Bedrooms	6 plus den	Parking Type	Double Garage
# Bathrooms	5	Fireplace	Living room/electric
Suite	Flexible layout 3 bedroom	Neighborhood	Lambrick Park
Lot Size	6,853 sqft	Year Built	1979
Floor Space	3,315 sqft	Property Taxes	\$5,629 (2023)
Title	Freehold	Assessment	\$1,353,000 (2024)







# Gordon Head Gem!

## Discover versatility and convenience

This generously sized home boasts 3,300 sqft including a total of 6 bedrooms, a den, 5 bathrooms and double garage, this home is designed for modern living. The welcoming entry leads to a spacious living room with cathedral ceilings and a electric fire place. The updated kitchen features a stainless appliance package, granite counters and modern flooring. The adjacent den can be used as a dining room or extra bedroom. Upstairs we have the large primary bedroom with dual closets, full ensuite and private balcony. Two more bedrooms and another full bath make this level ideal for families. On the lowest floor we have tremendous opportunity. The current use is as a three bedroom, 2 bathroom suite but it can also be reconfigured to meet your needs. The low traffic cul-de sac location is directly across the street from Gordon Head rec center and very close to all levels of education. This grand home is worth checking out!

All offices are independently owned and operated, except those marked as "Royal LePage Real Estate Services Ltd., Brokerage", "Royal LePage West Real Estate Services" and "Royal LePage Sussex". Not intended to solicit currently listed properties or buyers under contract. The above information is from sources believed reliable, however, no responsibility is assumed for the accuracy of this information. ©2019 Bridgemark Real Estate Services Manager Limited. All rights reserved.



**Mike Vanderkruyk**

Personal Real Estate Corporation  
c 250.588.1979  
mikevdk@royallepage.ca

Royal LePage Coast Capital Realty

2541 Estevan Avenue  
Victoria, BC V8R2S6

Scan QR code for  
more info and  
multimedia  
showcase

