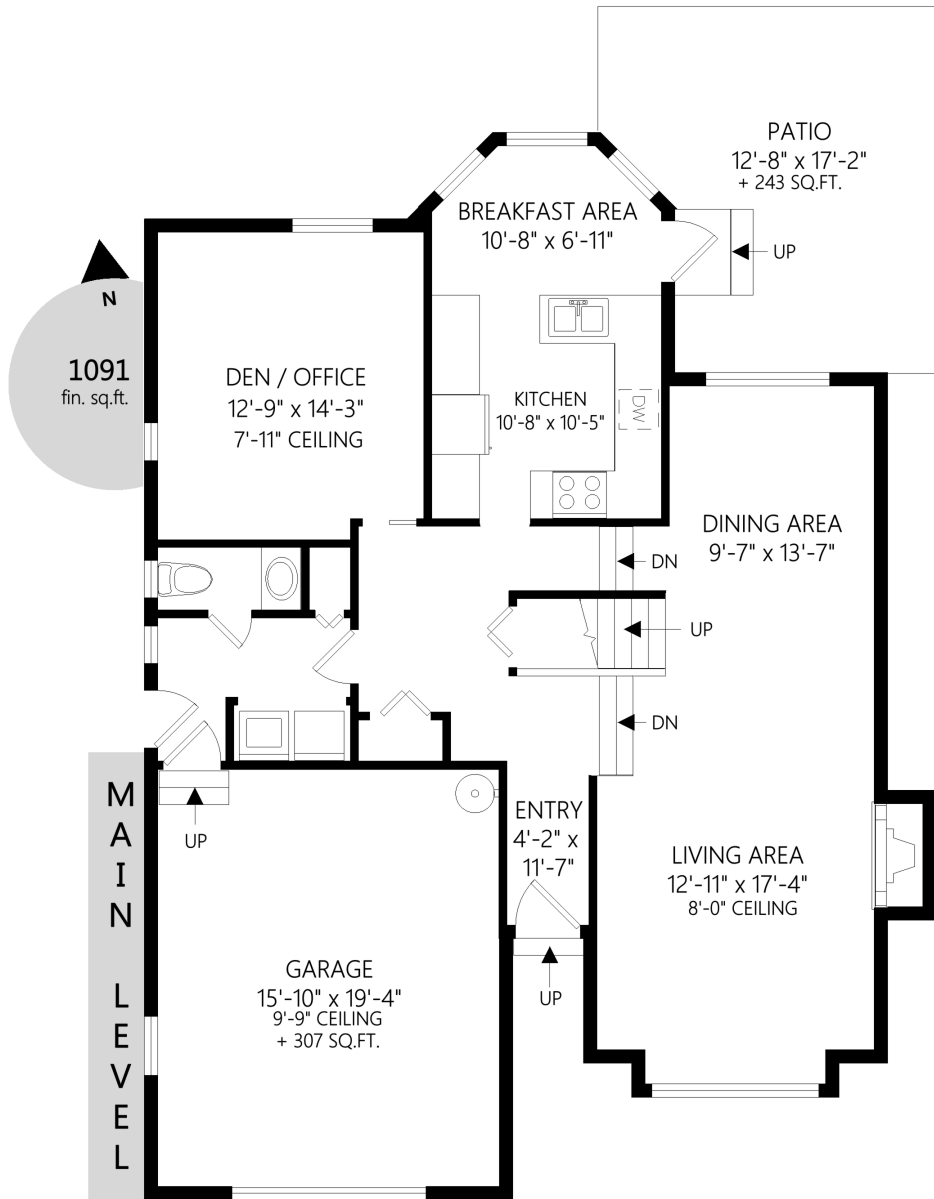




1620 Agnew Ave

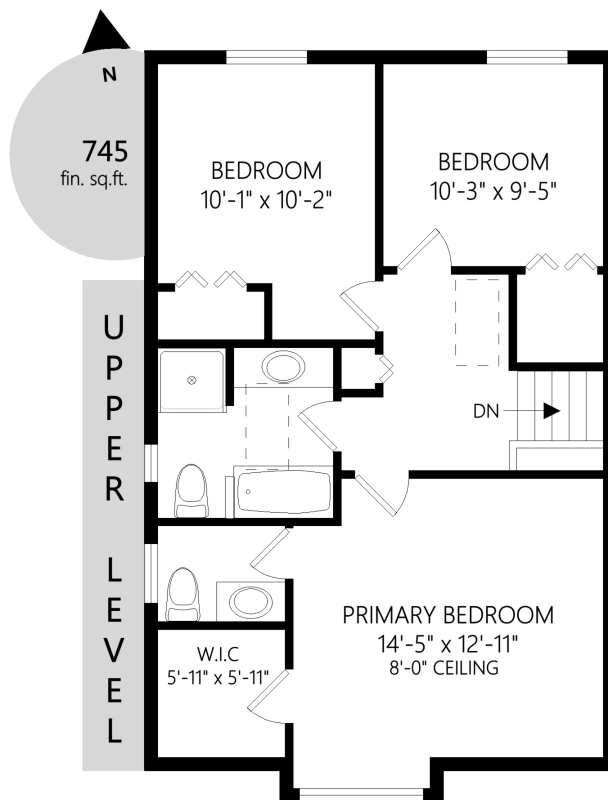


	Fin. Sq.Ft.	UnFin. Sq.Ft.	Total Sq.Ft.
Main Level	1091	0	1091
Garage	0	307	307
Upper Level	745	0	745
Outbuildings	0	0	0
<b>Total</b>	<b>1836</b>	<b>307</b>	<b>2143</b>

Shown length and width dimensions are approximate.  
 Area sq.ft. is representative of the on-site measurements. (1" accuracy)



1620 Agnew Ave



	Fin. Sq.Ft.	UnFin. Sq.Ft.	Total Sq.Ft.
Main Level	1091	0	1091
Garage	0	307	307
Upper Level	745	0	745
Outbuildings	0	0	0
<b>Total</b>	<b>1836</b>	<b>307</b>	<b>2143</b>

Shown length and width dimensions are approximate.  
 Area sq.ft. is representative of the on-site measurements. (1" accuracy)

**Mike Vanderkruyk**  
 Personal Real Estate Corporation  
 REALTOR®



Helping You is What I Do!



mikevdk@royallepage.ca    http://www.marketvictoria.com  
 Direct: (250) 588-1979    Office: (250) 592-4422    Fax: (250) 592-6600

1620 Agnew Ave

SHED  
 9'-6" x 5'-8"  
 + 66 SQ.FT.

	Fin. Sq.Ft.	UnFin. Sq.Ft.	Total Sq.Ft.
Main Level	1091	0	1091
Garage	0	307	307
Upper Level	745	0	745
Outbuildings	0	0	0
<b>Total</b>	<b>1836</b>	<b>307</b>	<b>2143</b>

Shown length and width dimensions are approximate.  
 Area sq.ft. is representative of the on-site measurements. (1" accuracy)

**standard**  
 standardres.ca

Figures, Calculations, and Representations are for indicative and promotional purpose only.  
 VI Standard Real Estate Services Inc. will not be liable for any damages of any kind arising from the mis-use of this information.