

\$1,225,000

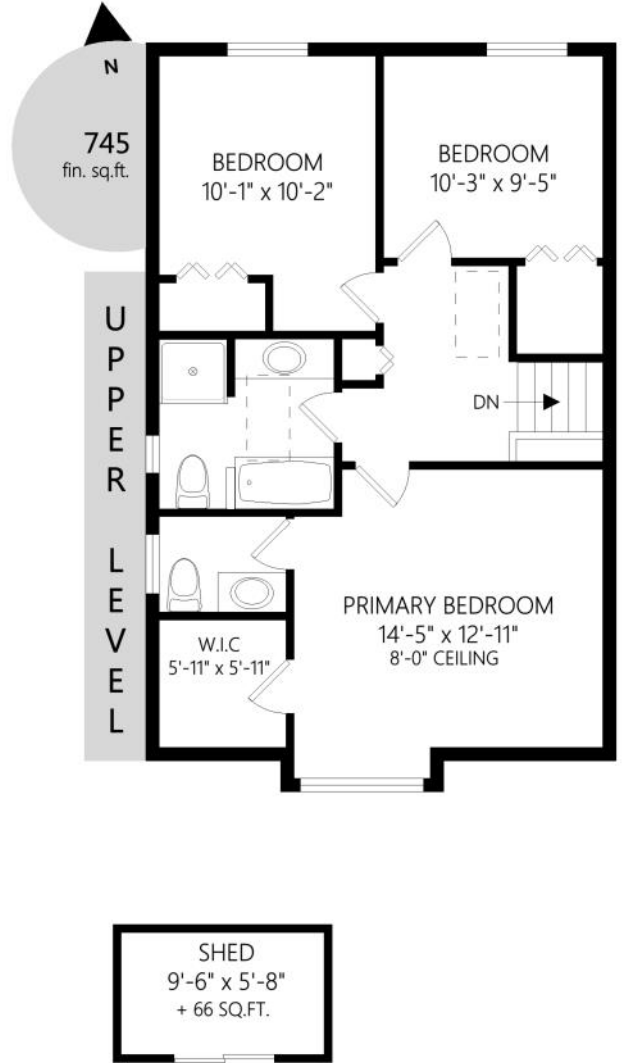
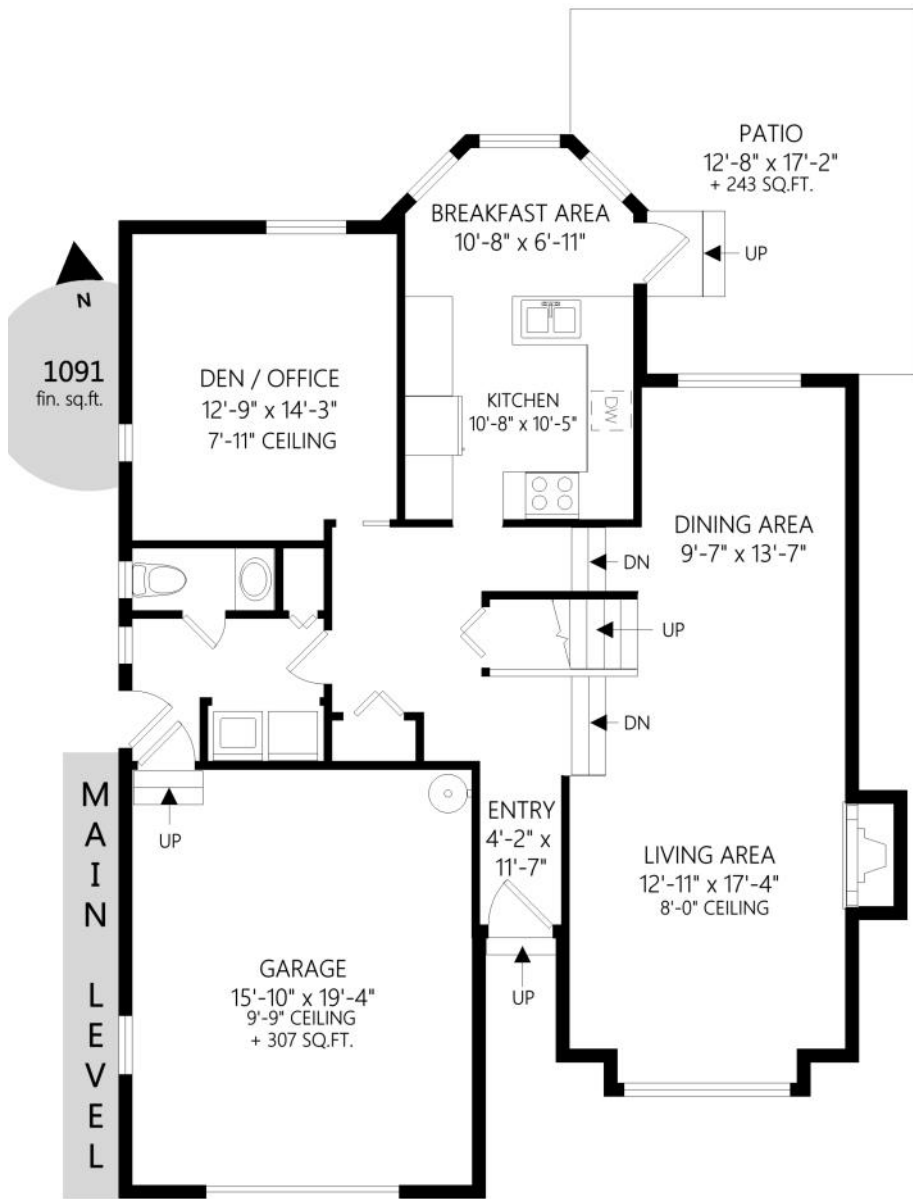
1620 Agnew Ave
 Gordon Head (Saanich), BC
 MLS® 968002

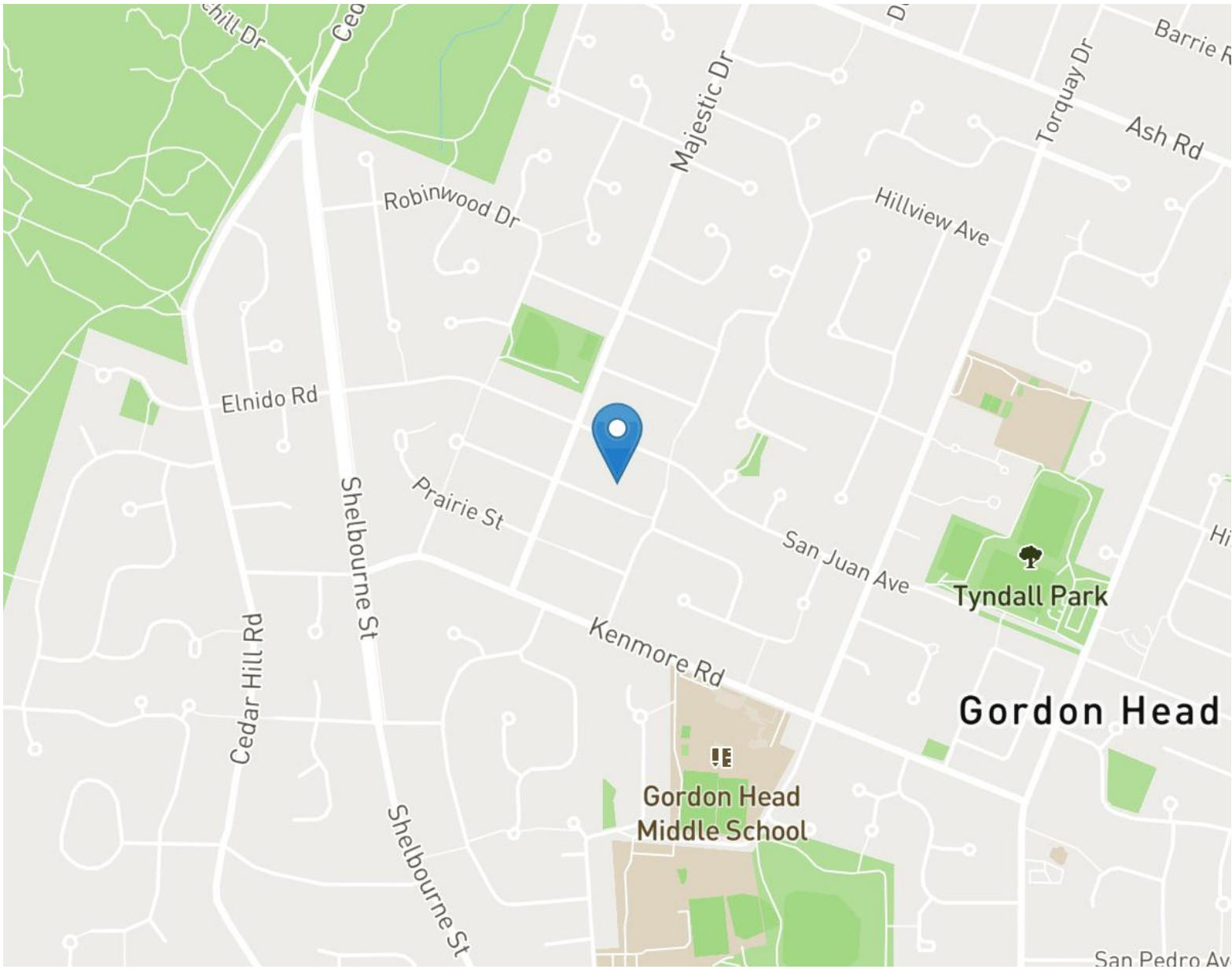
Finding your perfect home

IS WHAT I DO

Property Details

Bedrooms	3 plus den	Title	Freehold
Bathrooms	3	Heating	Baseboard Electric
Kitchens	2	Neighborhood	Saanich - Gordon Head
Lot Size	6,000 sqft	Year Built	1989
Floor Space	1,836 sqft finished + 307 unfin	Property Taxes	\$4,630.00 (2023)
Parking	Double Garage + 2 driveway	Assessment	\$1,089,000 (2024)







Gordon Head Gem!

Peaceful family friendly neighborhood

Discover the perfect family home in the Gordon Head neighborhood of Victoria, BC. This 1800 sqft single-family home boasts three bedrooms on the same level, a large den on the main, and three baths offering ample space for every family member. Nestled on a quiet cul-de-sac, this home ensures peace and safety. The fully fenced backyard is a paradise for kids, pets, and gardening enthusiasts alike. This rock solid home was built in 1988 with only one owner and regularly updated over the years. There is ample storage in the crawl space and plenty of parking in the double garage/driveway. Enjoy the convenience of being close to top-rated schools, vibrant shopping centers, beautiful beaches, and lush parks. Don't miss your chance to own this wonderful family home.

All offices are independently owned and operated, except those marked as "Royal LePage Real Estate Services Ltd., Brokerage", "Royal LePage West Real Estate Services" and "Royal LePage Sussex". Not intended to solicit currently listed properties or buyers under contract. The above information is from sources believed reliable, however, no responsibility is assumed for the accuracy of this information. ©2019 Bridgemark Real Estate Services Manager Limited. All rights reserved.



Mike Vanderkruyk

Personal Real Estate Corporation
c 250.588.1979
mikevdk@royallepage.ca

Royal LePage Coast Capital Realty
2541 Estevan Avenue
Victoria, BC V8R2S6

Scan QR code for
all photos and
multi-media

