



**\$397,500**

409-4394 West Saanich Rd  
 Victoria, BC  
 MLS® 862762

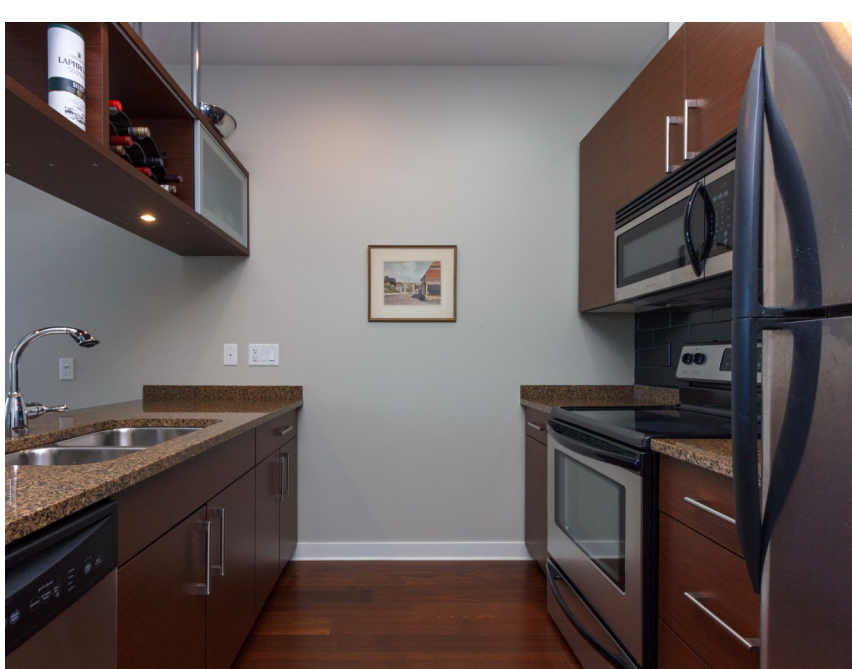
Finding your perfect home

**IS WHAT I DO**



Property Details

# Bedrooms	1	Parking Type	Secure underground
# Bathrooms	1	Building Type	Wood Frame
Monthly Fee	\$216	View	Park/Mountain
Year Built	2008	Ceiling Height	13ft living room
Floor Space	663 sqft	Property Taxes	\$1,876 (2020)
Title	Freehold/Strata	Assessment	\$378,600 (2021)



# Immaculate Condo

## Central Location!

Top floor gem with vaulted ceilings! This bright one bedroom, 1 bath condo is a must see. Granite counters, built-in surround sound, in suite laundry, secure underground parking, storage locker and expansive views are just a few of the features that make this property special. It also has an amazing central location. Next door is the Royal Oak shopping center. Brydon Park is right out your front door as are biking trails, bus stops and access to the pat bay highway. Broadmead shopping center, commonwealth pool and many more amenities are at your fingertips. Centennial Walk is a well-maintained pet friendly building that allows kids and rentals. Viewings are available by appointment.

All offices are independently owned and operated, except those marked as "Royal LePage Real Estate Services Ltd., Brokerage", "Royal LePage West Real Estate Services" and "Royal LePage Sussex". Not intended to solicit currently listed properties or buyers under contract. The above information is from sources believed reliable, however, no responsibility is assumed for the accuracy of this information. ©2019 Bridgemark Real Estate Services Manager Limited. All rights reserved.



**Mike Vanderkruyk**

Personal Real Estate Corporation  
c 250.588.1979  
mikevdk@royallepage.ca

Royal LePage Coast Capital Realty  
2541 Estevan Avenue  
Victoria, BC V8R2S6

# 409-4394 West Saanich Road

## Floor Plans

