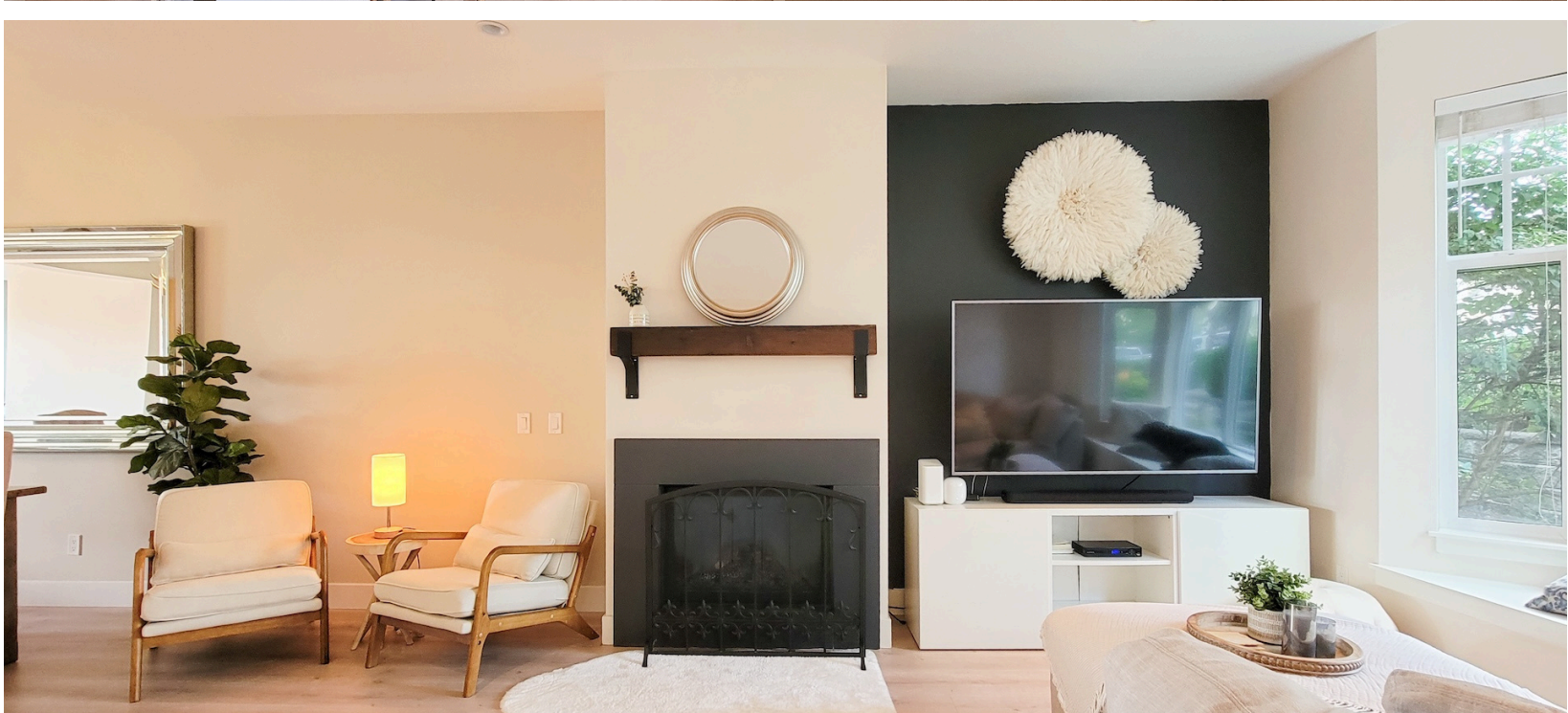
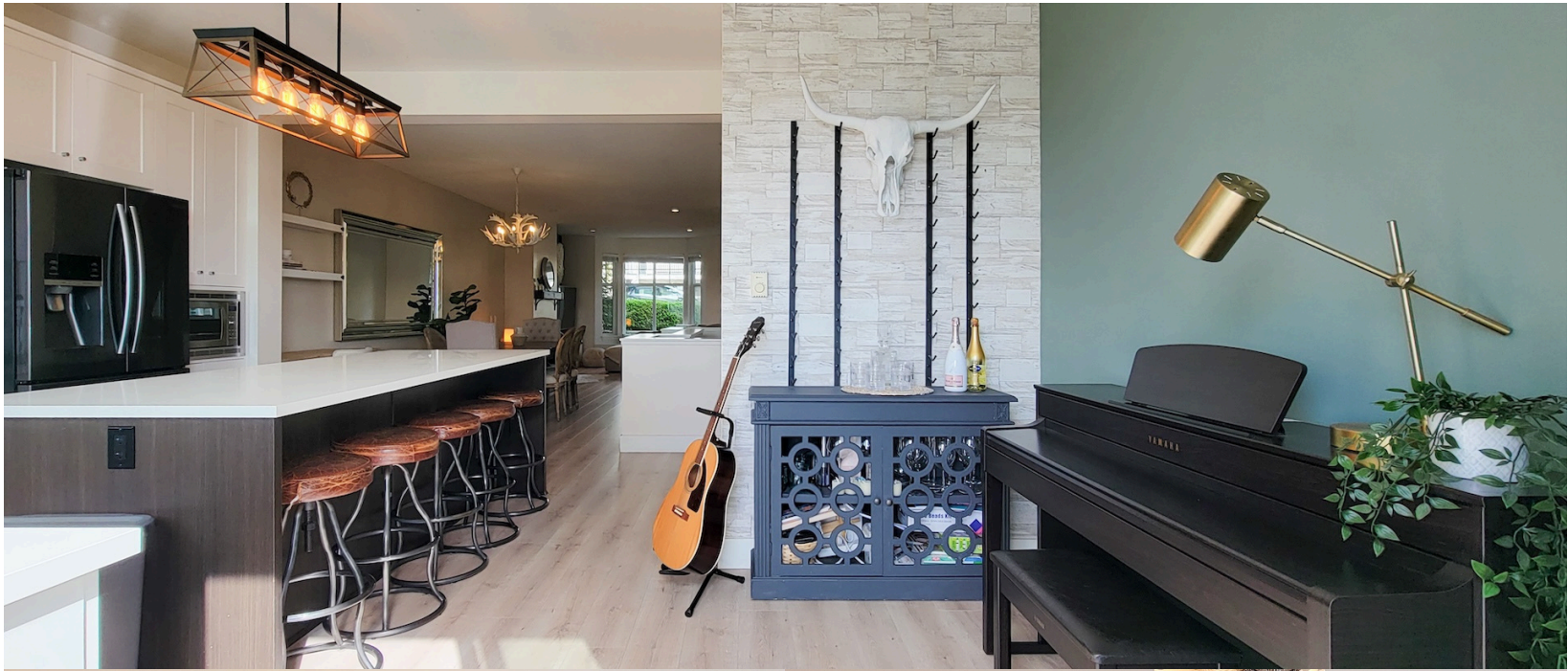


A BEAUTIFUL HOME

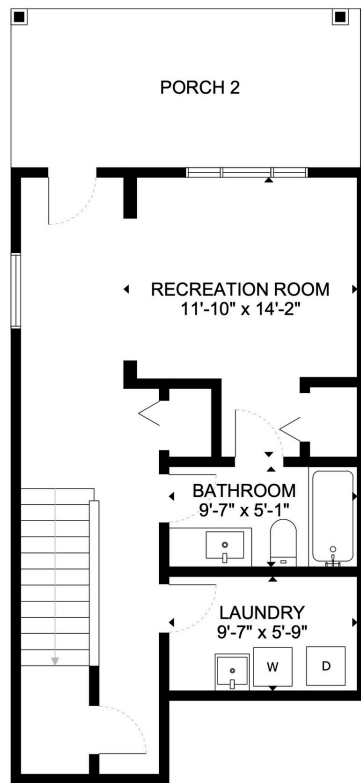
Discover this wonderfully spacious, non-strata half-duplex, ideally situated in Burke Mountain, featuring four bedrooms and four bathrooms—perfect for growing families. The main floor showcases an open layout, accentuated by large windows and high ceilings, along with a kitchen outfitted with stainless steel appliances and quartz countertops. Outdoor living is plentiful, offering a private balcony and a lower-level patio and yard.

The upper level comprises three bedrooms, including a primary suite complete with a walk-in closet and an ensuite bathroom. The lower level boasts a ceiling height of 10 feet and includes a recreation room, a fourth bedroom or versatile space, and an additional full bathroom. This property also features a detached single garage and extra parking. Enjoy convenient access to schools, trails, parks, and public transit.





4 -3432 Gislason Ave, Coquitlam



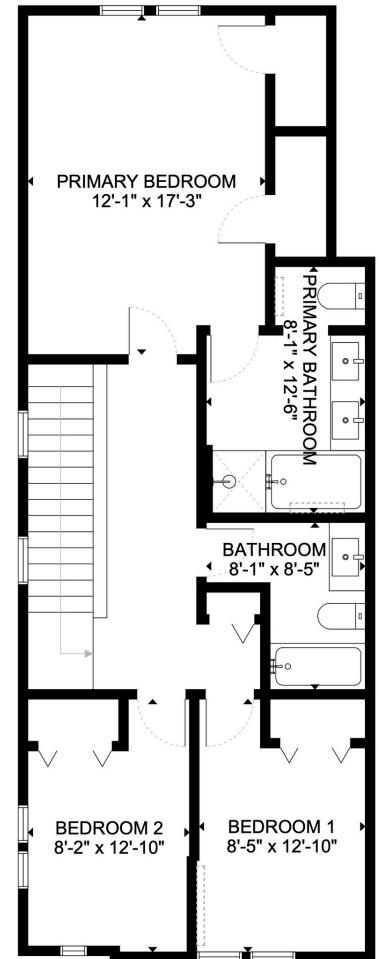
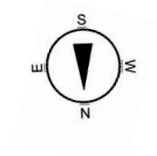
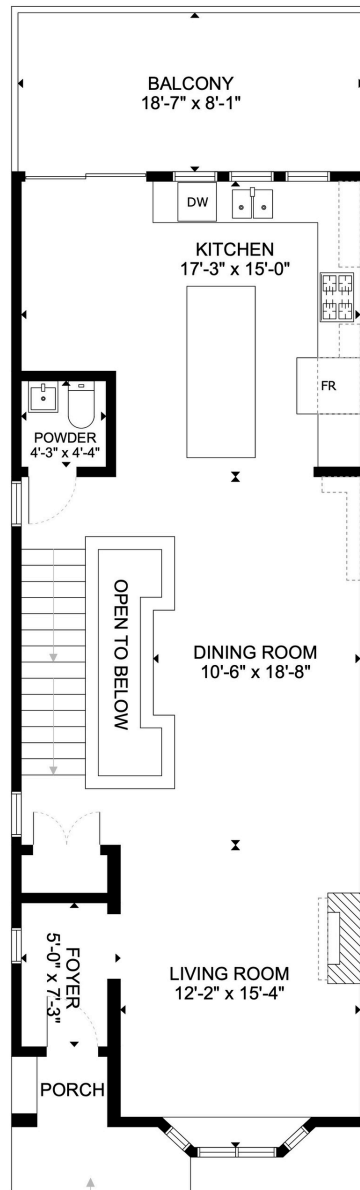
Living area

Main floor	850 sq ft
Upper floor	857 sq ft
Lower floor	525 sq ft
Total	2,232 sq ft

Outdoor area

Balcony	153 sq ft
Porch	17 sq ft
Porch 2	146 sq ft

The information contained herein while deemed to be correct, is not guaranteed. Buyers to verify.



OAKWYN REALTY

Isaac Cheung | isaac@icheung.ca | www.icheung.ca | 778.838.1105