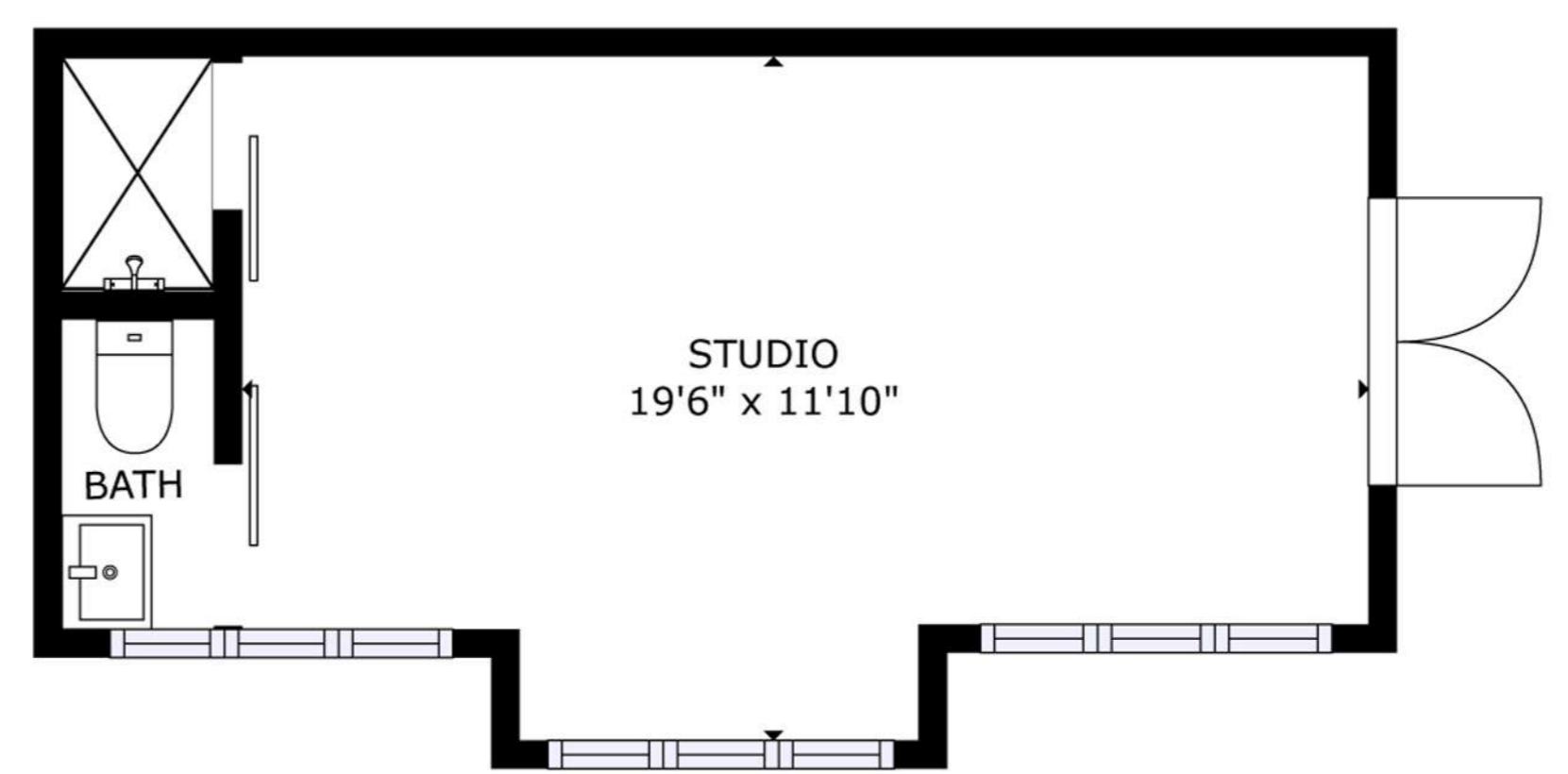


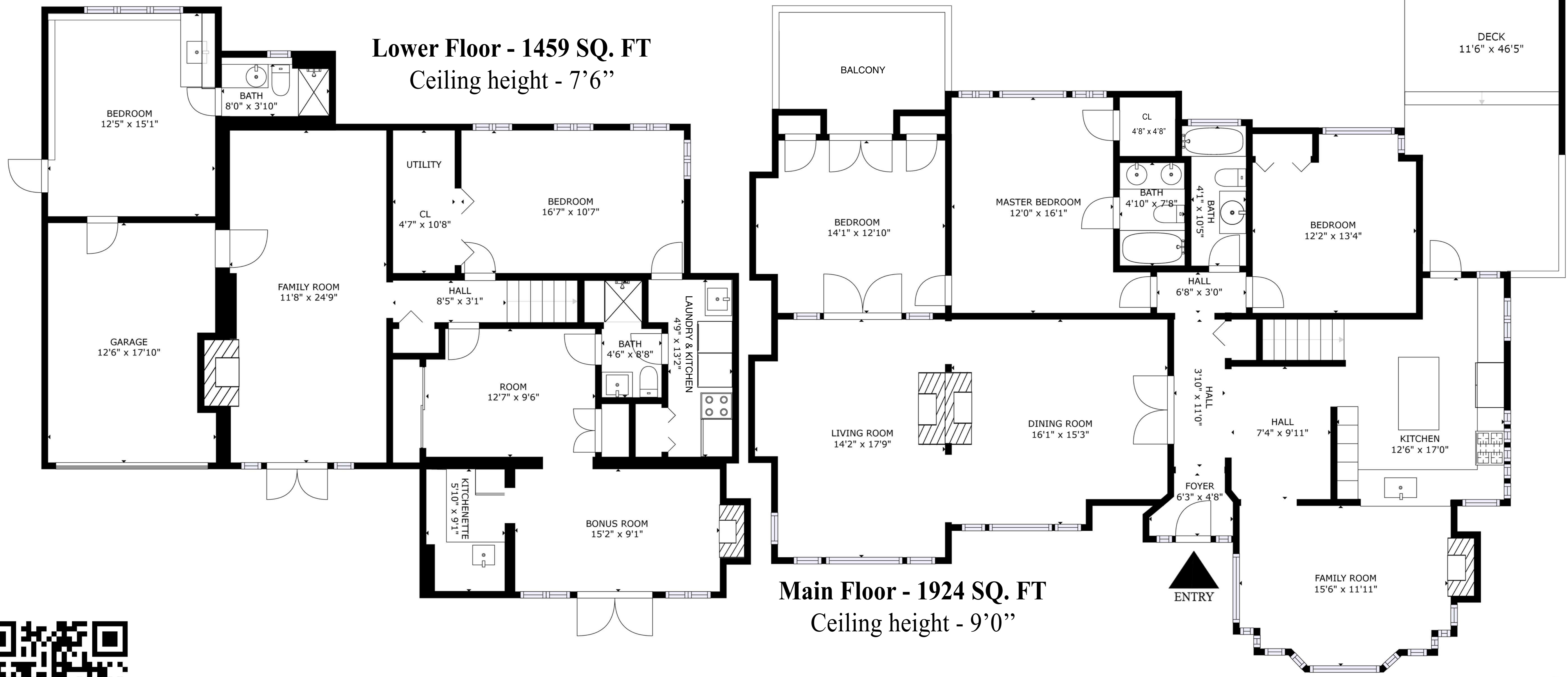
670 montroyal Blvd

| | | | |
|--------------|-------------------|--------------|------------------|
| Main Floor | 1924 SQ FT | Garage | 215 SQ FT |
| Lower Floor | 1459 SQ FT | Deck | 525 SQ FT |
| Studio | 213 SQ FT | Patio | 99 SQ FT |
| Total | 3596 SQ FT | Total | 839 SQ FT |

*Floor plans are intended to give a general indication of the proposed layout only.
 *All dimensions are not guaranteed, and are not intended to form part of any contract or warranty.



Studio - 213 SQ. FT
 Ceiling height - 9'4"



Lower Floor - 1459 SQ. FT
 Ceiling height - 7'6"

Main Floor - 1924 SQ. FT
 Ceiling height - 9'0"



Scan Barcode for
 3D Matterport Virtual Tour

