

# 11-45175 Wells Rd Chilliwack

Matt Kopan

604.807.1521

matt@kopanproperties.com

www.mattkopan.com

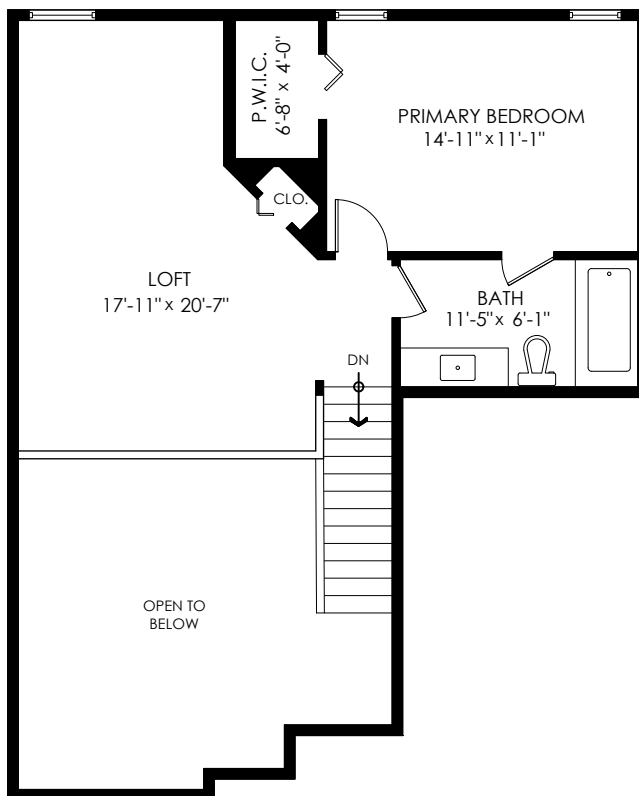


Main Floor: 1,024 sq.ft.  
Upper Floor: 656 sq.ft.  
**Total Livable: 1,680 sq.ft.**

Garage: 370 sq.ft.  
**Grand Total: 2,050 sq.ft.**

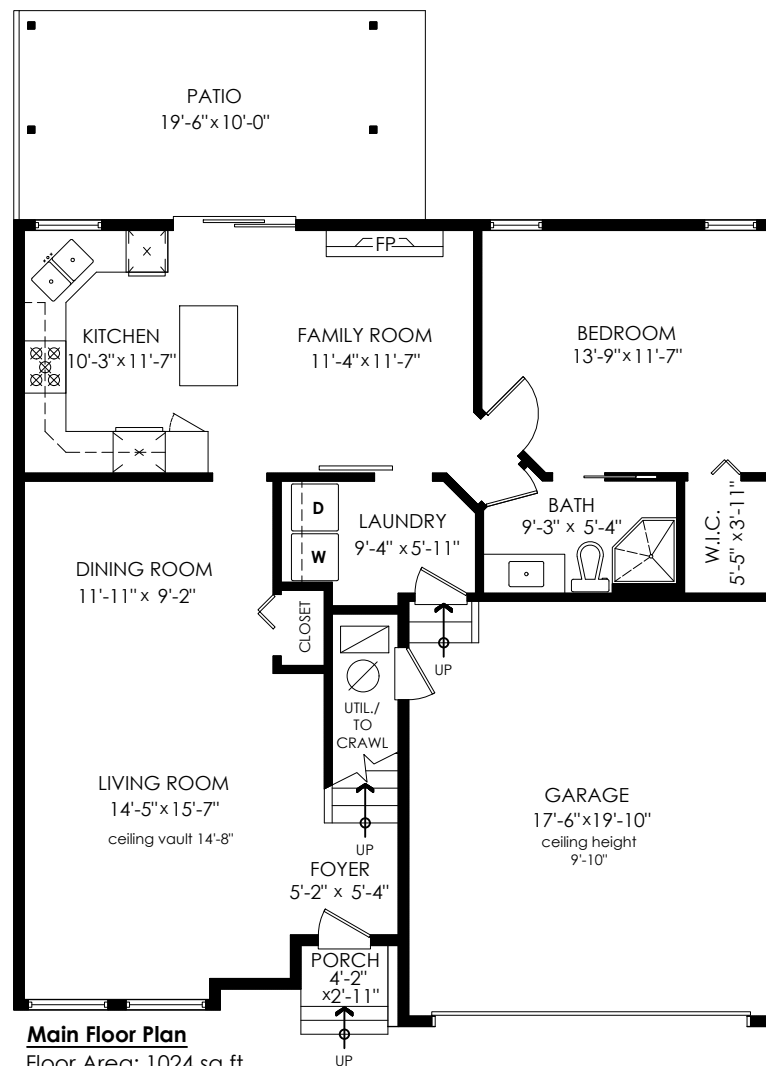
Patio: 195 sq.ft.  
Porch: 12 sq.ft.  
**Total Extras: 207 sq.ft.**

Open To Below: 259 sq.ft.



**Upper Floor Plan**

Floor Area: 656 sq.ft.  
Ceiling Height: 8'



**Main Floor Plan**

Floor Area: 1024 sq.ft.  
Ceiling Height: 8'



E&O Insured. Total square foot calculated to gross unit area. SQFT based on interior measurements to exterior walls, not taken from original blueprints, may include unfinished area. This is for marketing purposes only and is not intended for architectural/construction use. All details, sizes & placements should be considered approximate within +/- 2% tolerance.

MEASURED ON: (2024-05-01)  
[info@pixlworks.com](mailto:info@pixlworks.com) [www.pixlworks.com](http://www.pixlworks.com) 604.329.5788

