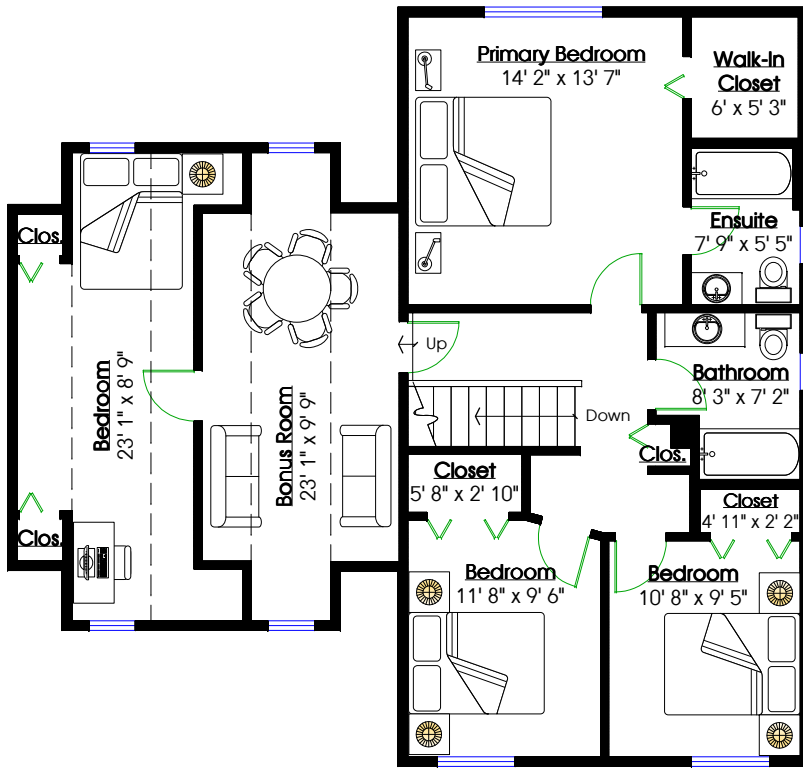


19615 Wakefield Drive, Langley, B.C.

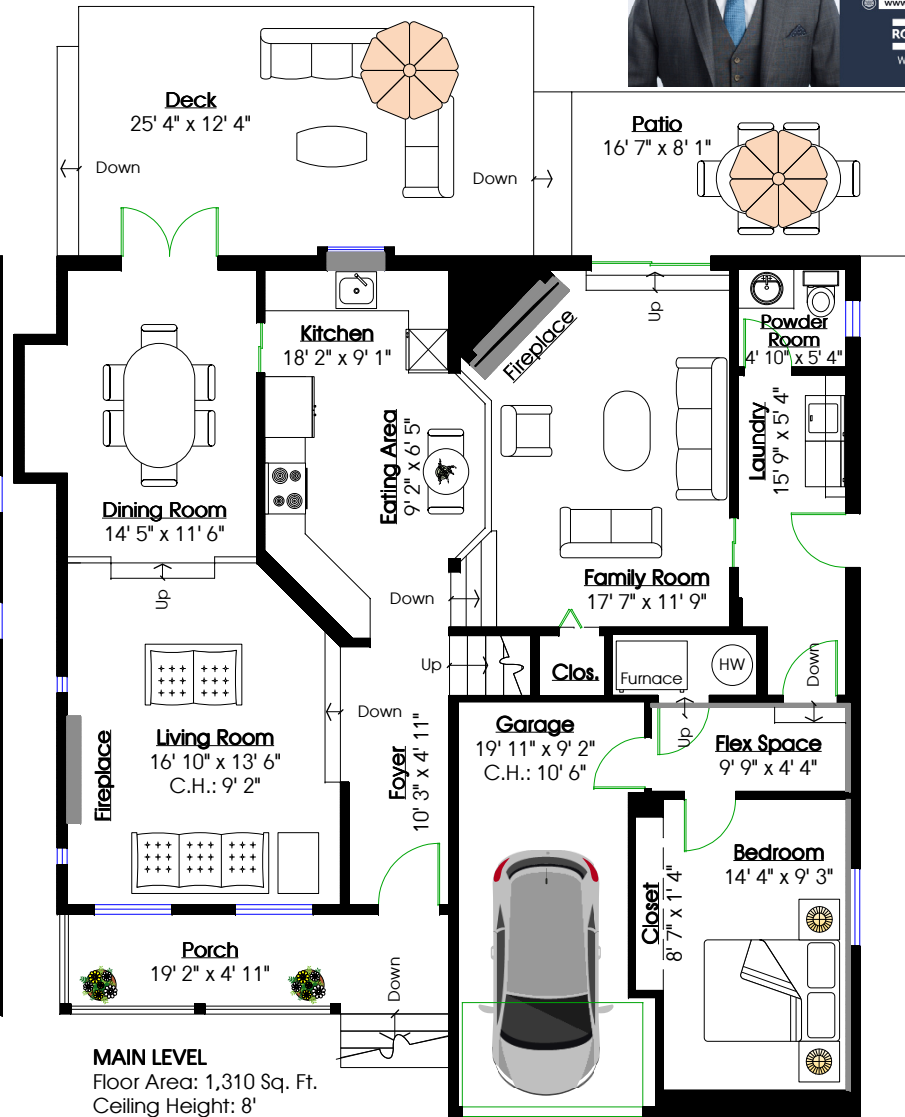
Totals**

Main Level: 1,310 sq. ft. Porch: 94 sq. ft.
 Upper Level: 1,187 sq. ft. Garage: 187 sq. ft.
 Deck: 301 sq. ft.
 Patio: 134 sq. ft.

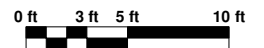
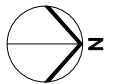
Total: 2,497 sq. ft. **Total: 716 sq. ft.**



UPPER LEVEL
 Floor Area: 1,187 Sq. Ft.
 Ceiling Height: 8'



MAIN LEVEL
 Floor Area: 1,310 Sq. Ft.
 Ceiling Height: 8'



** While all reasonable attempts have been made to ensure accuracy and the square footage and room dimensions are believed to be correct to ANSI Standards, due to the possibility of human error the information cannot be guaranteed. E&O Insured for \$1,000,000
 **Includes under height areas