

**19 - 18839 69 Avenue,  
Surrey, B.C.**

**Totals\*\***

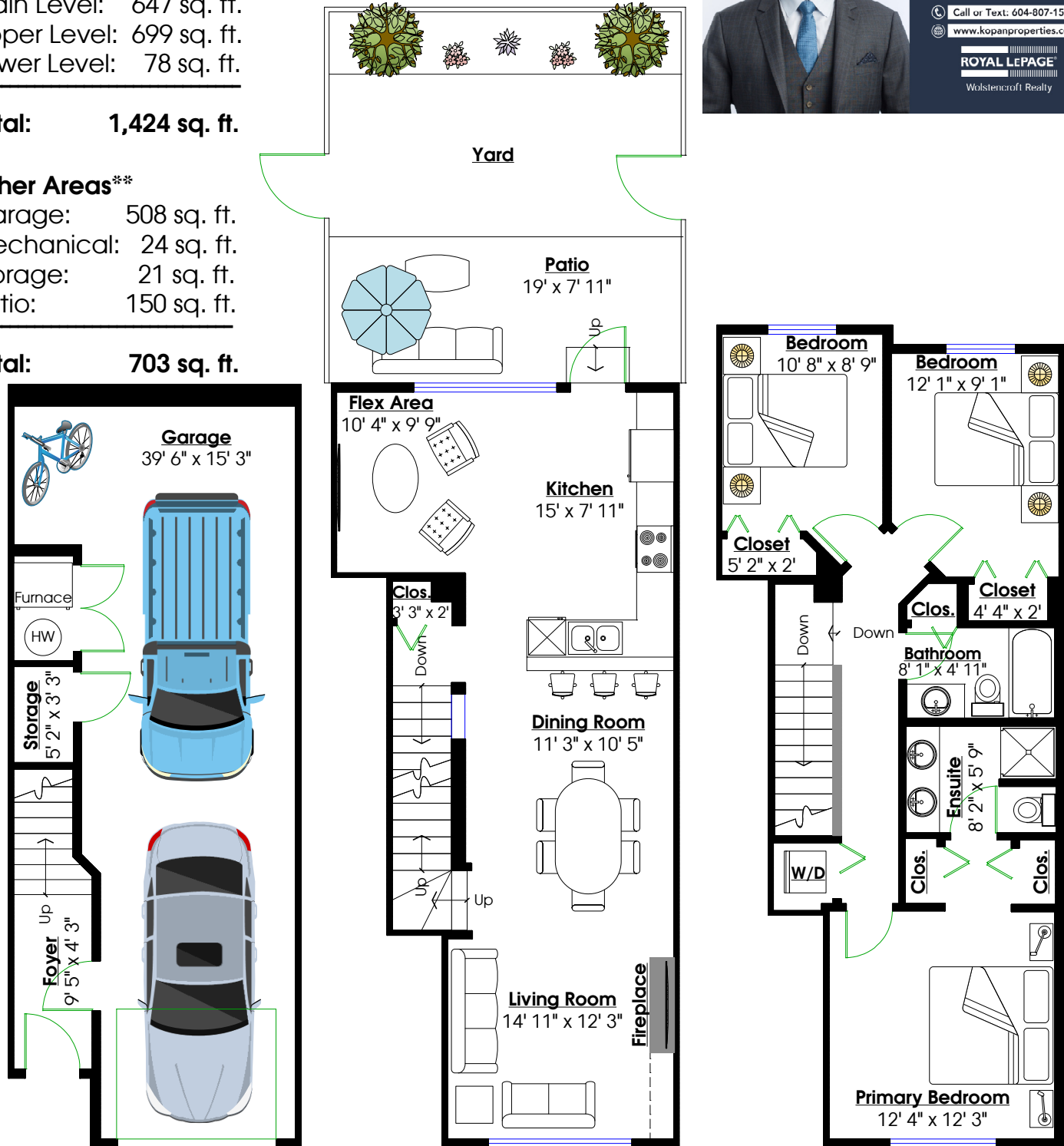
Main Level: 647 sq. ft.  
Upper Level: 699 sq. ft.  
Lower Level: 78 sq. ft.

**Total: 1,424 sq. ft.**

**Other Areas\*\***

Garage: 508 sq. ft.  
Mechanical: 24 sq. ft.  
Storage: 21 sq. ft.  
Patio: 150 sq. ft.

**Total: 703 sq. ft.**



**LOWER LEVEL**  
Floor Area: 78 Sq. Ft.  
Ceiling Height: 8'

**MAIN LEVEL**  
Floor Area: 647 Sq. Ft.  
Ceiling Height: 9'

**UPPER LEVEL**  
Floor Area: 699 Sq. Ft.  
Ceiling Height: 8'

\*\* While all reasonable attempts have been made to ensure accuracy and the square footage and room dimensions are believed to be correct to ANSI Standards, due to the possibility of human error the information cannot be guaranteed. E&O Insured for \$1,000,000

