



**Matt Kopan**

604.807.1521

matt@kopanproperties.com

www.mattkopan.com

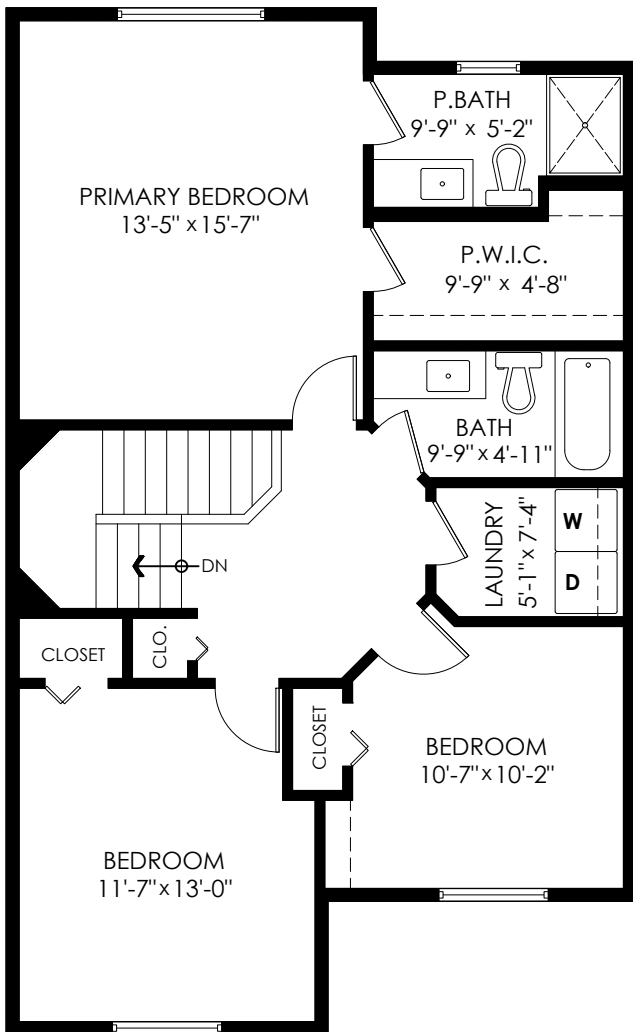
**97-46360 Valleyview Rd**

**Chilliwack**

Main Floor:	647 sq.ft.
Upper Floor:	901 sq.ft.
<b>Total Livable:</b>	<b>1,548 sq.ft.</b>

Garage:	384 sq.ft.
<b>Grand Total:</b>	<b>1,932 sq.ft.</b>

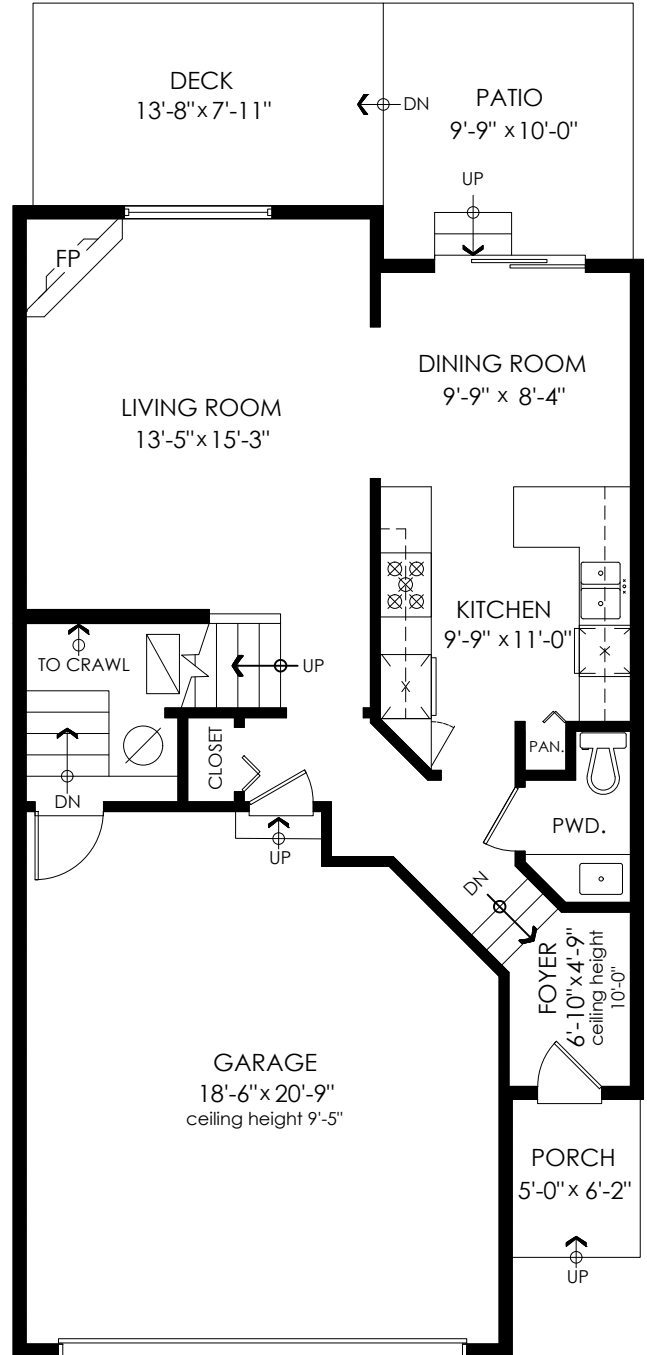
Patio:	98 sq.ft.
Deck:	108 sq.ft.
Porch:	31 sq.ft.
<b>Total Extras:</b>	<b>237 sq.ft.</b>



**Upper Floor Plan**

Floor Area: 901 sq.ft.

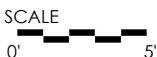
Ceiling Height: 8'



**Main Floor Plan**

Floor Area: 647 sq.ft.

Ceiling Height: 8'



**MEASURED ON: (2024-04-03)**

info@pixlworks.com www.pixlworks.com 604.329.5788



E&O Insured. Total square foot calculated to gross unit area. SQFT based on interior measurements to exterior walls, not taken from original blueprints, may include unfinished area. This is for marketing purposes only and is not intended for architectural/construction use. All details, sizes & placements should be considered approximate within +/- 2% tolerance.