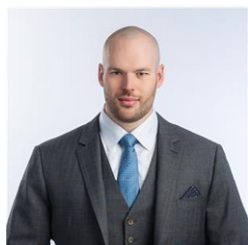
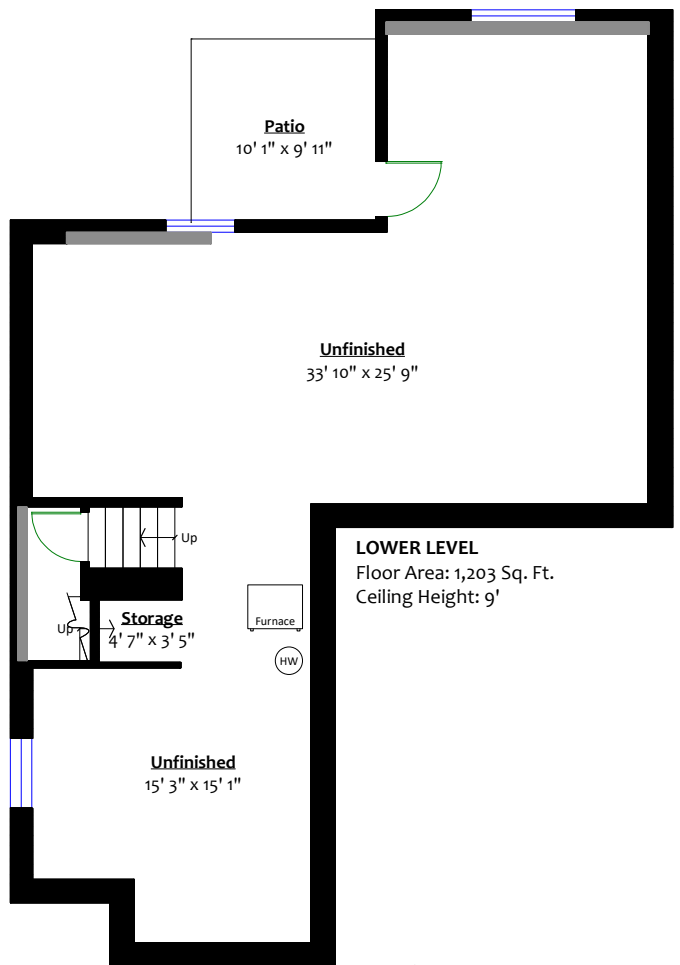
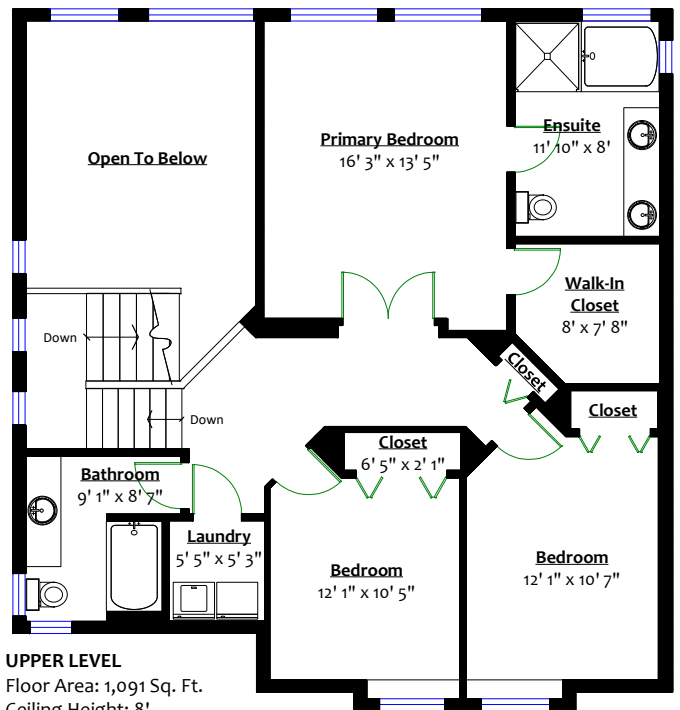
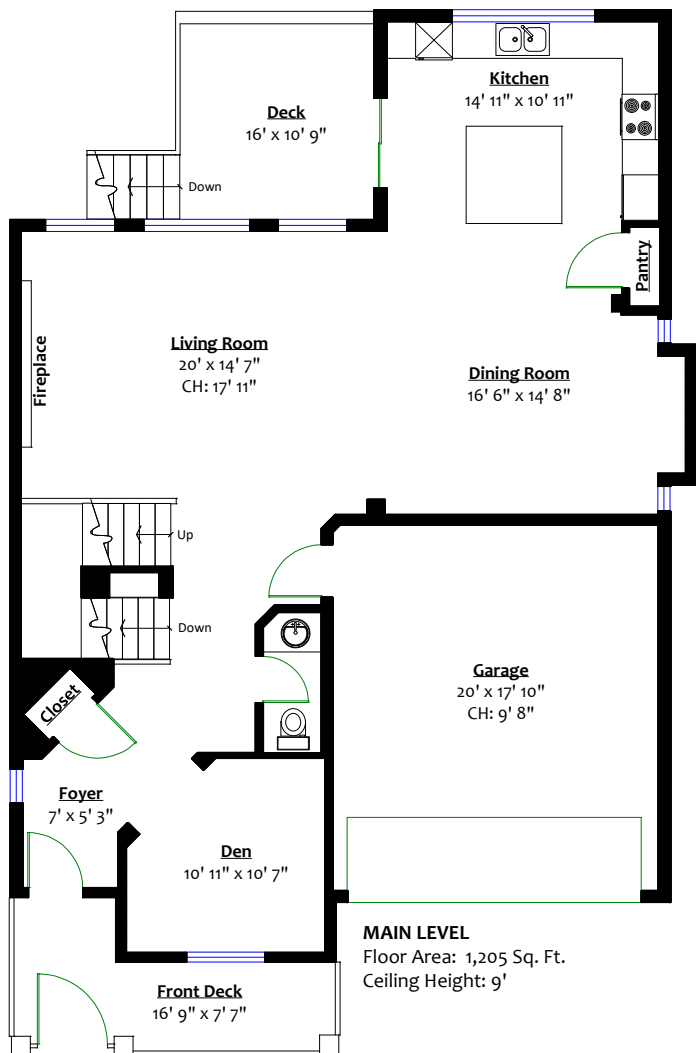


7085 178 Street, Surrey, B.C.

Totals**

Main Level:	1,205 sq. ft.	Garage:	382 sq. ft.
Upper Level:	1,091 sq. ft.	Deck:	124 sq. ft.
Lower Level:	1,203 sq. ft.	Front Deck:	111 sq. ft.
Total:	3,499 sq. ft.	Patio:	102 sq. ft.
		Total:	719 sq. ft.



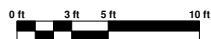
Matt Kopan

604.807.1521

matt@kopanproperties.com

ROYAL LEPAGE

Wolstencroft Realty



** While all reasonable attempts have been made to ensure accuracy and the square footage and room dimensions are believed to be correct to ANSI Standards, due to the possibility of human error the information cannot be guaranteed. E&O Insured for \$1,000,000