

39 - 7600 Blundell Road, Richmond, B.C.



Totals**

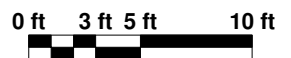
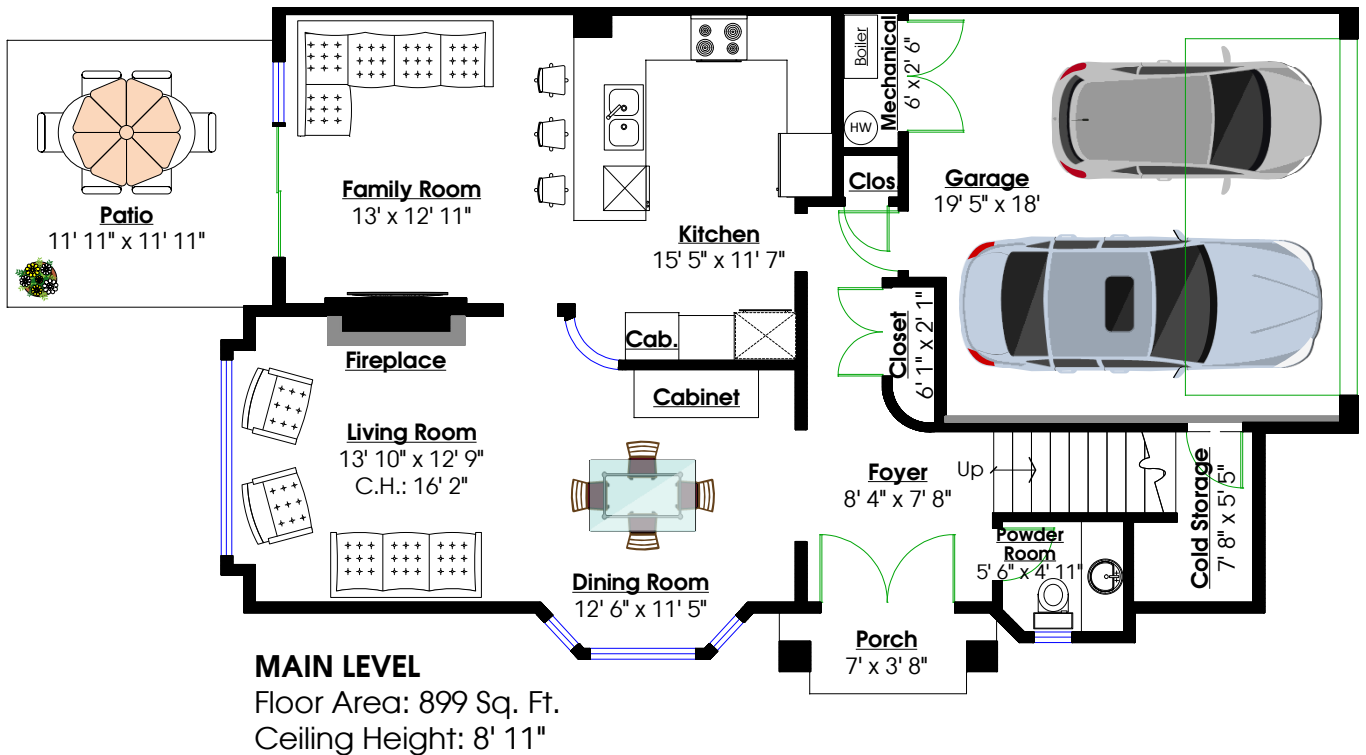
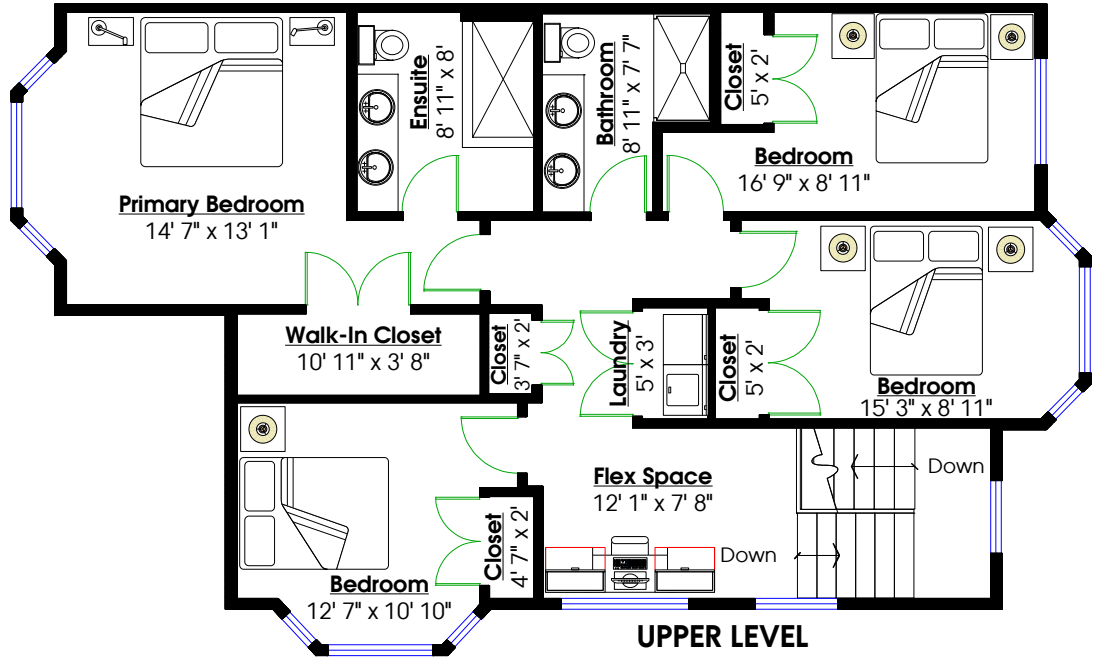
Main Level: 899 sq. ft.
Upper Level: 1,132 sq. ft.

Total: 2,031 sq. ft.

Other Areas**

Porch: 33 sq. ft.
Patio: 142 sq. ft.
Garage: 365 sq. ft.
Mechanical: 17 sq. ft.
Cold Storage: 52 sq. ft.

Total: 609 sq. ft.



** While all reasonable attempts have been made to ensure accuracy and the square footage and room dimensions are believed to be correct to ANSI Standards, due to the possibility of human error the information cannot be guaranteed. E&O Insured for \$1,000,000