

#201 - 20200 54a Avenue, Langley, B.C.

Totals**

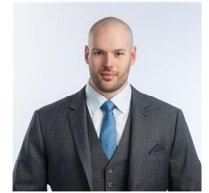
Main Level: 736 sq. ft.

Deck: 151 sq. ft.

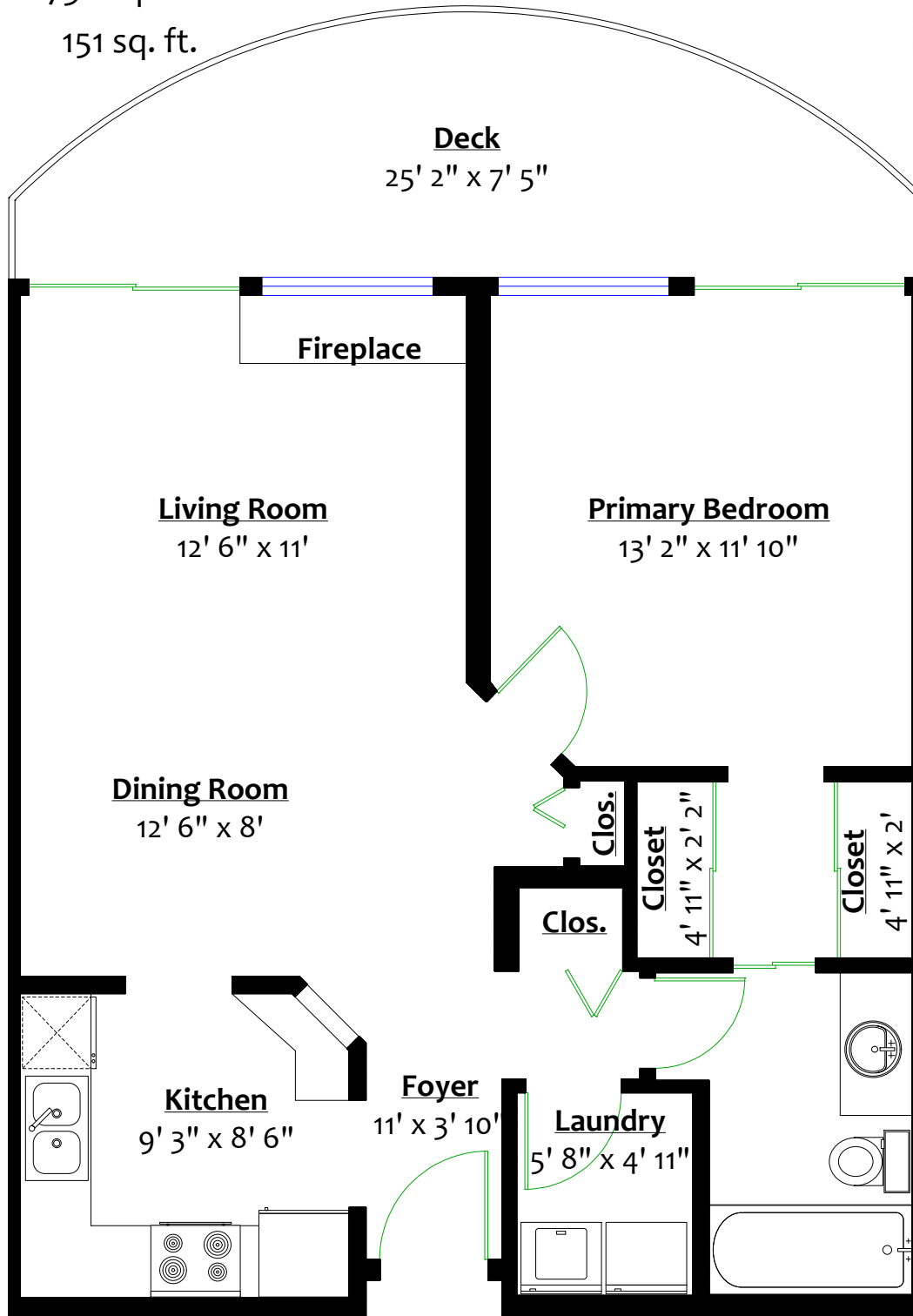
Matt Kopan

604.807.1521

matt@kopanproperties.com



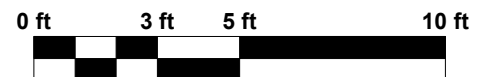
ROYAL LEPAGE
Wolstencroft Realty



MAIN LEVEL

Floor Area: 736 Sq. Ft.

Ceiling Height: 7' 10"



** While all reasonable attempts have been made to ensure accuracy and the square footage and room dimensions are believed to be correct to ANSI Standards, due to the possibility of human error the information cannot be guaranteed. E&O Insured for \$1,000,000