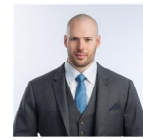


#1206 - 39 Sixth Street, New Westminster, B.C.



ROYAL LEPAGE
Wolstencroft Realty

Matt Kopan

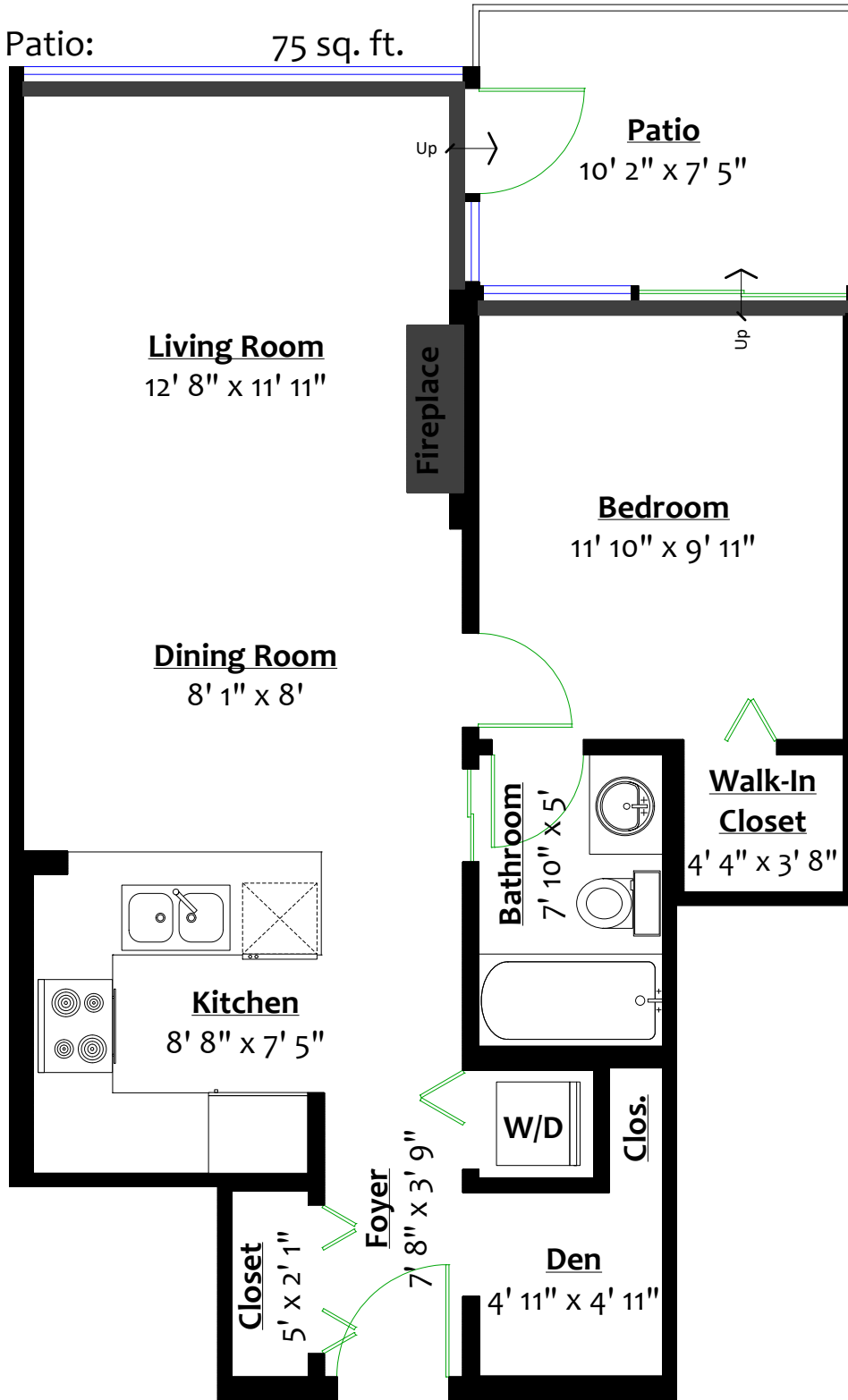
604.807.1521

matt@kopanproperties.com

Totals**

Main Level: 662 sq. ft.

Patio: 75 sq. ft.



MAIN LEVEL

Floor Area: 662 Sq. Ft.

Ceiling Height: 8'

