

PROPERTY MATRIX

2884 Sq Ft
Total Finished

404 Sq Ft
Garage

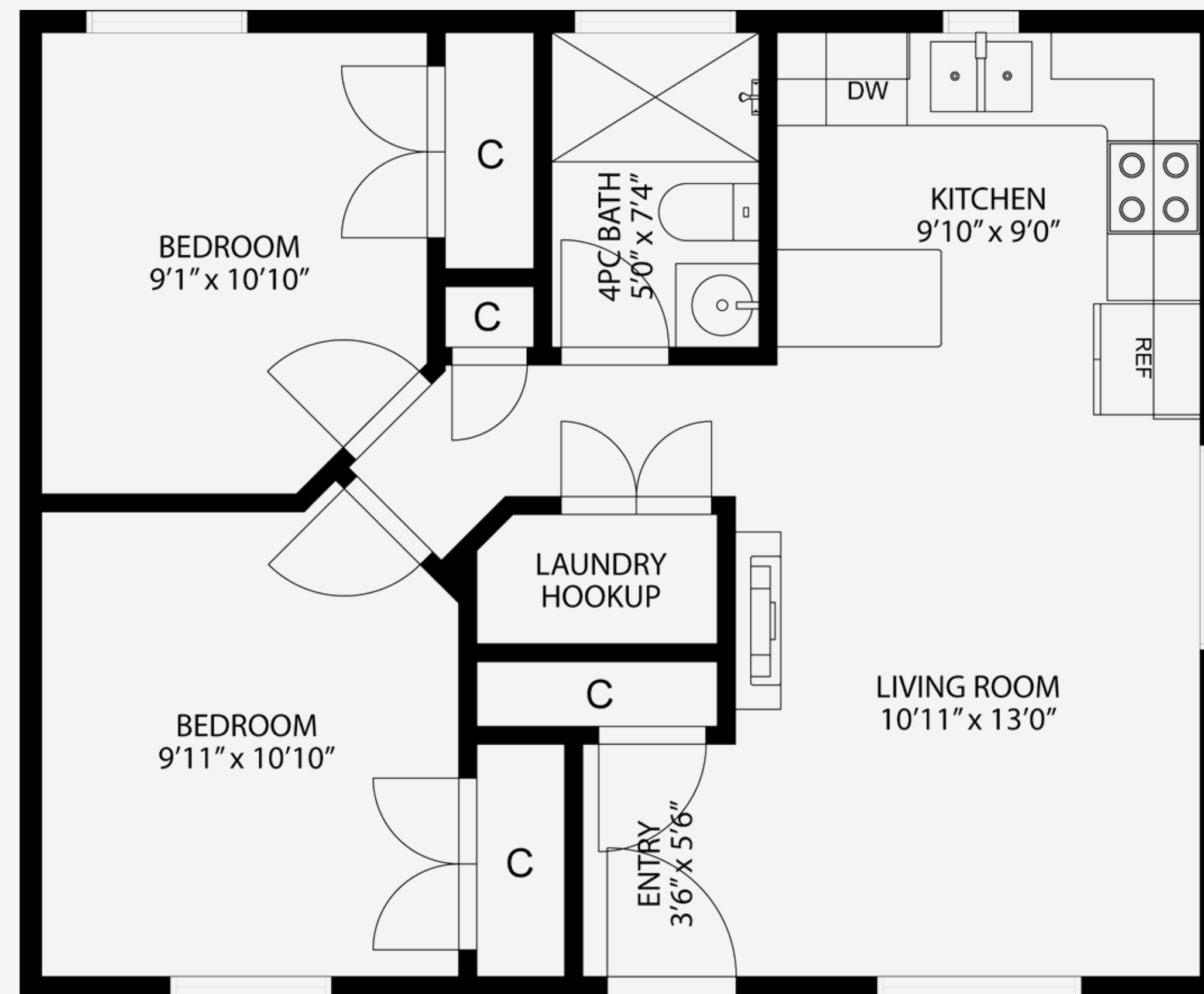
9'0"
Ceiling Height



All floor plan measurements, square footage, and drawings are approximate and provided for illustrative purposes only, and should be independently verified by the Buyer if important.

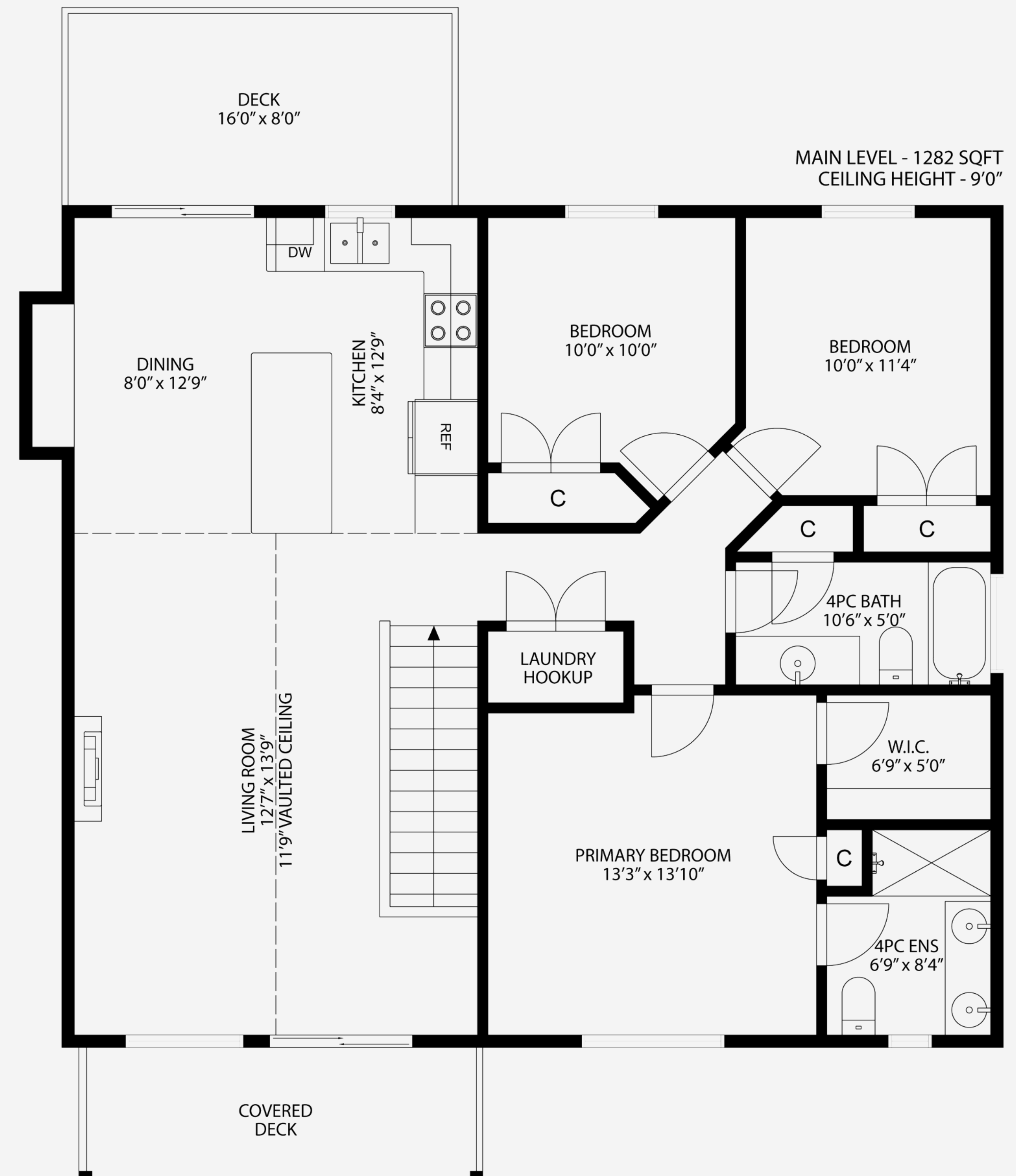
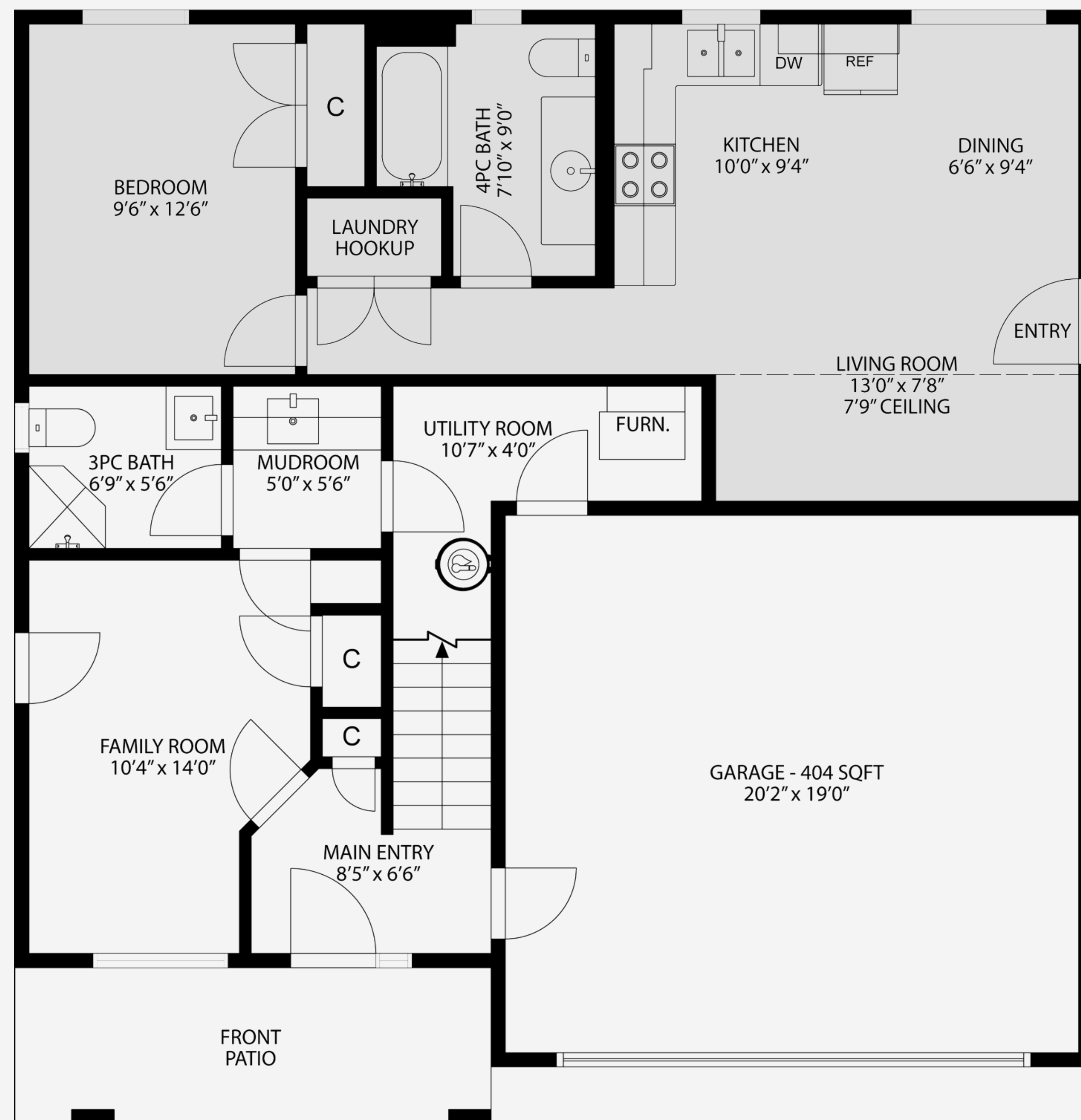
746 DOEHLE AVENUE

Total Finished Area - 2884 Sq Ft



APPURTENANT DWELLING - 644 SQFT
CEILING HEIGHT - 9'0"

LOWER LEVEL - 400 SQFT
ADDITIONAL ACCOMODATION - 558 SQFT
CEILING HEIGHT - 9'0"



MAIN LEVEL - 1282 SQFT
CEILING HEIGHT - 9'0"

GARAGE - 404 SQFT
20'2" x 19'0"