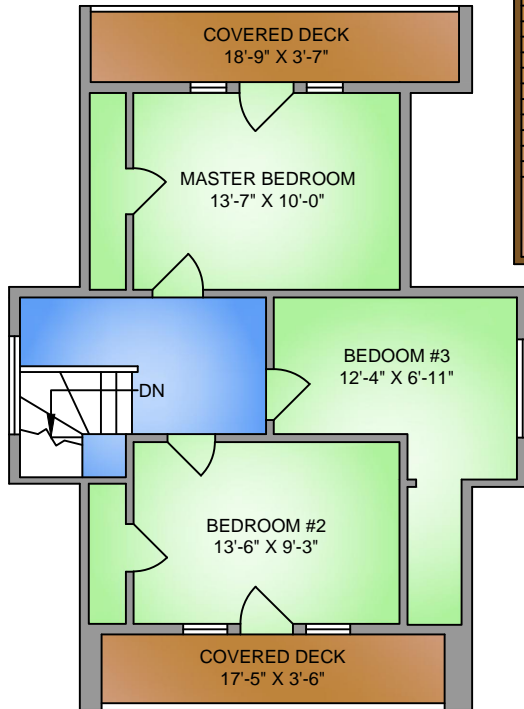
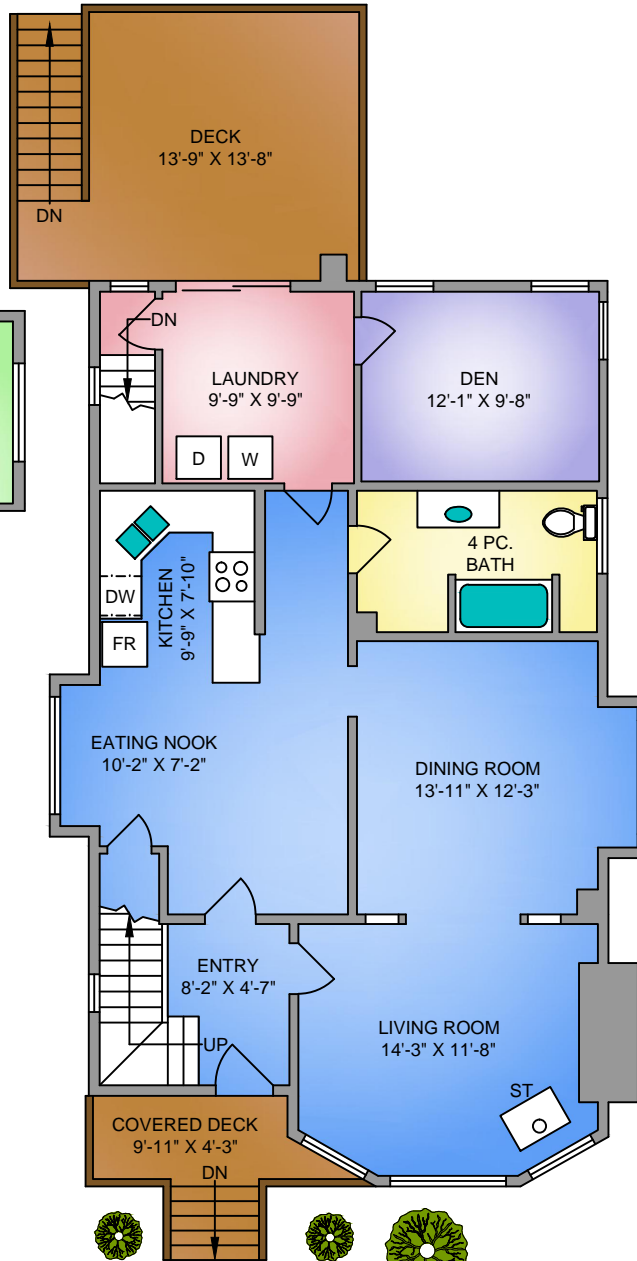


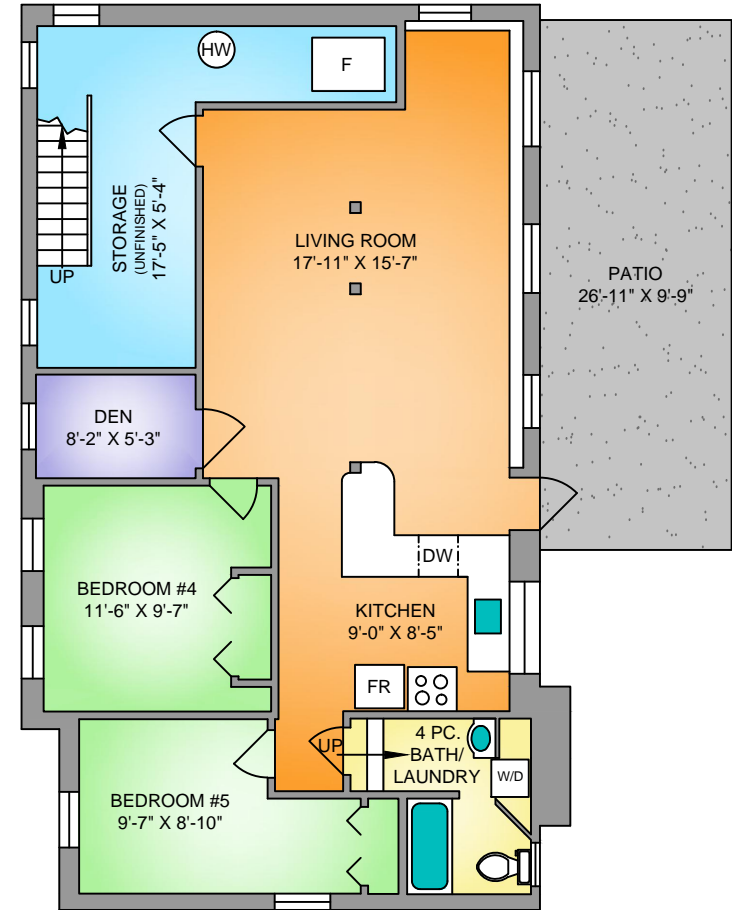
**UPPER FLOOR**  
**593 SQ. FT.**  
**8'-9" CEILING**



**MAIN FLOOR**  
**1191 SQ. FT.**  
**9'-0" CEILING**



**LOWER FLOOR**  
**983 SQ. FT.**  
**+ 214 SQ. FT. UNFINISHED**  
**7'-6" CEILING**



NORTH



0' 5' 10'  
SCALE



636 KENNEDY STREET  
OCTOBER 12, 2018

Prepared by PROPER MEASURE MID ISLAND for the exclusive use of OHS MARKETING TEAM  
Plans may not be 100% accurate. Buyer must verify any critical measurement.  
Private resale or modification of floor plans to a third party by any individual or entity other than Proper Measure Mid Island is strictly prohibited

FLOOR	AREA (SQ. FT.)		
	FINISHED	UNFINISHED	DECK / PATIO
MAIN	1191	-	248
UPPER	593	-	128
LOWER	983	214	263
<b>TOTAL</b>	<b>2767</b>	<b>214</b>	<b>248</b>