

# 203 - 1050 JERVIS STREET

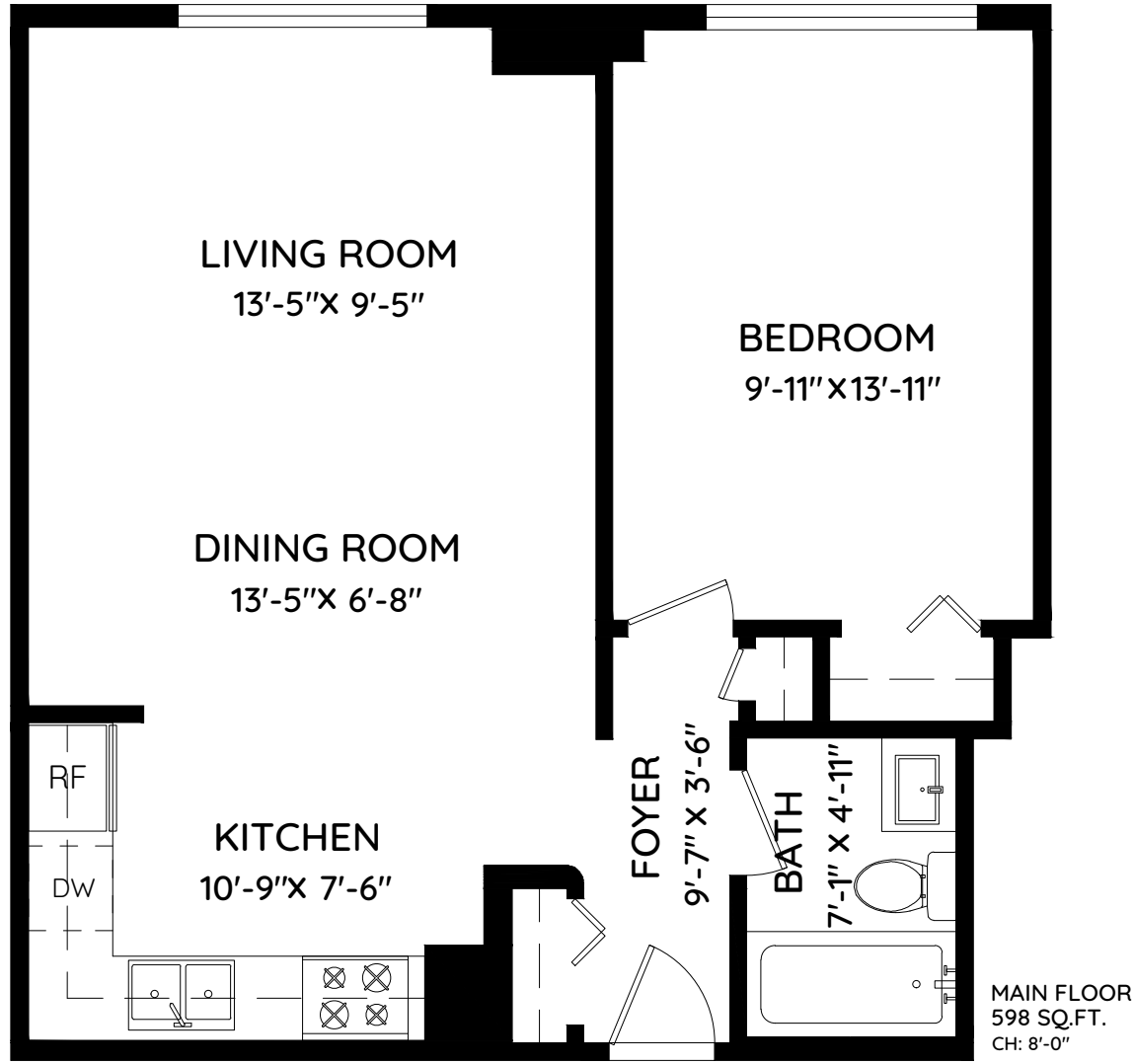
VANCOUVER, BC

## Keith Roy PREC\*

604 210 2933 | team@keithroy.com

TOTAL 598 SQ.FT.  
CEILING HEIGHT 8'-0"

0 ft 3 ft 5 ft



MAIN FLOOR  
598 SQ.FT.  
CH: 8'-0"



The floor plan and the measurements are approximate and are to be used for advertising usage only. Not suitable for architectural or construction. E&OE. © 2019 KEYPLAN Measuring Inc.



Booked on the Pixilink App™

