

3141 Point Grey Road,  
Vancouver, B.C.

Main Floor: 1,233 sq.ft.  
Upper Floor: 1,090 sq.ft.  
Lower Floor: 536 sq.ft.

**Total: 2,859 sq.ft.**

Open to Below: 86 sq.ft.

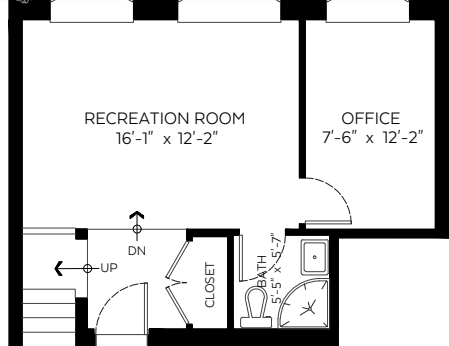
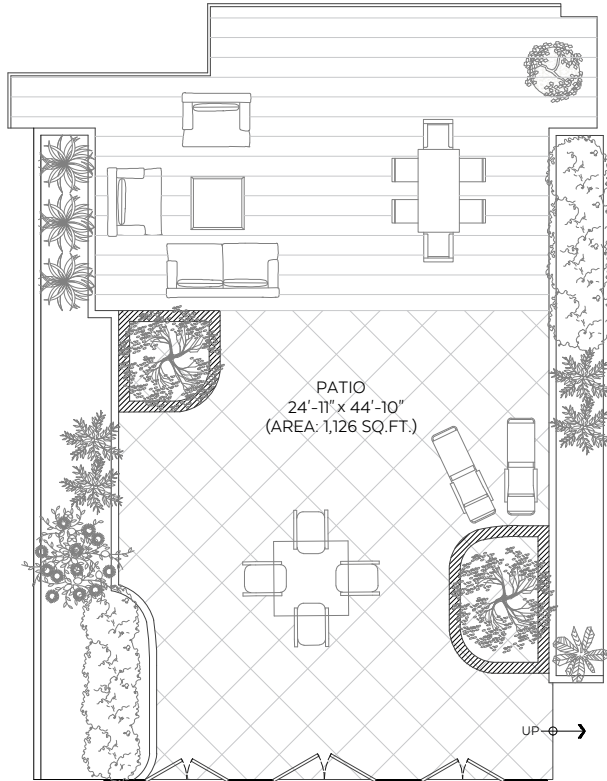
**Auxiliary Area**

Patios: 1,328 sq.ft.

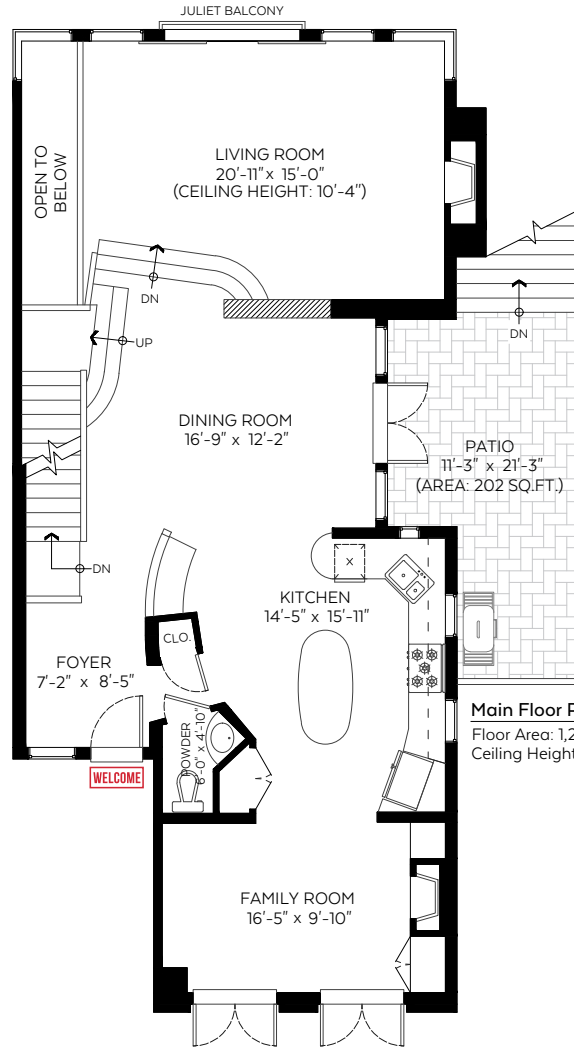
**Sotheby's** | Canada

INTERNATIONAL REALTY

MONIQUE BADUN | KIM CRAIG | VITO LONGO

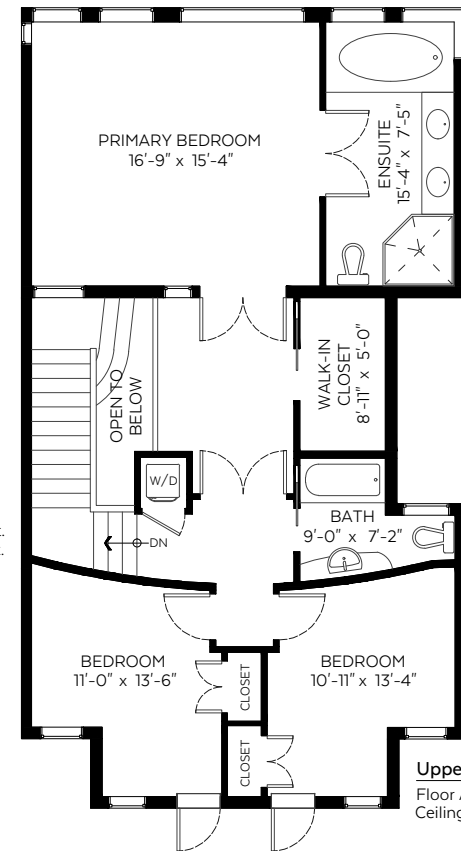


**Lower Floor Plan**  
Floor Area: 536 sq.ft.  
Ceiling Height: 8 ft.



**Main Floor Plan**  
Floor Area: 1,233 sq.ft.  
Ceiling Height: 8.75 ft.

SCALE  
0 5'



**Upper Floor Plan**  
Floor Area: 1,090 sq.ft.  
Ceiling Height: 8 ft.

Valid Until: March 12, 2024

The floor plan is not suitable for architectural/construction and is covered under E&O. © Excelsior Measuring Inc. 2023. All rights reserved for Excelsior Measuring Inc. Users shall not publish and distribute such material (in whole or in part) and/or incorporate it in other works in any form.



NORTH

