



ENGEL & VÖLKERS

MONIQUE BADUN | KIM CRAIG | VITO LONGO

3513 Point Grey Road,
Vancouver, B.C.

Main Floor:	2,118 sq.ft.
Upper Floor:	672 sq.ft.
Lower Floor:	2,165 sq.ft.

Total: 4,955 sq.ft.

Crawl Space: 197 sq.ft.

Grand Total: 5,152 sq.ft.

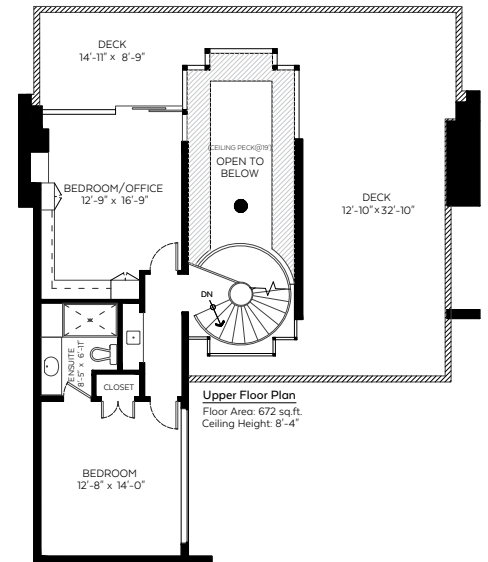
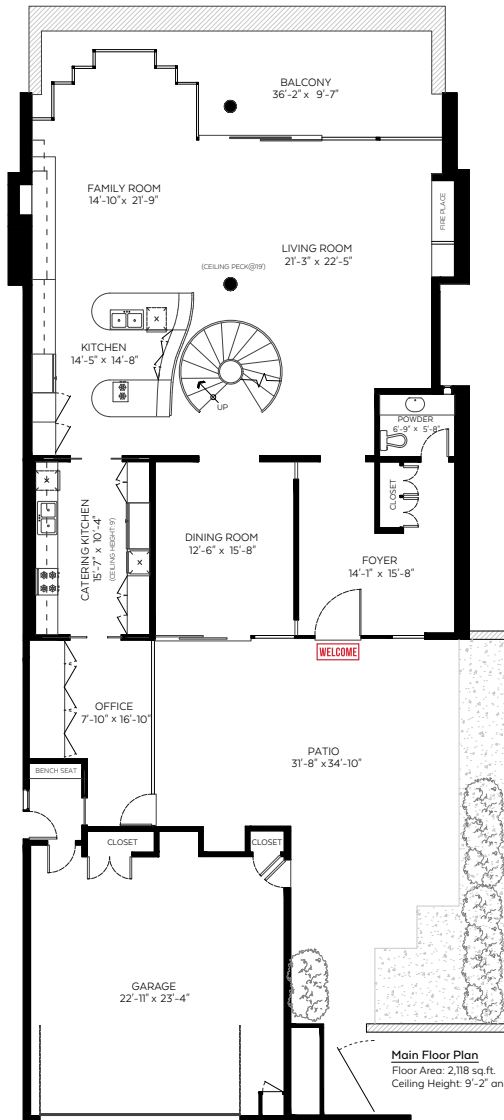
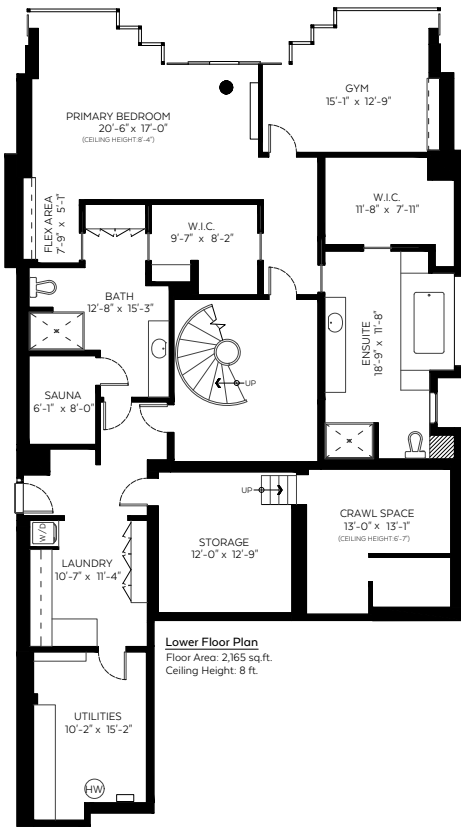
Auxiliary Area

Garage: 626 sq.ft.

Patio: 889 sq.ft.

Deck: 614 sq.ft.

Balcony: 253 sq.ft.



Valid Until: November 11, 2025

The floor plan is not suitable for architectural/construction and is covered under E&O. © Excelsior Measuring Inc. 2025. All rights reserved for Excelsior Measuring Inc. Users shall not publish and distribute such material (in whole or in part) and/or incorporate it in other works in any form.



NORTH