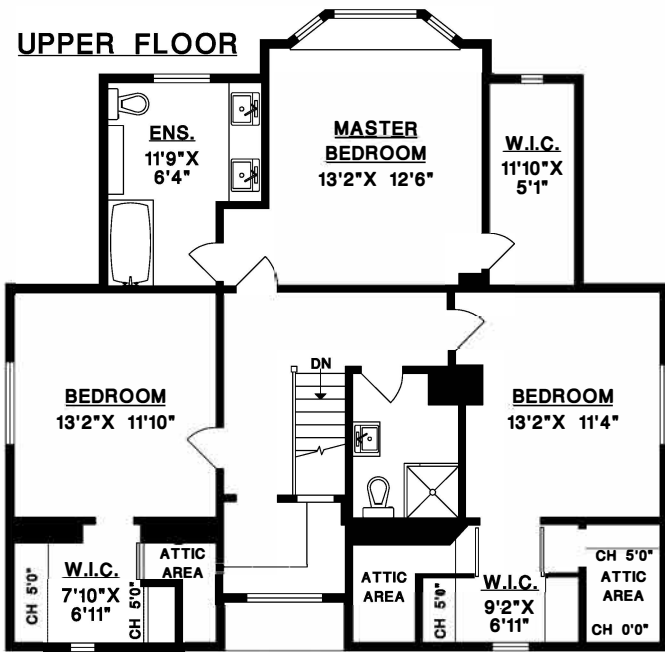


UPPER FLOOR

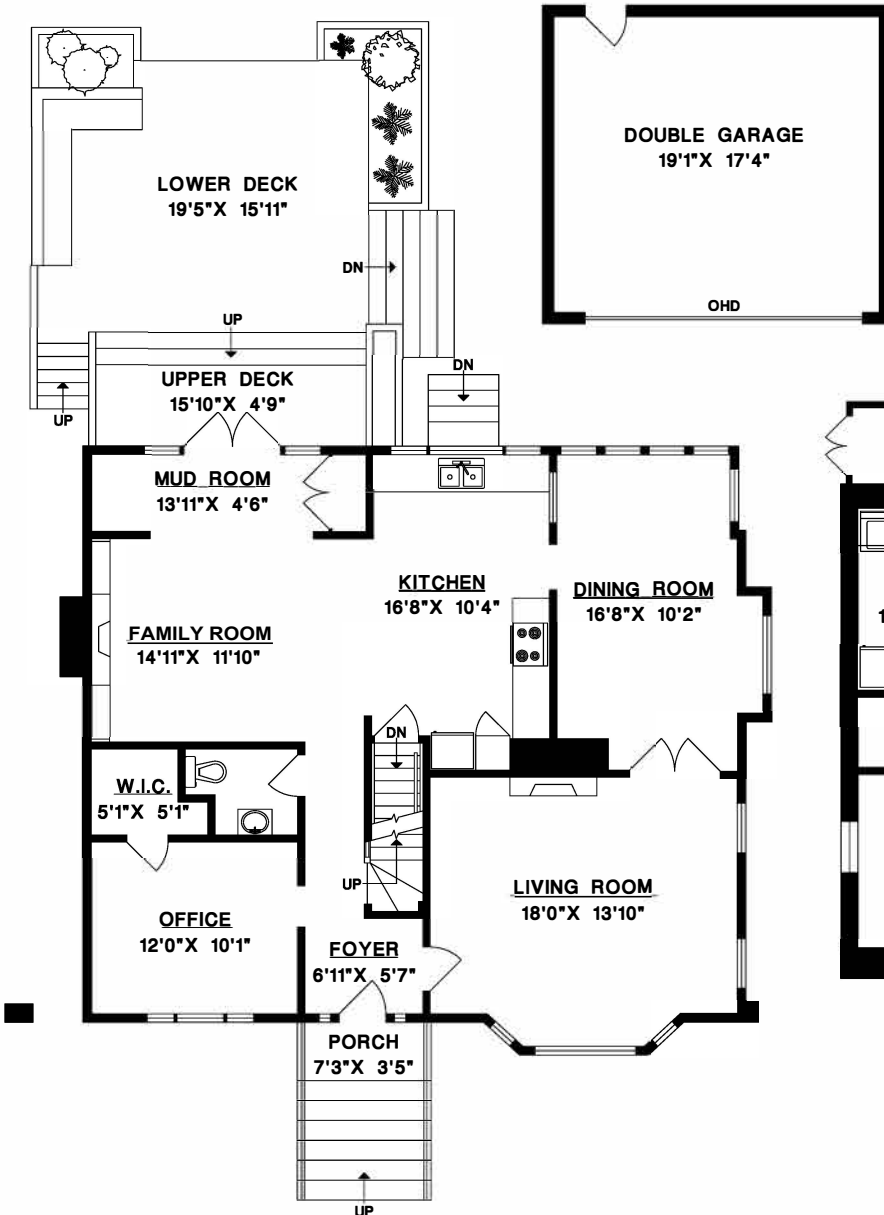


Sotheby's
 INTERNATIONAL REALTY
 Canada
 Monique Badun
 Kim Craig
 Vito Longo

**6398 ELM STREET
 VANCOUVER, B.C.**

| | | |
|--------------|-------------|----------------|
| UPPER FLOOR | 1076 | SQ. FT. |
| MAIN FLOOR | 1339 | SQ. FT. |
| BASEMENT | 1123 | SQ. FT. |
| TOTAL | 3538 | SQ. FT. |

MAIN FLOOR



| | | |
|------------|-----|---------|
| GARAGE | 381 | SQ. FT. |
| LOWER DECK | 271 | SQ. FT. |
| UPPER DECK | 75 | SQ. FT. |
| PORCH | 24 | SQ. FT. |
| SHED 1 | 79 | SQ. FT. |
| SHED 2 | 55 | SQ. FT. |
| LANDING | 56 | SQ. FT. |
| ATTIC | 112 | SQ. FT. |

BASEMENT

