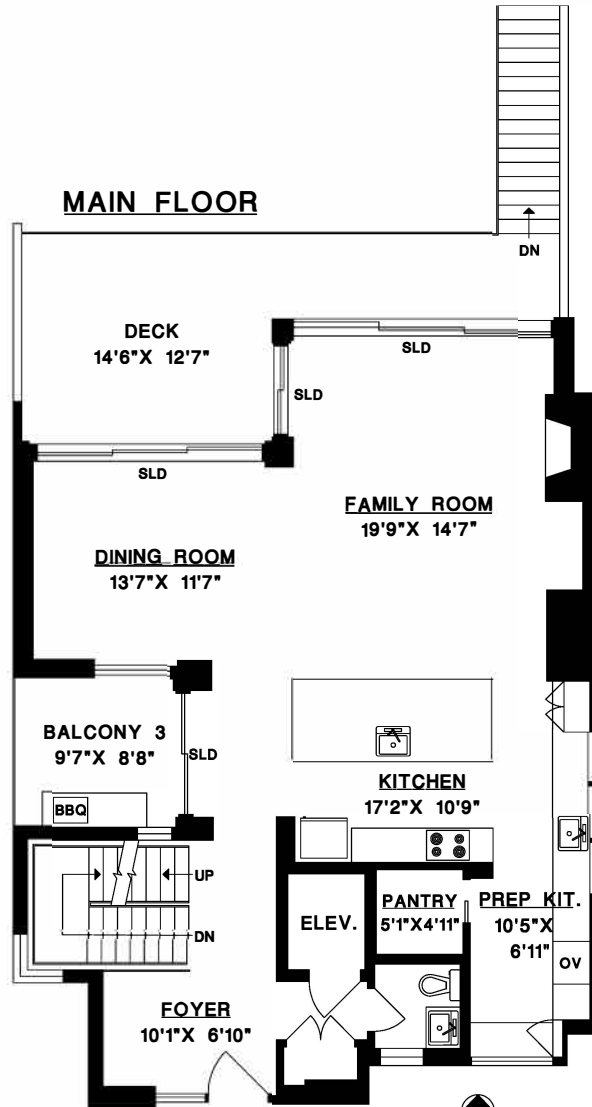
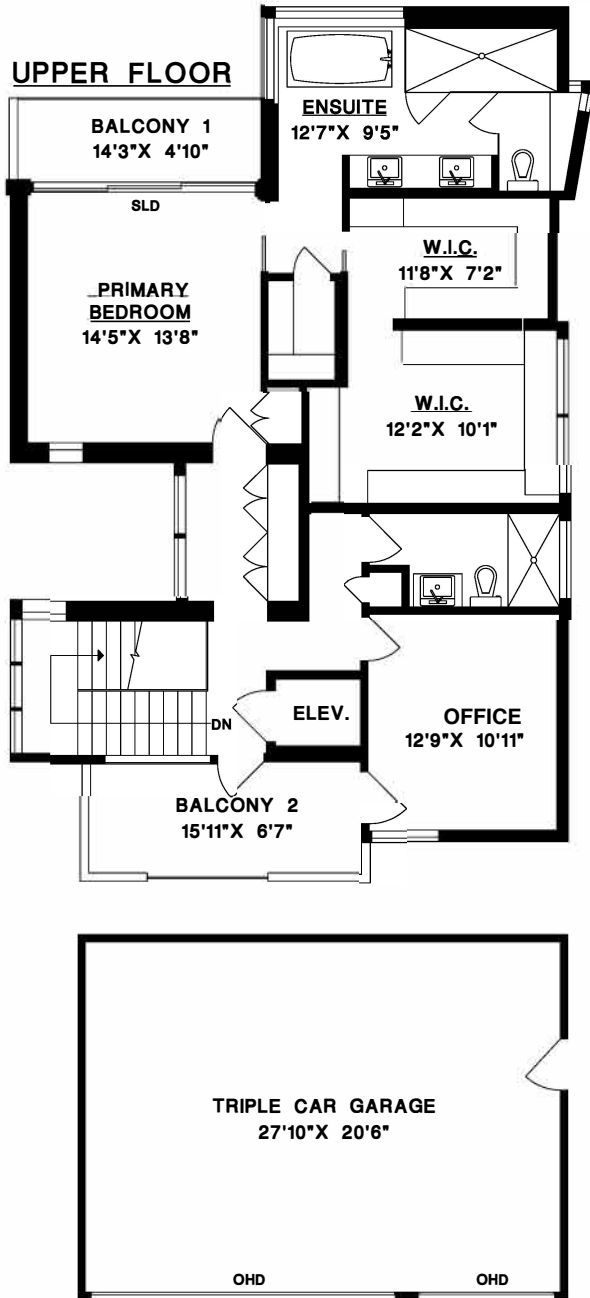


2705 W. 30TH AVE.,
VANCOUVER, B.C.



UPPER FLOOR	1275	SQ. FT.
MAIN FLOOR	1316	SQ. FT.
BASEMENT	1495	SQ. FT.
TOTAL	4086	SQ. FT.

GARAGE	612	SQ. FT.
BALCONY 1	69	SQ. FT.
BALCONY 2	105	SQ. FT.
BALCONY 3	82	SQ. FT.
DECK	265	SQ. FT.

