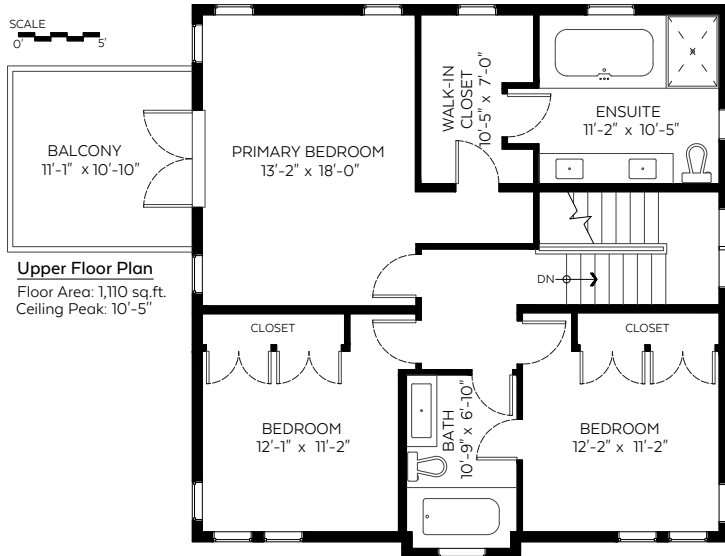


1851 Adelaide Road,
Vancouver, B.C.

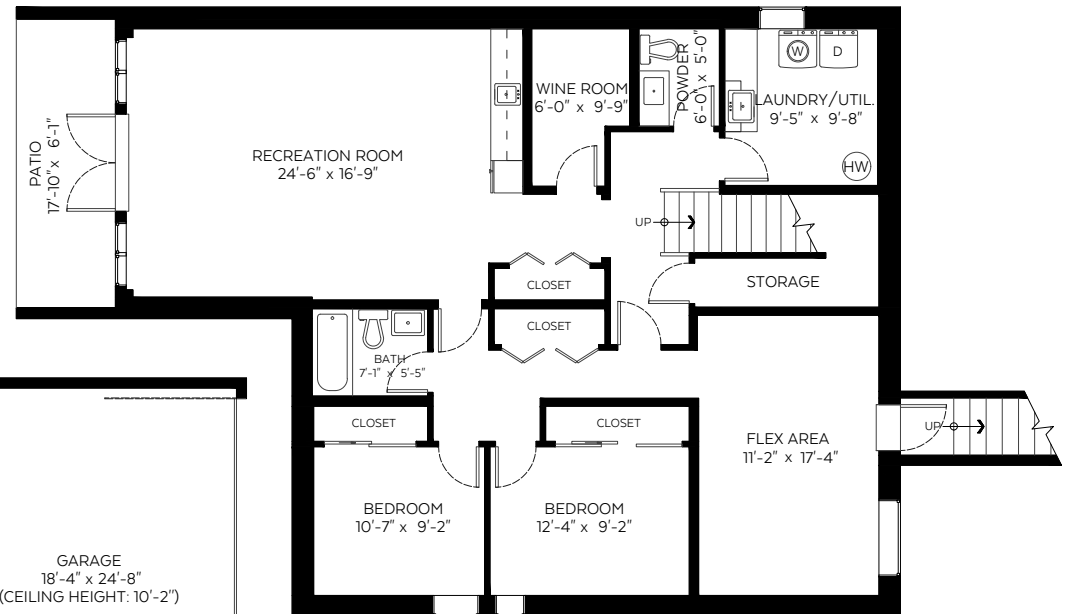


ENGEL & VÖLKERS

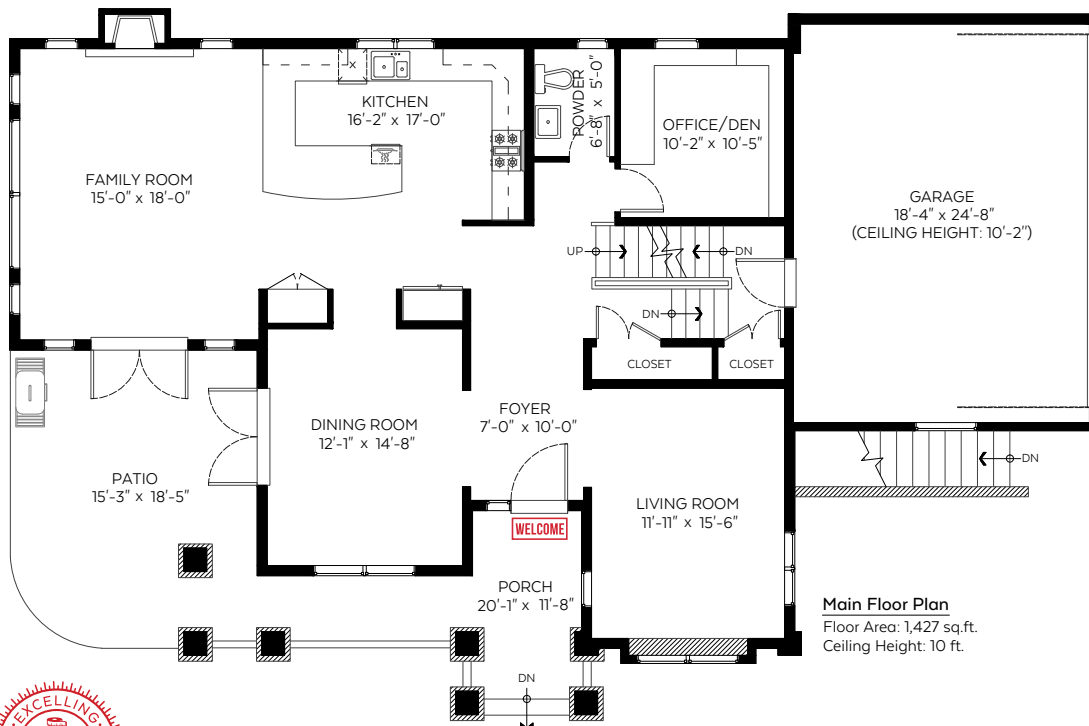
MONIQUE BADUN | KIM CRAIG | VITO LONGO



Upper Floor Plan
Floor Area: 1,110 sq. ft.
Ceiling Peak: 10'-5"



Lower Floor Plan
Floor Area: 1,627 sq. ft.
Ceiling Height: 8'-9"



Main Floor Plan
Floor Area: 1,427 sq. ft.
Ceiling Height: 10 ft.

Main Floor:	1,427 sq. ft.
Upper Floor:	1,110 sq. ft.
Lower Floor:	1,627 sq. ft.
Total:	4,164 sq. ft.

Auxiliary Area

Garage:	488 sq. ft.
Porch/Patio:	395 sq. ft.
Patio:	109 sq. ft.
Balcony:	120 sq. ft.



Valid Until: May 24, 2026

The floor plan is not suitable for architectural/construction and is covered under E&O. © Excelsior Measuring Inc. 2025. All rights reserved for Excelsior Measuring Inc. Users shall not publish and distribute such material (in whole or in part) and/or incorporate it in other works in any form.



NORTH