



ENGEL & VÖLKERS

MONIQUE BADUN | KIM CRAIG | VITO LONGO

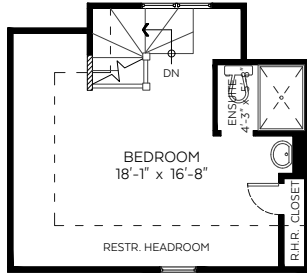
1850 W 33rd Avenue,
Vancouver, B.C.

Main Floor:	1,270 sq.ft.
Upper Floor:	967 sq.ft.
Top Floor:	204 sq.ft.
Lower Floor:	1,109 sq.ft.

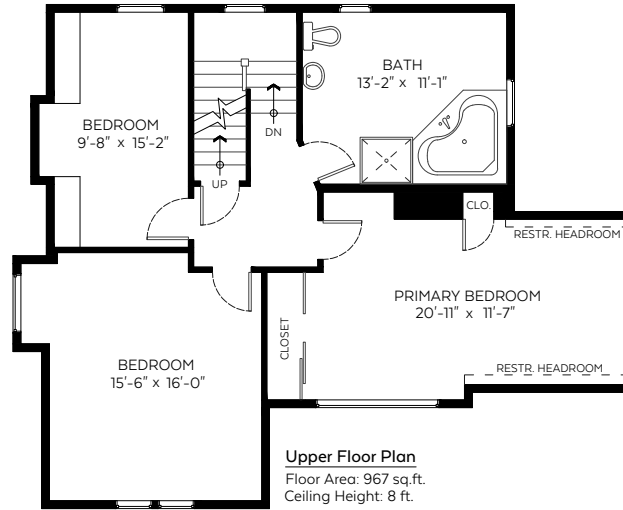
Total:	3,550 sq.ft.
Restr. Headroom:	130 sq.ft.
Grand Total:	3,680 sq.ft.

Auxiliary Area

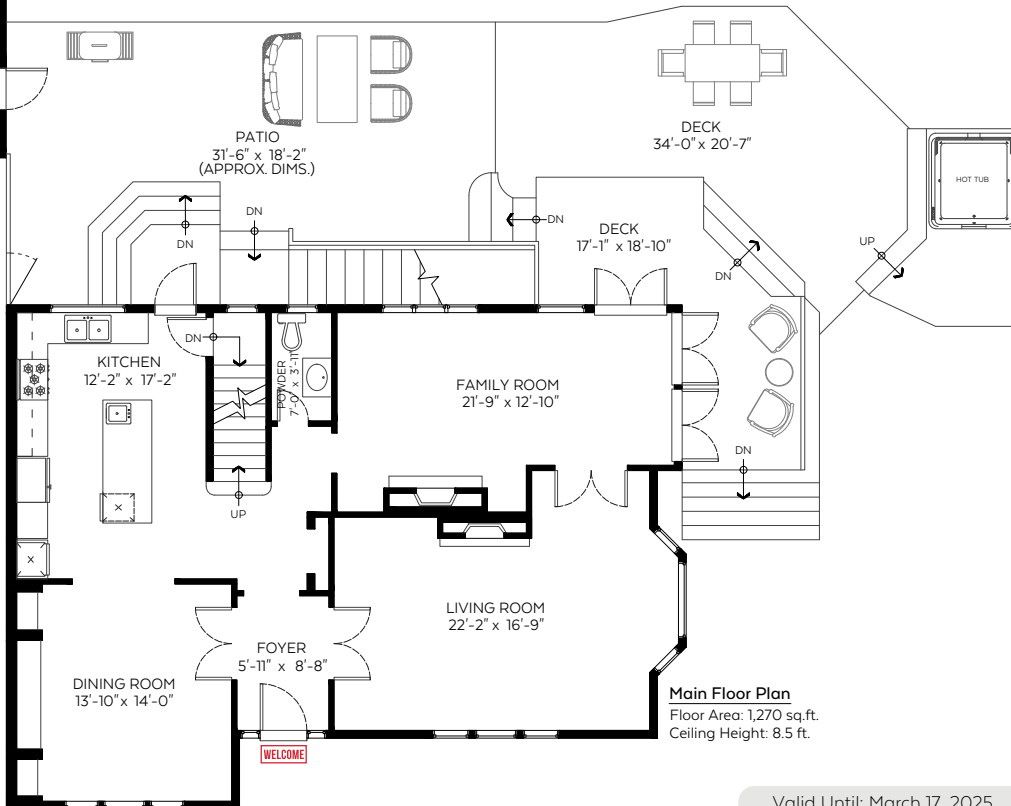
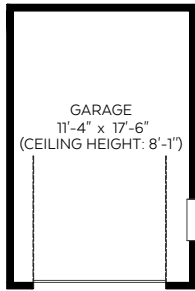
Garage:	223 sq.ft.
Patio:	488 sq.ft.
Deck:	630 sq.ft.



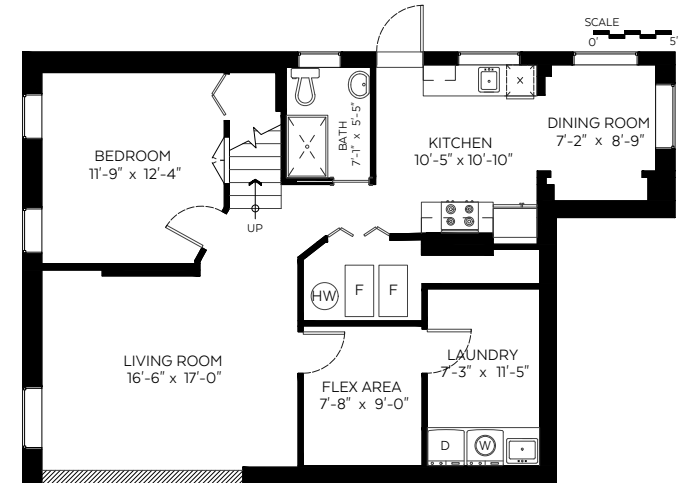
Top Floor Plan
Floor Area: 204 sq.ft.
Ceiling Peak: 10.5 ft.



Upper Floor Plan
Floor Area: 967 sq.ft.
Ceiling Height: 8 ft.



Main Floor Plan
Floor Area: 1,270 sq.ft.
Ceiling Height: 8.5 ft.



Lower Floor Plan
Floor Area: 1,109 sq.ft.
Ceiling Height: 6.5 ft.



Valid Until: March 17, 2025

The floor plan is not suitable for architectural/construction and is covered under E&O. © Excelsior Measuring Inc. 2024. All rights reserved for Excelsior Measuring Inc. Users shall not publish and distribute such material (in whole or in part) and/or incorporate it in other works in any form.



NORTH